



**Pyramix**  
DIGITAL AUDIO WORKSTATION

**Installation Guide**



Pyramix™ Installation Guide V7.x - 3.0  
10th -November-2010

No part of this documentation may be reproduced in any form whatsoever or be stored in any data retrieval system without prior written permission of the copyright owners.

This documentation is supplied on an as-is basis. Information contained within this documentation is subject to change at any time without notice and must not be relied upon.

All company and product names are <sup>™</sup> or Registered Trademarks ® of their respective owners.

Merging Technologies makes no warranties express or implied regarding this software, its quality, performance, merchantability or fitness for a particular purpose. The software is supplied "as is" you, the purchaser, are assuming the entire risk of the results of using this Merging Technologies software.

Merging Technologies manufacturers importers or dealers shall not be liable for any incidental damages including personal injury or any other damages caused by improper use or operation of the hardware or software.

In no circumstances will Merging Technologies, its owners, directors, officers, employees or agents be liable to you for any consequential, incidental or indirect loss or damages including loss of time, loss of business, loss of profits, loss of data or similar resulting from the use of or inability to use the Merging Technologies hardware and or software or for any defect in the hardware software or documentation.

© Copyright Merging Technologies Inc. 2010. All rights reserved

# Contents

<b>1 Introduction</b> _____	<b>6</b>
Thank you! .....	6
Scope.....	6
System Requirements .....	6
<b>2 Lost or stolen Merging Security Keys</b> _____	<b>7</b>
(Sentinel / HASP USB Dongles) .....	7
<b>3 Pyramix Overview</b> _____	<b>7</b>
Pyramix Versions .....	7
Items included with Pyramix:.....	8
Options.....	8
<b>4 Computer Specifications for Pyramix</b> _____	<b>9</b>
<b>5 Installing Pyramix</b> _____	<b>9</b>
Installation Overview: .....	9
<b>5.1 PC Setup</b> _____	<b>10</b>
Display Settings: .....	10
Power Management: .....	10

<b>5.2 Pyramix Software Installation</b>	<b>10</b>
<b>5.3 Authorization System</b>	<b>12</b>
Changing or re-entering a Key.....	13
Evaluation Mode.....	13
Pyramix Software Registration.....	13
Checking Installed Options.....	13
<b>5.4 MassCore™ Installation</b>	<b>14</b>
MassCore™ Installation .....	14
MassCore and Networks .....	15
<b>6 First launch</b>	<b>16</b>
<b>7 Performance Tips</b>	<b>17</b>
<b>8 FAQ and Troubleshooting</b>	<b>18</b>
<b>9 Contacting Merging</b>	<b>18</b>
International Office: .....	18
UK: .....	18
USA:.....	19

# 1 Introduction

## *Thank you!*

Congratulations on your purchase of the Pyramix Digital Audio Workstation.

**Pyramix** is a high-end Digital Audio Workstation (DAW) with the tools you need to record, edit and mix audio for any number of applications including music, broadcast, games and film.

**IMPORTANT!** - The first thing you need to do is register your software to acquire your Pyramix key(s) and to be included in our user support list. Please register at:

<http://www.merging.com/register/>

Please also subscribe to the User Forum at:

<http://www.merging.com/forum/>

## **Scope**

This document is intended to get you up and running with Pyramix and as quickly as possible. For more detailed information about Pyramix, Pyramix and VCube please see the PDF User Guides which are installed with the software.

If you have purchased Pyramix as an integrated (Turnkey) system, the installation information in this guide will be redundant, since these systems come with all hardware and software pre-installed. If you are configuring your own system, please refer to the following instructions.

## **System Requirements**

Wintel platforms tend to increase in number of cores, speed and performance at a tremendous rate. New and faster processors are released almost on a monthly basis.

We maintain a list of up to date PC configurations in the Support Section of our website at:

<http://www.merging.com/pmxcompatibility/>

## 2 Lost or stolen Merging Security Keys

### *(Sentinel / HASP USB Dongles)*

The Merging USB Key carries all the value of your Merging software and the software license authorization to use it. Please ensure you do not lose the USB key as Merging Technologies cannot be held responsible if this is lost or stolen.

If your USB key is stolen or lost then please make a claim on your insurance in the usual way just as you would for any other item you own. Merging will be happy to confirm the details and value of the software license and USB key to your insurance company. If your USB key is lost or stolen and a different user should attempt to register for this key, Merging will notify you and the authorities in your country that an attempt has been made to register this stolen item.

If your USB key should become defective or is broken, please ensure this key is returned to Merging after requesting an RMA (Return Merchandise Authorization). Only after the receipt of this key in the Merging offices will it be determined if it may be exchanged under warranty free-of-charge, or if the damage is out of the warranty scope, in which case only a modest fee to replace it with a new key will be charged (and not the entire value of the software).

## 3 Pyramix Overview

Pyramix Virtual Studio is a powerful and flexible Digital Audio Workstation (DAW) integrating hard disk recording and editing, digital audio mixing, effects processing, machine control, video, and CD-R mastering.

### ***Pyramix Versions***

Your **Pyramix Virtual Studio** will have been supplied in one of three forms:

**Pyramix Native, Pyramix Card and Software Set or Pyramix Turnkey.**

**Pyramix Turnkey** systems are complete, ready to go, rack-mounted PCs with the Pyramix Card and Software Set already installed and properly configured at the Merging Technologies factory. As such, no user installation or configuration is needed. You can connect audio sources and destinations (and sync and TimeCode if appropriate) and launch and run Pyramix immediately.

**Pyramix Card and Software Set** consists of the **Mykerinos** hardware and the **Pyramix** software **ONLY**. You must

provide an appropriate computer platform and software environment in which to install the board and software, and install these yourself. Guidelines for an appropriate Pyramix system environment can be found in the following section.

**Pyramix Native** comes with software and USB Security Key only. You must provide an appropriate computer platform and software environment, and install these yourself. Guidelines for an appropriate Pyramix system environment can be found in the following section.

Future Expansion is of course, possible, whether you start with Turnkey, a Card and Software Set or Native.

**Note:** With the release of Version 7.0 new Pyramix systems are only available in Native or MassCore\* versions. Mykerinos technology will continue to be used for I/O but the DSP engine on the cards is now officially legacy technology. The Tri-media chips have had a long (over 11 years) life but superior technology is now available. Existing Mykerinos based systems are not obsoleted by this change since they can be upgraded by purchasing a MassCore license. For users not ready to upgrade the Mykerinos DSP will continue to work in Version 7 on an “as is” basis.

\* Please check the recommended minimum PC requirements for MassCore at:

<http://www.merging.com/pages/pconfig>

### ***Items included with Pyramix:***

Installation Media with Ovation, Pyramix, VCube and Virtual Transport software.

Sentinel or HASP USB security dongle. The security dongle authorizes both the Pyramix application and any optional features.

This Installation Guide

### ***Options***

#### **Hardware**

- Mykerinos Audio processing board(s) with a wide variety of optional I/O daughterboards
- Sync Board provided with dedicated breakout cable. Enables RS-422, LTC, MIDI and Bi-Phase (option) to control or to be controlled by Pyramix



- GP I/O
- AJA Video card (for systems including both Pyramix and VCube and for Ovation Platinum)

### Software

- A wide variety of software options enabling specific functionalities, plug-ins etc. is available. Please consult your Merging Technologies Sales Partner for full details.

## 4 Computer Specifications for Pyramix

We maintain a list of up to date PC configurations in the Support Section of our website at:

<http://www.merging.com/pmxcompatibility/>

## 5 Installing Pyramix

### *Installation Overview:*

**Note:** If you have purchased hardware options such as Mykerinos, the Sync Board and or an AJA video card for a “PyraCube” system, please install this first following the instructions in the accompanying documentation.

The Pyramix software uses an automated installer wizard which will install all necessary prerequisites. We use a unified installer package containing the current versions of Pyramix, VCube and Ovation. The initial installer screen offers the choice of Pyramix, VCube and Ovation. Choosing **Ovation** will also install Pyramix.

You may exclude the installation of any of the individual components in the wizard, if the device in question is not present on your machine or if you do not intend to use an item, by un-ticking the tick boxes next to the items listed in the wizard.

**Note:** The security dongle must be in place and the security keys entered before attempting to launch VCube

## 5.1 PC Setup

**A 32-bit version of Windows 7 Professional or Vista business SP2 or Windows XP SP3 is required**

### **Media drives**

Media hard disk drives should be 7200 rpm 24/7 types formatted with 64kB sectors. For high track-count/high resolution audio projects and or multiple high definition video streams RAID systems may be required. Please contact your Merging Sales Partner for more information.

### **Display Settings:**

Pyramix requires a minimum display resolution of 1024x768 which **MUST** be set to small fonts mode.

### **Power Management:**

**Note:** We recommend setting the PC to an **Always On** Power management scheme. (**Start > Settings > Control Panel** double-click **Power Options**. Choose **Always On** from the **Power Schemes** drop down list.) This allows the monitor to be turned off by the system but disables hard-disk spin down and Standby.

### **Other Applications:**

Pyramix works best when there are no other unnecessary applications or services running.

## 5.2 Pyramix Software Installation

### **Steps for installing on a machine with an existing version of Pyramix / MassCore**

**Note: It is essential that previous versions of Pyramix and the MassCore engine are removed prior to installation of V7**  
Prior to installing the Pyramix 7.0 version, we recommend that you back up your Projects and save your settings, keyboard shortcuts, templates, etc..

### **Remove Pyramix**

1. Go to Windows Control Panel
2. Select "Add or Remove Programs" (XP) / "Programs and Features" (Vista & Windows 7)

3. Remove the installed Pyramix version (Pyramix 5.X or 6.2.X versions)
4. Reboot the system after the uninstall completes

MassCore users must also remove the existing MassCore runtime:

### **Remove MassCore**

1. From the Control Panel access the Windows “Add or Remove Programs” (XP) / “Programs and Features” (Vista & Windows 7)
2. Select “Interval Zero RTX runtime” and Remove it
3. Reboot the system after the uninstall completes

### ***Installing Pyramix***

**Note:** You must have full Administrator Access to install Pyramix. Under Windows Vista & 7 it is recommended but not mandatory that the user has full administration rights (User Accounts->account type), in order to run Pyramix (or Vcube or Ovation).

**Note:** The Microsoft Visual C++ 2008 SP1 Redistributable Package is a prerequisite for installation. If not already installed the installer will prompt you to install it as part of the Pyramix install.

**N.B.** Windows XP must be upgraded to SP3 before attempting to install Pyramix 7

1. Insert the Merging Technologies USB memory stick or installation CD/DVD, as applicable, into a suitable socket or drive.
2. With optical media, unless you have disabled the function, the installer will run automatically.
3. If necessary locate and run the installer manually.
4. Choose **Pyramix** when prompted
5. At the next screen, de-select any items you do not require.
6. Override any warnings about uncertified drivers during the installation process.
7. Plug in the security USB dongle.
8. Enter the optional keys in MT Security Settings, if necessary.

9. Restart the PC.
10. If you have purchased VCube as well and are building a “PyraCube” please run the installer again and choose **VCube**
11. Launch Pyramix.

**Note:** If the installation appears to freeze for a long period please check that the Driver Signing warning dialog is not hidden behind another Window. Installation will not continue until you click **OK** in this dialog.

**Note:** When an AJA video card is present the drivers are installed automatically when the machine is re-booted after a fresh VCube software install. You should ALWAYS use the Merging Technologies versions of the AJA drivers and not those included with an AJA retail board or downloadable from the AJA website (Xena or Kona models) to avoid conflicting driver versions with VCube.

**WARNING:** Certain computers do not properly shut down despite the reboot command issued by the installer but only perform a log off. In this case, please activate a full shut down manually.

## 5.3 Authorization System

The Pyramix software and its various software options are protected by an authorization key mechanism which uses a unique registration key number generated by Merging Technologies. Based on purchased software components, this key is unique to your Sentinel or HASP USB dongle serial number or Mykerinos board serial number, your Company Name and your User name. Once you have registered your software you will be provided with this Key or Keys (depending on the options chosen).

When you receive your Pyramix Package you should also receive either an email from your Merging technologies Sales Partner or a printed copy of the email containing your security setting details. If you did not receive this key, have lost it or would like to change the user and/or company name, please contact your Merging Sales Partner with your Mykerinos or USB dongle serial #, your User Name, your Company Name and the list of purchased software components. Usually, a key can be issued within one business day, after the verification of your personal data has been completed.

### **Entering Your Security Key(s)**

After the Pyramix installation process you will be prompted to enter your Authorization Key. If you click **Yes** the **MT Security Settings** dialog will be launched automatically, allowing the Key or Keys to be entered immediately. If you choose not to enter your Key at this point you can do so later by choosing one of the following procedures:

1. Double-click the file **YourPersonalKeyXXXXX.mtk**. This is attached to the email containing your Key(s).
2. Open the MT Security Settings Control Panel (Windows Task Bar **Start > Control Panel > MT Security Settings**), click the

Import Key button and browse for your Key file called **YourPersonalKeyXXXXX.mtk**

3. Open the MT Security Settings Control Panel (as above), in the Registration section select the board number corresponding to the serial number for your Keys or HASP Key for a dongle, click the **Enter Key** button and type your **User Name**, **Company Name** and **Key** then click **OK**. Repeat this step for each Keys listed in the email.

### ***Changing or re-entering a Key***

Should you need to subsequently change or re-enter a Key, follow the appropriate option above.

The key system is “smart”. Only one key or set of keys is required regardless of the number of boards in a system. Any card (or security dongle) can hold this key set as the authorization is processed based on a “Logical OR” of all keys present on any and all Mykerinos boards or dongle. Of course, this Logical OR will only process keys with identical **User Name** and **Company Name** to the one entered in the key enabling window.

### ***Evaluation Mode***

If Pyramix is started without a valid registration key, the software will recognize that no valid key is available and will start in “evaluation” mode, which only allows for basic operation.

### ***Pyramix Software Registration***

We strongly recommend you register your Pyramix software immediately to ensure access to the latest software downloads and support at:

<http://www.merging.com/register/>

### ***Checking Installed Options***

At any time, you may check the software options enabled for your system from the MT Security Settings control panel: **Start > Control Panel > MT Security Settings**

## 5.4 MassCore™ Installation



### Conditions

- You **MUST** be logged in as an Administrator to install MassCore™.

**Note:** Windows Vista & 7: It is recommended but not mandatory that the user has full administration rights (User Accounts > account type), in order to run Pyramix with Mass-Core™ (or Vcube or Ovation).

- You must have at least one Mykerinos board in your system.

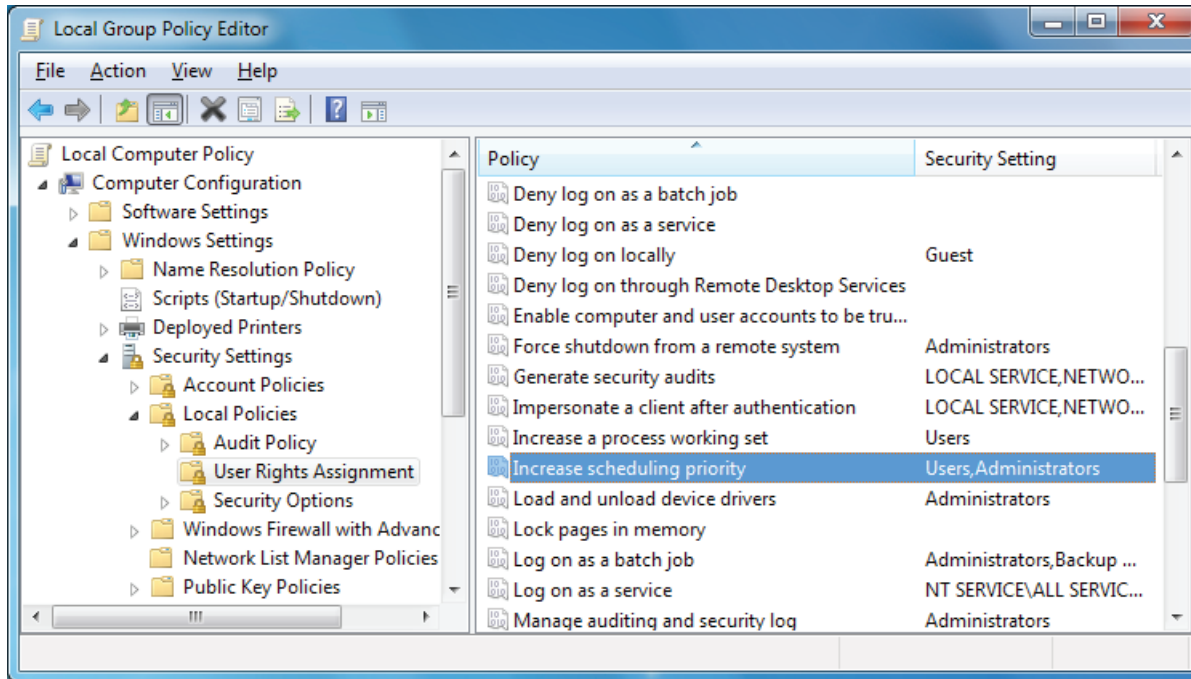
**Note:** If for any reason you have yet to receive your Authorisation Keys, please contact your Merging Technologies Sales Partner.

### **MassCore™ Installation**

1. Install Pyramix
2. Restart your system after the install
3. Enter Your Key(s) in MT Security Panel (make sure you have a valid MassCore key)
4. In the MT Security Panel select the **MassCore** Tab
5. Press the **Install MassCore RunTime** button (will only be enabled if the MassCore Base Key is present)
6. Restart System after install
7. Launch the VS3 Control Panel
8. In the Application Section select **Pyramix** from the drop-down menu.
9. In the Platform section select **MassCore**
10. We recommend by default the use of Low latency mode (Ultra low latency & Extra low latency are available only for Mykerinos-X users)
11. Click on **OK** and opt to save the MassCore configuration if asked to do so.

## MassCore and Networks

For satisfactory operation over a network, you must add the User Group to which the User belongs to “Increase Scheduling priority policy” with the help of gpedit.msc (Start > Run and type or paste gpedit.msc) This is the same for Windows 7, Vista or XP. Whether on a network or locally on the machine, Administrator privileges are required.



## 6 First launch

**Important!** After installation has been completed, please reboot the PC before attempting to launch Pyramix. Then open the VS3 control panel application.

**Start > Programs > Pyramix > VS3 control panel**

The default Tab Pane is **Configuration**.

### **For Pyramix systems with a single Mykerinos board:**

Leave all default selections as they are, making sure the **On Bus** check box for your Mykerinos card is indeed checked then save and exit the VS3 control panel application.

### **For Pyramix systems with a multiboard configuration:**

- Make sure there is a check mark in the **On Bus** boxes for each board installed.
- Check that the **Application** combo box is showing Pyramix. If not, select **Pyramix** from the list.
- Select **XDTDM** from the **Buses Mode** combo box
- Select which board is to provide an external Video/TC reference with the radio buttons next to the board icons.

**Note:** In a multiboard system with both PCI and PCIe Mykerinos cards Merging recommend selecting a PCIe card in order to conserve PCI bus bandwidth.

- For now, leave the default DSP Allocation settings as they are.
- When the VS3 panel **Do you want to save routing?** dialog box appears, click on **OK**
- the VS3 control panel will close

### **For Pyramix MassCore Systems**

- Choose **MassCore** from the **Platform** drop-down list.



- Follow the appropriate steps above, depending on whether you have one or multiple Mykerinos cards installed.
- For now, leave all other settings at the default value.

### Launch Pyramix

Double-click on the Pyramix desktop icon to launch Pyramix. The User Manual is available from within Pyramix under the **Help** menu and can be accessed by pressing F1, or online at [merging.com](http://merging.com)

## 7 Performance Tips

- Windows 7 users should disable AERO themes for maximum performance.
- Windows Indexing should be disabled on any and all DATA hard drives, other than the boot drive, for maximum performance.

## 8 FAQ and Troubleshooting

Please visit regularly:

<http://www.merging.com/faq>

for the latest Troubleshooting Guides and FAQs.

## 9 Contacting Merging

### *International Office:*

**Merging Technologies S.A.**

**Le Verney 4**

**CH-1070 Puidoux**

**Switzerland**

**Phone: +41 21 946 0444**

**Fax: +41 21 946 0445**

### *UK:*

**Merging UK**

**St Clare House, St Clare Business Park**

**Holly Road, Hampton Hill**

**Middx UK**

**TW12 1QQ**

**Phone: +44 (0) 20 894 16547**

**Fax: +44 (0) 870 1231747**

**USA:**

**Merging USA (Independent Audio)**

**43 Deerfield Road**

**Portland,**

**ME 04101-1805**

**United States of America**

**Phone: +1 (207) 773 2424**

**Fax: +1 (207) 773 2422**

**For all documentation inquiries or suggestions for improvement:**

<http://www.merging.com/contact>

