



Pyramix
DIGITAL AUDIO WORKSTATION

Virtual Transport
NETWORKED SYNCHRONIZATION SYSTEM



Installation

Please consult the **Ramses Upgrade 1.04a** guide under <http://www.merging.com/ramses/download/>
Make sure that there will be no electrical cuts during your upgrade; if not sure please connect Ramses onto a UPS.

Updates

Please check our Web site <http://www.merging.com> periodically for information, patches and updates.

Please install following software versions (or later) to function properly, former versions will partly or totally malfunction.

Thank you for your feedback which is very useful to us to develop and improve the best products for your needs.

The Merging Technologies team

Install following versions, you can download the Ramses updates under <http://www.merging.com/ramses/download/> For the latest Pyramix download please login under <http://www.merging.com/download/> or register under the link on the page.

- Pyramix version - **Pyramix Virtual Studio V6.0.15 Sp1Build457**
- Ramses firmware - **Consolefirm 1.5.2.88 2008.04.17 .bin**
- Ramses consolesoft - **Consolesoft 2.0.0.645 2008.07.08 rms .zip**

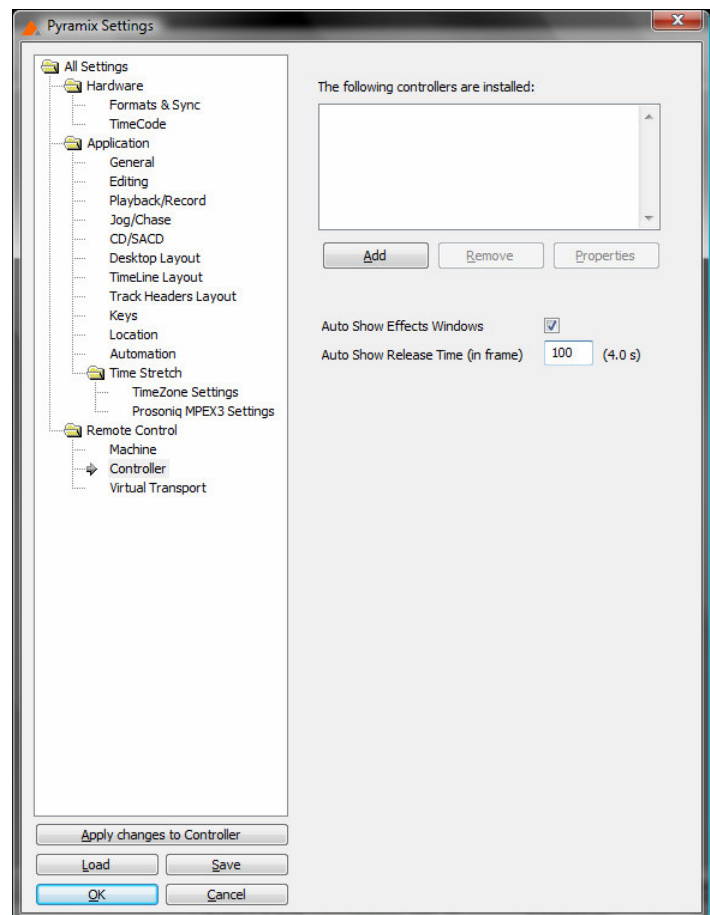
Options

- Edit bay key set - **Consolesoft Set9 2008.03.19 1400.rms**

CONSOLESOFT 2.0.0645 2008.07.08

COMMENTS

- Enable the auto show effects window in Pyramix general settings/controller, as shown to be able to automatically see the plug-in on which you change parameter on your Pyramix. For the time being you have to disable “auto show Plug-in” option in Personal page in Ramses to make this function fully trouble free.



IMPROVEMENTS

- Remove Stems from the SYSTEM menu
- Unity Pan function unity + wiggle pan encoder - Reset pan / stereo AND 5.1- by wiggling the pan while holding unity
- Inversion of active buttons and value/function on active screen – this helps to better read the value of the encoder
- New Plug-in paradigm complete for Pyramix V 6.0 SP1 – All Merging AND major VST plug-ins are now controlled from the active screen of Ramses. Go to a channel with inserted VST plug-ins, press plug-ins on Active screen then open and you will be able to remote this very plug-in.
- Viewing of the plug-in has been improved – go to general settings/controller in Pyramix, then choose how much time the plug-in shall remain open on Pyramix screen after the last action has been performed on Ramses

- VST plug-in automation fully supported.
- Rearrangement of the system menu page under different section for clearer understanding.
- Ramses template N° 14 named "Pyramix" is saved within the *.pmx file. When recalling this very project all groups, ergonomic spreads etc will be available.
- While holding "even more" button over the channel page on the active screen, all parameters with their names will show up as an overlay.
- A transport page (machine on the upper active panel) has been added to be able to remote directly 9 pin devices and manage LTC chase from Ramses.

TIPS AND TRICKS (to be updated within the User Manual)

- Choice of inject range in the configuration menu, when "range" selected than holding inject simultaneously between two channels will automatically recall all channels in between starting from the left inject point.
- Mute clear LOGICAL WORKAROUND - All Mute clear is available when holding all in expert panel and pressing mute

BUG FIXES

- [MTR-62] – Fixed - Bad header error on Ramses when opening VST plug-in - System buttons lit on Ramses after some time of usage. Mainly after opening a VST plug-in (auto show plug-in mode). When pressing System = Pyramix crash
- [MTR-104] – Fixed - Ramses: The "Controlled" option text has a tendency to disappear - The "Controlled" text has a tendency to disappear under the plug-in if selecting it in the Active Screen, the "Controlled" text disappear until we refresh it e.g. by selecting another strip and re-selecting the previous one.
- [MTR-78] – Fixed - The latest Ramses Firmware V 1.5.2.76 makes the ARC behave strangely - Metering of Channel 1-12, 25-36 work but 13-24 , 37-48 don't, in Peak, VU or Fader mode. Also in Peak or VU channel 1 and 13 are both on metering 1, channel 2 and 14 are both on metering 2
- [MTR-90] – Fixed - Scene mode enables itself (digits over transport) - Scene mode enables itself(Sc or Lc on the transport digits)
- [MTR-52]- Fixed - Choices of the EQ and Dyn dedicated controls
- Some plug-ins like the EQx could be named Bus tools in the Ramses Plug-in Active Screen if inserted on a Bus.
- Fixed - Strip Tools randomly opens if touching the Ramses Faders
- Fixed - The plug-ins dB parameters control from the plug-ins page doesn't behave correctly. i.e the output gain is settable from 0 to +48 dB instead of -48 to +48 dB. It is no longer possible to set a negative value.