



Ramses MSC

Console Control System

ARC

installation guide



    more advanced Direct Stream Digital Digital Extreme Definition

 **MERGING**
MERGING TECHNOLOGIES

No part of this documentation may be reproduced in any form whatsoever or be stored in any data retrieval system without prior written permission of the copyright owners.

This documentation is supplied on an as-is basis. Information contained within this documentation is subject to change at any time without notice and must not be relied upon.

All company and product names are TM or Registered Trademarks © of their respective owners.

Merging Technologies manufacturers importers or dealers shall not be liable for any incidental damages including personal injury or any other damages caused by improper use or operation of the hardware or software.

Merging Technologies makes no warranties express or implied regarding this software, its quality, performance, merchantability or fitness for a particular purpose. The software is supplied "as is" you, the purchaser, are assuming the entire risk of the results of using this Merging Technologies software.

In no circumstances will Merging Technologies, its owners, directors, officers, employees or agents be liable to you for any consequential, incidental or indirect loss or damages including loss of time, loss of business, loss of profits, loss of data or similar resulting from the use of or inability to use the Merging Technologies hardware and or software or for any defect in the hardware software or documentation.

© Copyright Merging Technologies Inc. 2007. All rights reserved

Ramses MSC Console

ARC Installation Guide : Contents

Introduction 4
 Scope 4
Important - Before You Begin 4
ARC Installation 5
 Fitting The ARC 8
 Attaching the ARC 8
 Connect Cables 9
 Fit the Rear ARC Support Covers 9

Ramses MSC Console ARC Installation Guide

For

Ramses MSC Console

MSC 8/16/24

PRELIMINARY

Document number: 10-01

Date: 15-October-2007

Introduction

Congratulations! You have just purchased the world's most ergonomically advanced console. Your **Ramses MSC Console** should provide you with many years of trouble free operation, however it is important to follow these instructions carefully to install the **ARC**.

Scope

This document contains instructions for the safe installation of an **ARC** to your **Ramses MSC Console**.

If you experience any problems or need any assistance please contact your local distributor or you can contact Merging Technology technical support in Switzerland via telephone on: +41 21 946 04 44 or via email on:

support@merging.com

Important - Before You Begin

The **Ramses MSC Console** should be shut down before installing the **ARC** assembly. Failure to do this could result in damage to the console or personal injury. Please ensure you follow these directions carefully to ensure that you do not experience any problems.

ARC Installation

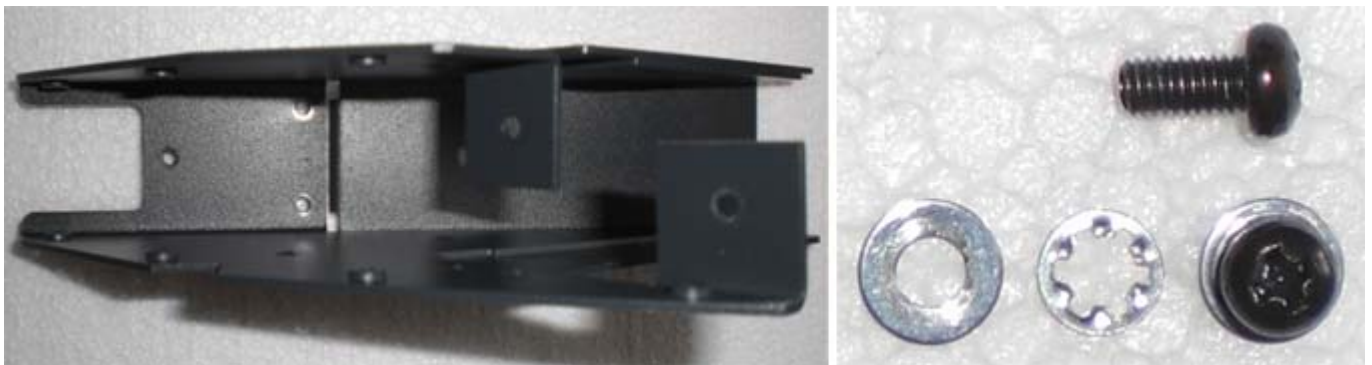
Note: Ensure the **Ramses MSC** is **NOT** powered on before installing the **ARC**.

The **ARC** support pillars are supplied packed separately. Please attach them using the following procedure before fitting the **ARC** to the **Ramses MSC**.

Place the **ARC** face down on a protective and secure surface. E.g. a blanket on a level and adequately sized horizontal work surface.



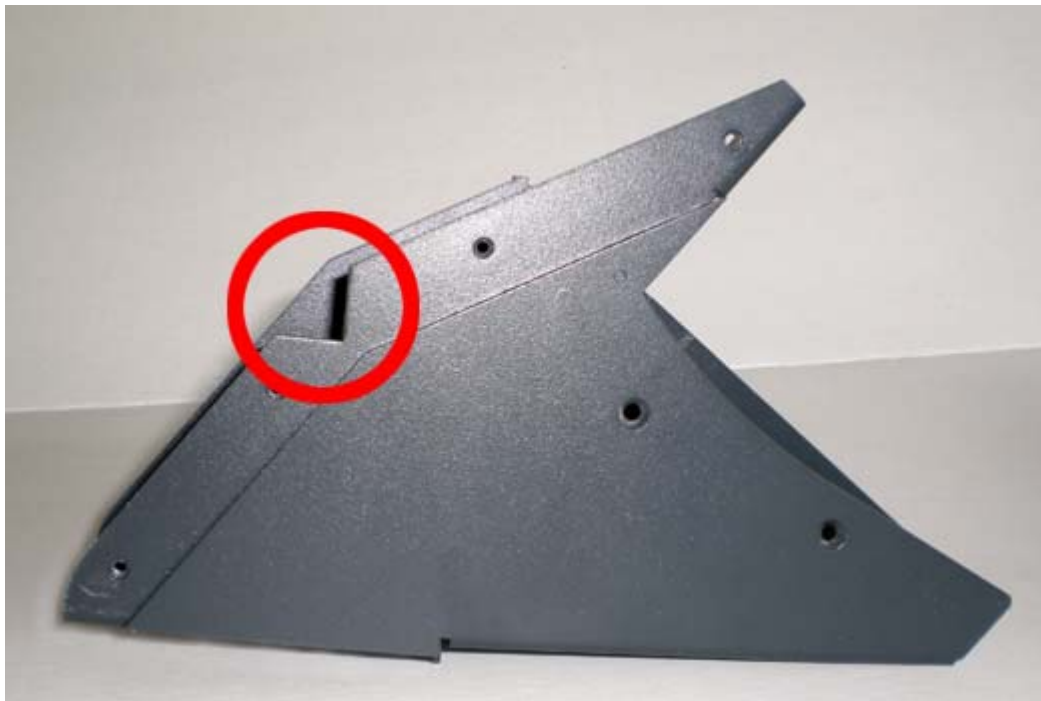
Locate the two support columns and the six M3 X 6mm screws, washers and star washers.



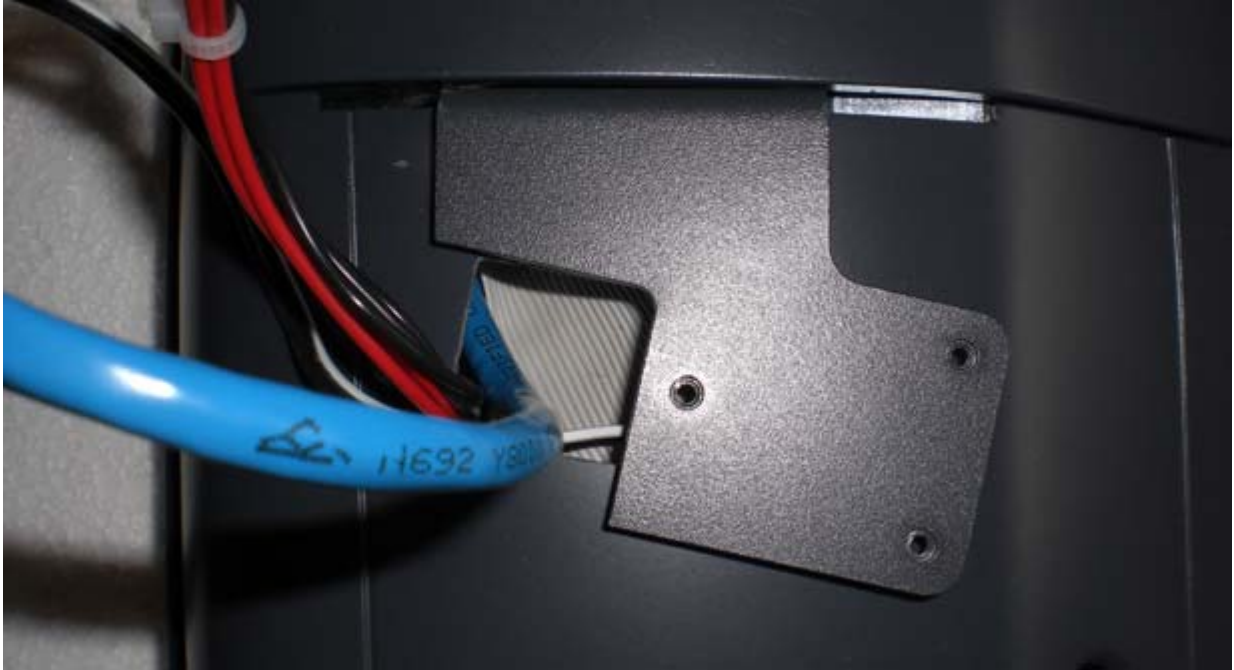
Note: The support brackets are handed. I.e. there is a left and a right version:



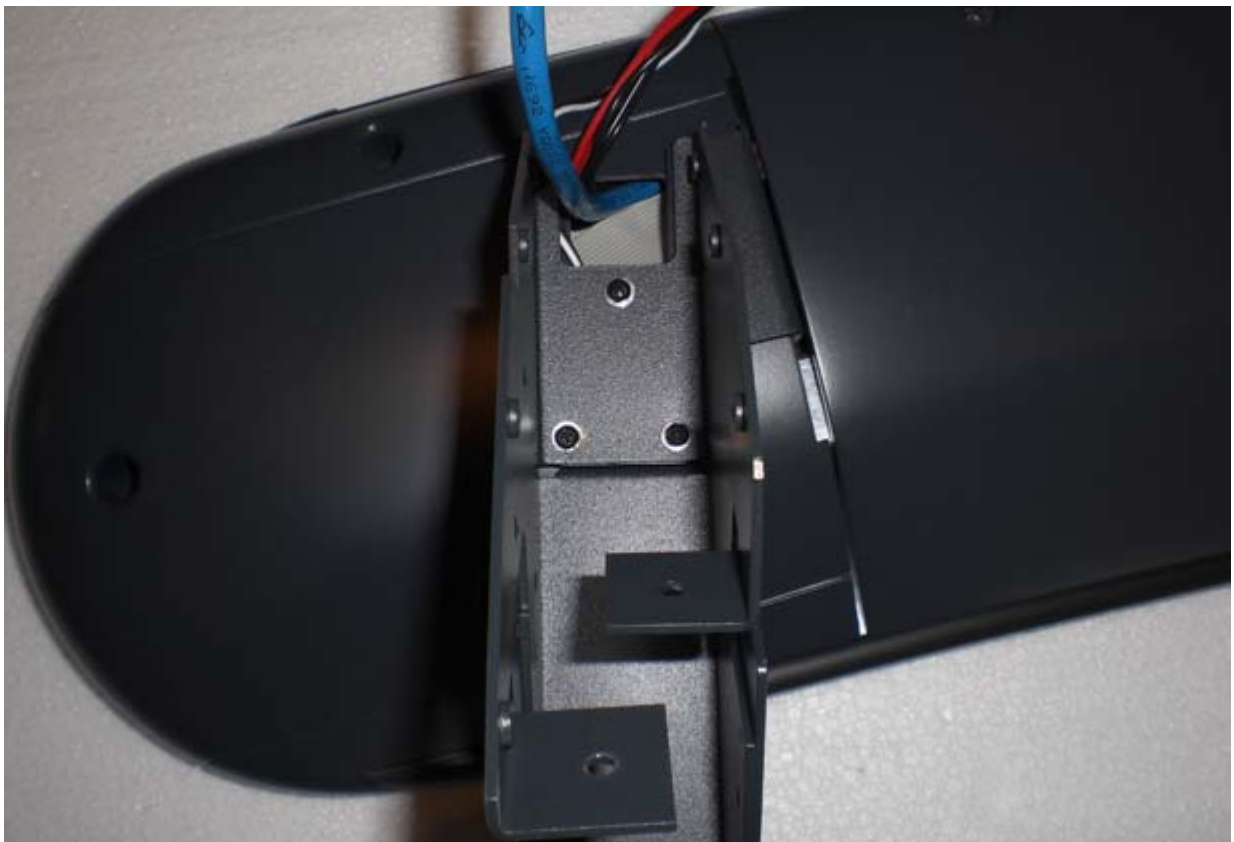
There are several identifying features but perhaps the most obvious is to check that the sides with the longest right-angle bracket with the “V” cutout go to the outside of the ARC.



Dress the cables so that they will run through the gap in the support.



Attach each support using three M3 X 6mm screws, washers and star washers. Be careful to ensure that the cables are not pinched under the support.



With both supports securely fastened you can now proceed with fitting the **ARC** to **Ramses MSC**.

Fitting The ARC

Note: IMPORTANT This step requires 2 people to ensure the **ARC** and **Ramses MSC** are not damaged during positioning.

Grip each of the **ARC** supports (1 person each) and align the **ARC** with the console as shown in the image below. Take care not to scratch any of the painted surfaces and **DO NOT** lift the **ARC** by the plastic moldings as damage may occur.

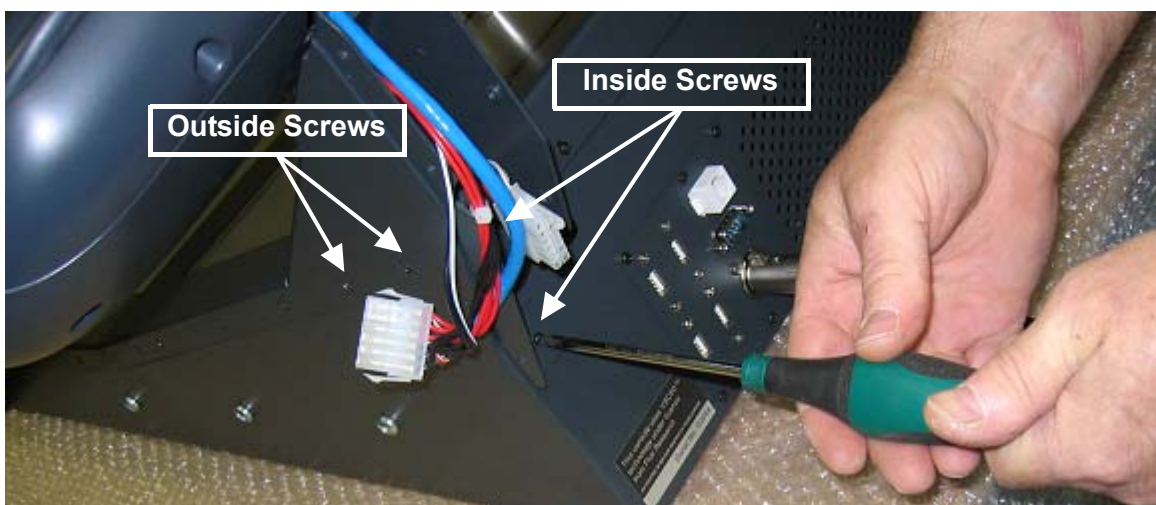


Once the **ARC** is aligned, carefully lower it into position and continue to support it while the fixing screws are inserted and tightened.

Attaching the ARC

Note: Ensure a second person is supporting the ARC during the following steps.

Begin by loosely fitting 2 **M3 X 6** PAN head screws inside each the **ARC** support. Now add the 2 **MS** CSk head screws on the outside of each **ARC** support. The location of all these screws is shown in the image below.

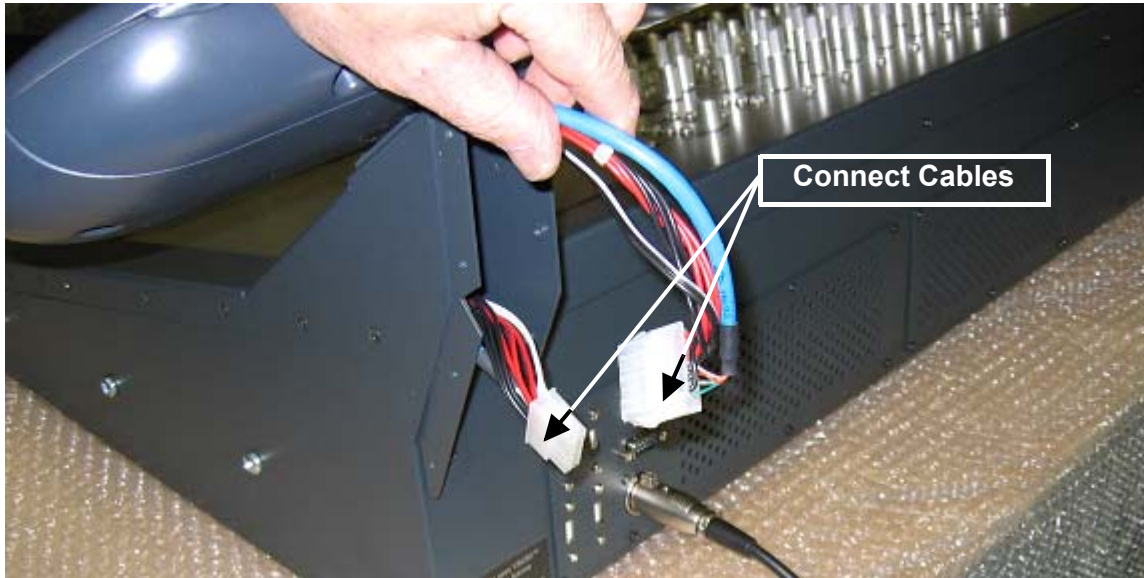


When all the screws are in place, tighten each of them. Repeat this step for both sides of the console.

Connect Cables

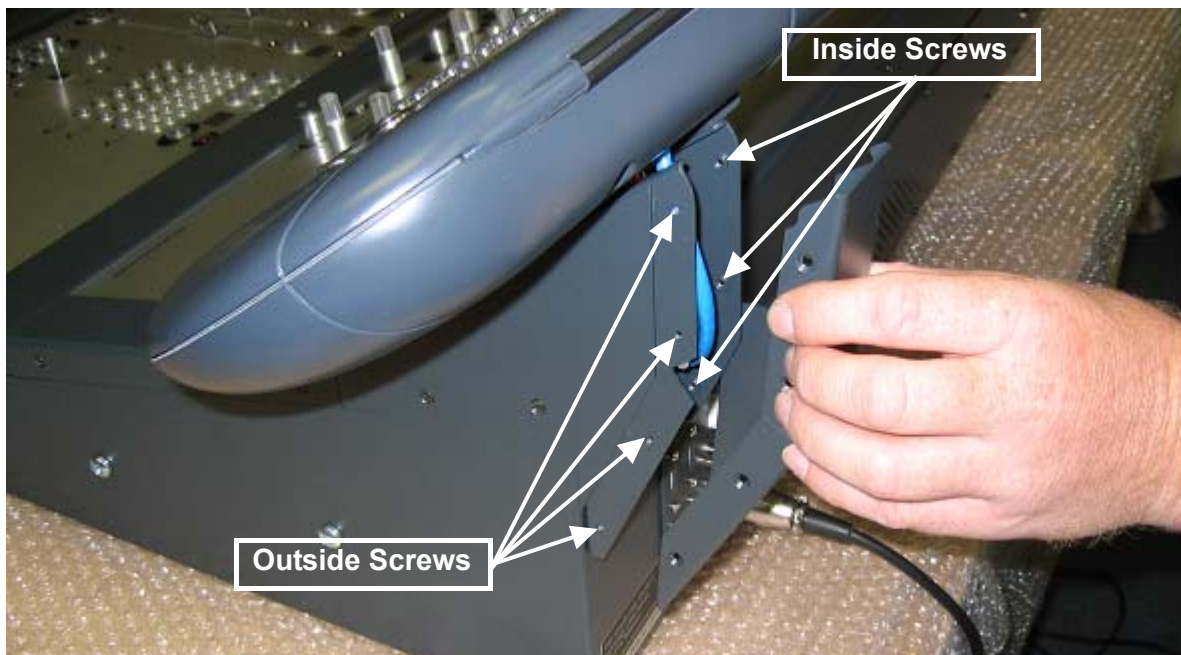
Locate the **ARC** cables housed within each side of the **Ramses MSC** and bring them through the **ARC** support.

The connectors will only fit one way. Examine them and line them up accordingly. Carefully connect the cables (on both sides of the console) as shown in the image below. Ensure the locking tab on the connectors is secure before tucking the cables into the supports.



Fit the Rear ARC Support Covers

Carefully position each cover and align the screwholes. Loosely fit all **4 outside** and **3 inside** screws for each **ARC** support cover. These screws are all **M3 x 6** CSK head. The screw locations are identified in the image below.



When all the screws are inserted, tighten each of them.