

Ovation
MEDIA SERVER & SEQUENCER

Installation Guide



No part of this documentation may be reproduced in any form whatsoever or be stored in any data retrieval system without prior written permission of the copyright owners.

This documentation is supplied on an as-is basis. Information contained within this documentation is subject to change at any time without notice and must not be relied upon.

All company and product names are [™] or Registered Trademarks [®] of their respective owners. Windows 7, Windows Vista and Windows XP are trademarks of Microsoft Corporation.

Merging Technologies makes no warranties express or implied regarding this software, its quality, performance, merchantability or fitness for a particular purpose. The software is supplied "as is" you, the purchaser, are assuming the entire risk of the results of using this Merging Technologies software.

In no circumstances will Merging Technologies, its owners, directors, officers, employees or agents be liable to you for any consequential, incidental or indirect loss or damages including loss of time, loss of business, loss of profits, loss of data or similar resulting from the use of or inability to use the Merging Technologies hardware and or software or for any defect in the hardware software or documentation.

© Copyright Merging Technologies Inc. 2014. All rights reserved



Installation Guide

IMPORTANT NOTICE:

Please read the following information very carefully before attempting any installation. Failure to comply with the precise instructions may result in damage to your Merging hardware. Please read this entire section of the manual carefully before installation.

STATIC DANGER NOTICE:

Please note that the Mykerinos and Mykerinos-X boards contain delicate electronic components that can be damaged or even destroyed when exposed to static electricity. Take all necessary precautions not to discharge static electricity when touching any of the Mykerinos components.

INFORMATION FOR THE USER:

Mykerinos, Mykerinos-X and their daughter cards comply with the following specifications:

EMC Emissions

EN 55022 : 1994 /A1 : 1995 /A2 : 1997 Class A ITE emissions requirements (EU)

FCC 47 CFR Part 15 Class A emissions requirements (USA)

EMC Immunity

EN 50082-1: 1992 EMC residential, commercial and light industrial generic immunity standard.

FCC Notice

This product has been tested and found to comply with the limits for a Class A digital device, pursuant to Part 15 of the FCC rules. Operation is subject to the following two conditions: (1) This device may not cause harmful interference, and (2) This device must accept any interference received, including interference that may cause undesired operation.

These limits are designed for providing reasonable protection against harmful interference in a residential installation. This equipment generates, uses and can radiate radio frequency energy and, if not installed and used in accordance with the instructions contained in this manual, may cause harmful interference to radio and television communications. However,

there is no guarantee that interference will not occur in a particular installation.

Note: Connecting this device to peripheral devices that do not comply with CLASS A requirements or using an unshielded peripheral data cable could also result in harmful interference to radio or television reception. The user is cautioned that any changes or modifications not expressly approved by the party responsible for compliance could void the user's authority to operate this equipment. To ensure that the use of this product does not contribute to interference, it is necessary to use shielded I/O cables.

CE Notice

Such a  marking is indicative that this system's devices meet the following applicable technical standards:

- EN 55022 – "Information Technology Equipment - Radio disturbance characteristics Limits and methods of measurement"
- EN 50082-1: 1992 – "Electromagnetic compatibility – Generic immunity standard Part 1: Residential, commercial, and light industry"



This product is classified for use in a typical Class A commercial environment, and is not designed or intended for use in other EMC environments. The user of this product is obliged for proper use and installation of the product and for taking all steps necessary to remove sources of interference to telecommunications or other devices.

Hardware Warranty Information

This product is warranted to be free of defects in materials and workmanship for a period of one year from the date of purchase. Merging Technologies, Inc. extends this Limited Warranty to the original purchaser.

In the event of a defect or failure to conform to this Limited warranty, Merging Technologies, Inc. will repair or replace the product without charge within sixty (60) days. In order to make a claim under this limited warranty, the purchaser must notify Merging Technologies, Inc. or their representative in writing, of the product failure. In this limited warranty the customer must upon Merging Technologies, Inc. request, return the product to the place of purchase, or other local designation, for the necessary repairs to be performed. If the consumer is not satisfied with the repair, Merging Technologies, Inc. will have the option to either attempt a further repair, or refund the purchase price.

This warranty does not cover: (1) Products which have been subject to misuse, abuse, accident, physical damage, neglect, exposure to fire, water or excessive changes in the climate or temperature, or operation outside maximum rating. (2) Products on which warranty stickers or product serial numbers have been removed altered or rendered illegible. (3) The cost of installations, removal or reinstallation. (4) Damages caused to any other products.

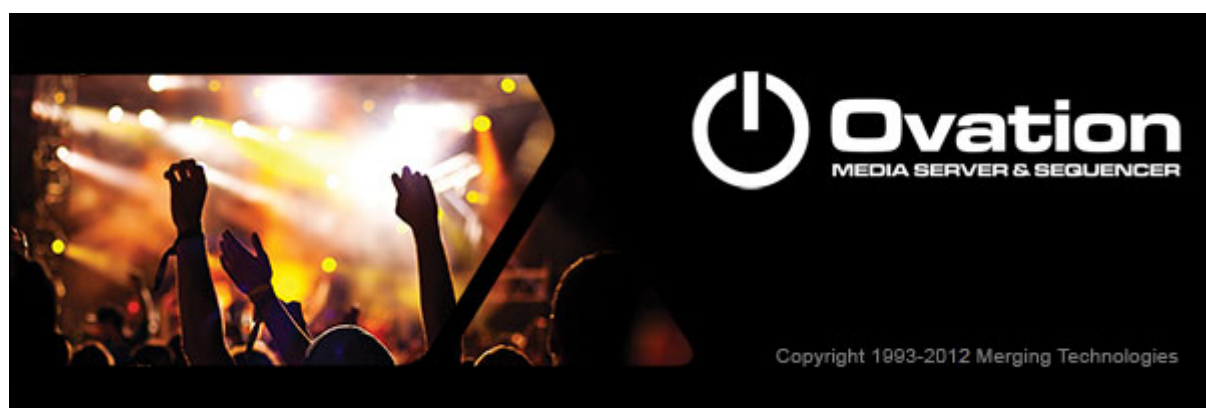


Installation Guide : Contents

1 Introduction	8
Thank you!	8
Scope	8
2 Ovation Versions - Compatibility and Installation Steps	9
3 Ovation Overview	11
4 For Users Performing Upgrades	13
5 System Requirements	14
Mykerinos Systems	14
Ovation MassCore Systems	14
Ovation Native	14
MassCore and Networks	15
6 PC Setup	18
Motherboard Drivers and Utilities	18
BIOS Settings	18
Display Settings	18
Power Management	18
Aero graphics	18
Indexing	18
Other Applications	18
Recommended options	19
7 Mykerinos Installation	20
Mykerinos Card Installation	20
8 Ovation Software Installation	21
Installation Overview:	21
Driver Signing	21
Flux VS3/V3 plug-ins	21
Running the Installer	22
9 Ovation Software Registration	23
10 MassCore Installation	25
64 Bit MassCore Notes	26
11 MassCore - Ravenna	28
Installing the Merging Technologies NET-MSC-GBEX1 PCIe Ethernet Controller Card	28
Troubleshooting	31
12 First launch	32
13 Troubleshooting	34
14 Lost or Stolen Merging Technologies Security Keys	34
15 Contacting Merging	35
International Office:	35
UK:	35
USA:	35



Installation Guide



Document: Ovation™ Installation Guide v5.x - rev16

Date: 14th May 2014



1 Introduction

Thank you!

Congratulations on your purchase of the **Ovation** Media Server & Sequencer. Ovation is a ground-breaking Media Server and Sequencer with the tools you need to produce and run shows in many spheres of activity. For example:

- Theatres
- Theme Parks
- Museums
- TV Game Shows
- Trade Shows
- AV Presentations
- Radio stations
- Retail Outlets
- Film Festivals

are just a few of the possible applications for Ovation.

Note: IMPORTANT! - The first thing you need to do is register your software to acquire your Ovation key(s) and to be included in our user support list.

<http://www.merging.com/register/>

Please also subscribe to the User Forum at:

<http://www.merging.com/forum/>

Scope

This document is intended to get you up and running with Ovation and as quickly as possible. For more detailed information about Ovation, Pyramix and VCube please see the PDF User Guides which are installed with the software.

Important! If you are installing an upgrade to Ovation please read: **For Users Performing Upgrades on page 13** first.

If you have purchased Ovation as an integrated (Turnkey) system, the installation information in this guide will be redundant, since these systems come with all hardware and software pre-installed. If you are configuring your own system, please refer to the following instructions.



2 Ovation Versions - Compatibility and Installation Steps

Native (ASIO on 3rd party hardware):

Compatibility: Windows 7 32 bit and 64 bit

Installation Steps:

- Ovation Software Installation, See: *Ovation Software Installation* on page 21
- Entering Authorization Keys, See: *Ovation Software Registration* on page 23
- Select ASIO and the correct card/device in the VS3 Control Panel (*Start Menu > Control Panel > VS3 Control Panel*)

Native with ASIO for Ravenna and Horus:

Compatibility: Windows 7 32-bit and 64-bit

Installation Steps:

- Install the Merging Ravenna ASIO Driver provided with your Horus or available from:
- Select ASIO and the correct card/device in the VS3 Control Panel (*Start Menu > Control Panel > VS3 Control Panel*)

<http://www.merging.com/download>

- Optional: Pyramix Software Installation See: *Pyramix Software Installation* on page 17
- If Pyramix Software is installed: Entering Authorization Keys See: *Pyramix Software Registration* on page 19
- Select the desired network adapter in Merging Ravenna ASIO Panel (*Start Menu > All Programs > Merging Technologies > Merging Ravenna ASIO Driver > Merging Ravenna ASIO Panel*) please see details in the Merging Ravenna ASIO and CoreAudio Guide available in *Start Menu > All Programs > Merging Technologies > Documentation > Merging Ravenna ASIO Driver > Merging Ravenna ASIO Panel*
- Select ASIO/Ravenna in the VS3 Control Panel (*Start Menu > Control Panel > VS3 Control Panel*)

Mykerinos only:

Not supported on version 9, upgrade to MassCore mandatory.



MassCore with Mykerinos:

Compatibility: Windows 7 Professional 32-bit **ONLY**

Installation Steps:

- Mykerinos Installation, *See: Mykerinos Installation on page 16*
- Ovation Software Installation, *See: Ovation Software Installation on page 21*
- Entering Authorization Keys, *See: Ovation Software Registration on page 23*
- MassCore Installation, *See: MassCore Installation on page 21*
- Select MassCore with Mykerinos in the VS3 Control Panel (*Start Menu > Control Panel > VS3 Control Panel*)

MassCore with Ravenna and Horus:

Compatibility: Windows 7 Professional 32-bit or 64-bit

Installation Steps:

- NET-MSC-GBEX1 Installation *See: Installing the Merging Technologies NET-MSC-GBEX1 PCIe Ethernet Controller Card on page 23*
- Ovation Software Installation, *See: Ovation Software Installation on page 21*
- Entering Authorization Keys, *See: Ovation Software Registration on page 23*
- MassCore Installation, *See: MassCore Installation on page 21*
- Select MassCore with Ravenna in the VS3 Control Panel (*Start Menu > Control Panel > VS3 Control Panel*)

Quick Setup Checklist For Systems with Horus

1. MassCore users **MUST** uninstall the previous MassCore version from the Windows Control Panel (Interval Zero RTX runtime).
2. MassCore users **MUST** configure their BIOS settings. *Please see: BIOS Settings on page 18*
3. Disable Windows Firewall in Windows Control Panel Security.
4. Increase Scheduling Priority. *Please see: MassCore and Networks on page 15*
5. Install Google Chrome.
6. Install Ovation v5.x (This will also install Pyramix v9.x.)
7. Enter your new v5/v9 keys in MT Security Settings.
8. Also in MT Security Settings install MassCore from the MassCore Tab.
9. MassCore SMP users (recommended for i7 CPU configurations and above) should launch the VS3 Control Panel and assign 2 cores to MassCore. (A reboot will be required.)
10. Shut down the system and install the MassCore NET-MSC-GBEX1 PCIe Ethernet controller card. (Card drivers are included in the Pyramix and Ovation installers.)
11. In the VS3 Control Panel ensure that Ravenna is selected in the Hardware section.
12. Configure the Switch/Router Please refer to the Ravenna Network Guide.
13. Launch Ovation.
14. You can also launch the MTDDiscovery application and open the Horus entry for remote access.
15. Ensure that the Horus is set to the same sampling rate as Pyramix or Ovation. A warning prompt will appear if this is not the case.
16. Configure I/O as required in Pyramix/Ovation and Horus. Ravenna users should consult the Ravenna Easy Connect Guide.



3 Ovation Overview

Ovation enables the user to run Cues of many Media and Command types, either manually like a spot player / cartridge machine or automatically against Run-time, Time-of-day or external LTC or MIDI TimeCode. The Ovation Sequencer can be controlled from a hardware controller, touch screens, GPIs, Sony 9-pin (P2) Protocol commands and MIDI.

Ovation consists of three modules, the OVPlayer, OV Controller and the OVSequence Designer / Show Controller. OVPlayer and OV Controller can be embedded into the main Ovation application, or run stand-alone on the same machine or any machine accessible on the network. By default the embedded player is enabled.

Ovation also includes the renowned Pyramix DAW.

For many applications the optional Ovation hardware controller will be highly desirable. VCube fully supports the Merging Technologies Virtual Transport technology.

Ovation Versions

Ovation is available in three main versions with a number of options.

Ovation Silver Designed for cut down systems where simple audio playback is needed.

Add the optional WebServer to be able to take control of your show from ANY web-connected device (Desktop, Laptop, SmartPhone, TabletPC).

Includes:

- Audio playback with up to 48 matrix outputs (with proper hardware)
- VST support
- MIDI and GPI/O support
- Pyramix editing
- Designed for Broadcast Playout, Small theatres, and where connection to a larger system of control is not necessary
- Optional WebServer

Ovation Gold Packaged for applications where the event also has show control requirements. Whether being controlled by an external show controller, or running the show itself, Ovation Gold delivers all the tools necessary to run a show, from pre-production to show-time.

Also, with a full Pyramix Virtual Studio Option set in the same box, the Ovation system becomes a true dual-purpose device by turning it into a large track-count recorder/editor/mix system at the touch of a button!

As with the Silver package, you can choose to add the Ovation WebServer option to the Gold package. With the ability to load multiple access points for a single show, distributing information and control has never been simpler.

Includes:

- All the Ovation Silver pack options
- Pyramix VS3 low-latency plugin support
- Support for all other control protocols (LTC, RS-422, MSC, Script/Batch files)
- Pyramix Music Pack
- Optional WebServer

Ovation Platinum The ultimate Ovation pack, Ovation Platinum features all the options available with the Gold package and adds to it our vast knowledge and experience in delivering a mix engine of truly astonishing size. In one Ovation Chassis, you can now harness the power of a 384-track mixer with another 384 channels of bussing, configurable as any amount of mono/stereo/surround busses that your show may need! Add to that a comprehensive Scene Snapshot and recall list with integrated glide times and a virtual large-format mixing console is included "in the box."



The Ovation WebServer option is included in the cost.

Includes:

- All the Silver and Gold packages options
- Track count up to 384 I/O @1Fs
- Integration with SmartAV Tango controller
- Support for Oasis/EuCon/HUI protocols
- Scene Snapshots and recall with user programmable glide times for anything from a single band of EQ gain all the way up to the entire mix-engine surface.
- Ovation WebServer option included

Items included with Ovation:

- Installation Media with Ovation, Pyramix, VCube and Virtual Transport software. This Installation Guide.
- **SafeNet** USB security dongle. The security dongle authorizes both the Ovation application, Pyramix application and any optional features.

Complete turnkey systems are available.

If you have purchased Ovation as an integrated (Turnkey) system, the installation information in this guide will be redundant, since these systems come with all hardware and software pre-installed. If you are configuring your own system, please refer to the following instructions.



4 For Users Performing Upgrades

Note: New v5 Keys have been issued for Ovation v5 users. Be aware that v4 keys will only work with the Beta and Release Candidate versions of Ovation 5.

Ovation

We recommend uninstalling any previous version of Ovation before installing Ovation 5.

From the Windows Control Panel select **Programs and features**.

Remove the installed version of Ovation.

Masscore

MassCore users **MUST** remove the existing MassCore runtime. Once you have installed Pyramix V9.1 follow these steps:

1. Ensure that you are logged on to your system with the User Account which was used to install MassCore in the first place. (This information can be retrieved with our MassCore Troubleshooting Guide - see below.)
2. Launch **MT Security Settings** and select the **MassCore** tab.
3. Click on the **Uninstall MassCore Runtime** button.
4. When the uninstall completes reboot the system.
5. After the system reboot return to **MT Security Settings** and select the **MassCore** tab.
6. Click on the **Install MassCore** to install the new version of MassCore.
7. Reboot the machine.

Note: A second automatic reboot will occur after the first login.

Note: After the installation you should see two **Interval Zero** entries in **Windows Control Panel > Programs and Features** which are:

For 32 bit systems:

1. **Interval Zero RTX 2011 with Service Pack 1 Runtime Professional**
2. **Interval Zero RTX 2011 with Service Pack 1 Update 5 Installed**

For 64 bit systems:

1. **Interval Zero RTX64 2013 Runtime with Service Pack 1**

If these entries are not present please refer to the document here:

http://www.merging.com/uploads/assets/Installers/Pyramix_8_1/IntervalZeroRTX_Uninstall_Troubleshoot.pdf



5 System Requirements

Wintel platforms tend to increase in number of cores, speed and performance at a tremendous rate. New and faster processors are released almost on a monthly basis. Therefore we have not included suggested Motherboard or Processor specifications here.

We maintain a list of up to date PC configurations in the Support Section of our website at:

<http://www.merging.com/pages/pconfig>

Other Components

- **Graphics Card:** In many situations the Intel Integrated Graphics (where supported by the motherboard and CPU) are perfectly adequate. If a graphics card is desired or required Merging recommend the **ATI FIREPRO** series of PCIe graphics cards.
- Sufficient HD space and speed for your audio media files. The speed and amount of disk space required depends on sample rate, wordlength, number of tracks and length of program material.
- A typical 7200 RPM SATA drive is sufficient for 48 tracks at 48 kHz. Higher track-counts and/or higher sampling rates will require an SSD drive and/or multiple drives configured in Raid 0, 1, 10 or 5
- We recommend disks should be formatted as **NTFS** volumes with 64kB block sectors.
- **BD/DVD/CD-ROM** combo drive or better
- SXGA 17" monitor or better. Multiple 19" monitors highly recommended.
Minimum resolution 1280x1024
- 3 button mouse

Mykerinos Systems

Certified Operating Systems

- **OS:** We recommend and certify **Ovation Version 5.0 and later** under **Windows 7 Professional (32-bit version)** and **Windows XP SP3 Professional (32-bit version)**.

Note: NEVER attempt to install Ovation on Windows **NT Server**)

Ovation MassCore Systems

Certified Operating Systems

- **OS:** We recommend and certify **Ovation Version 4.0 and later** under **Windows 7 Professional**, and **Windows XP SP3 Professional**.

Note: MassCore - Ravenna is ONLY certified under Windows 7 Professional (32-bit or 64-bit versions).

Ovation Native

Certified Operating Systems

- **OS:** We recommend and certify **Ovation Version 4.x** under **Windows 7 Professional**.
- Ovation Native **ONLY** (versions from 3.x onwards) is certified to work under Windows 7 - 64bit. **N.B.** Ovation Native is **NOT** certified for Windows XP64 or Vista64 versions.



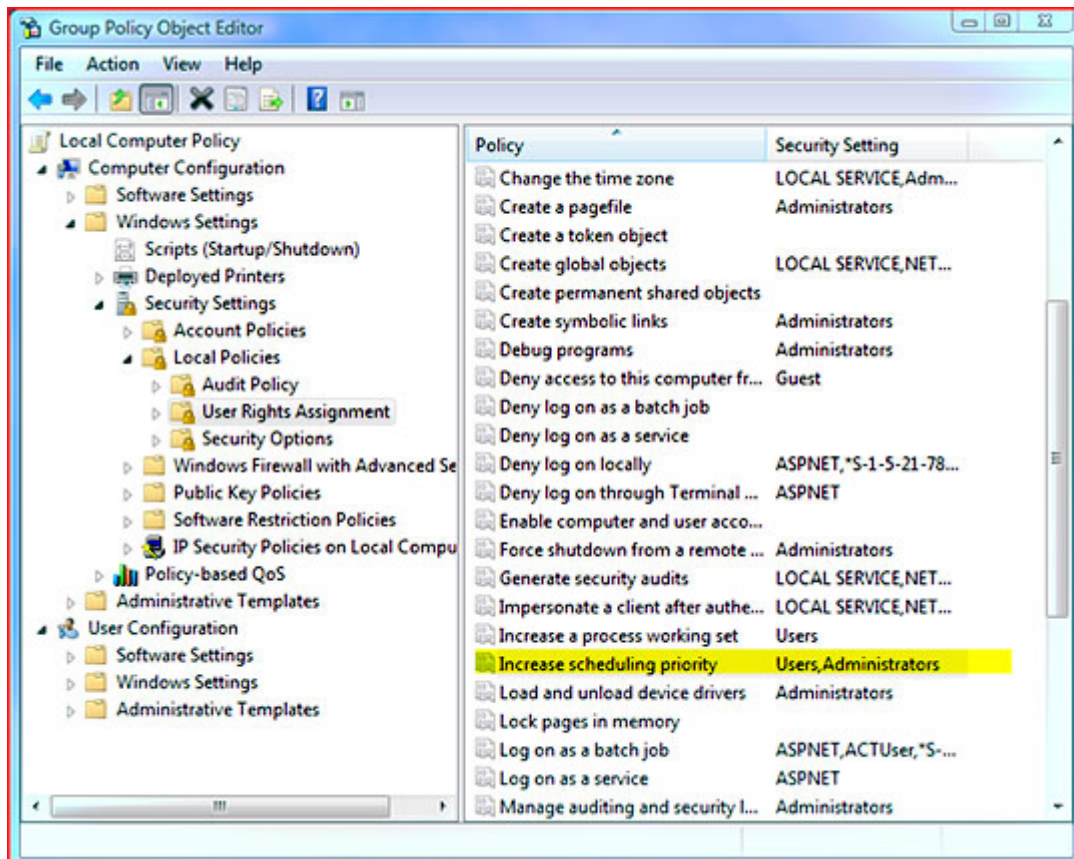
MassCore and Networks

Increase Scheduling Priority

For satisfactory operation over a network, you must add the User Group to which the User belongs to “Increase Scheduling priority policy” with the help of **gpedit.msc**. If the Machine belongs to a domain the **Administrator** of the domain must do this, if not then the Administrator of the system.

Procedure

1. Open the **Local Group Policy Editor**.
Start > Accessories > Run and type or paste **gpedit.msc**).

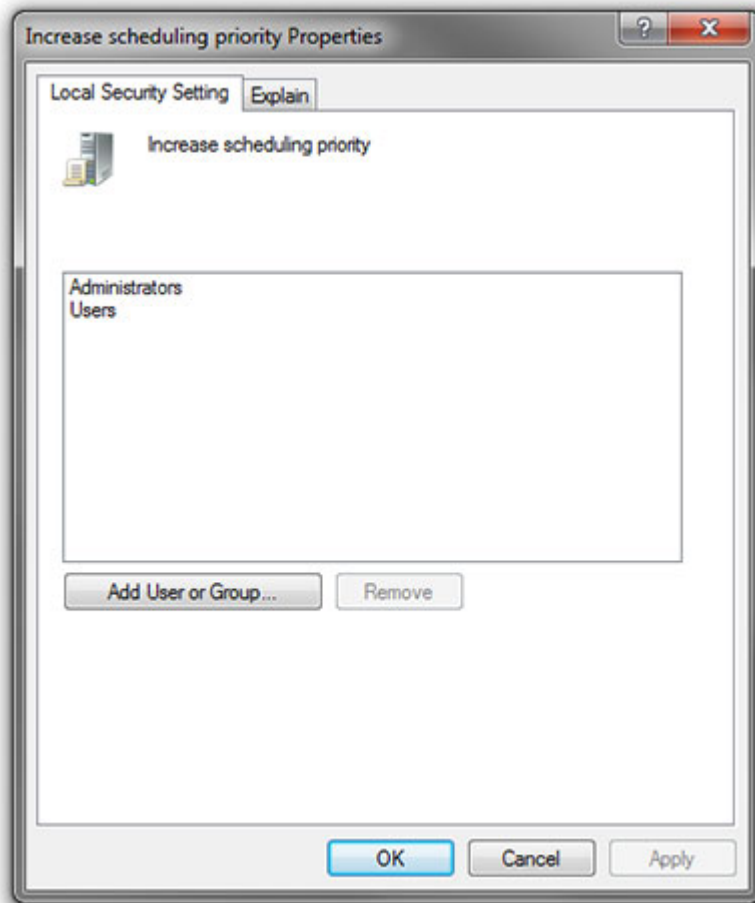


MassCore Windows GPO Editor Window

2. Navigate to: **Computer Configuration > Windows Settings > Security Settings > Local Policies > User Rights Assignment**

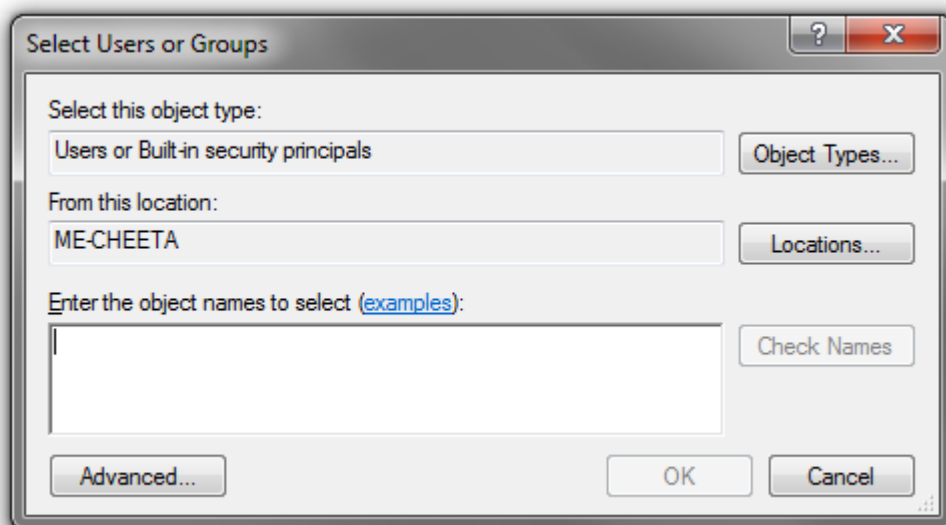


3. Double-click on **Increase scheduling priority** to open the **Increase scheduling priority Properties** dialog:



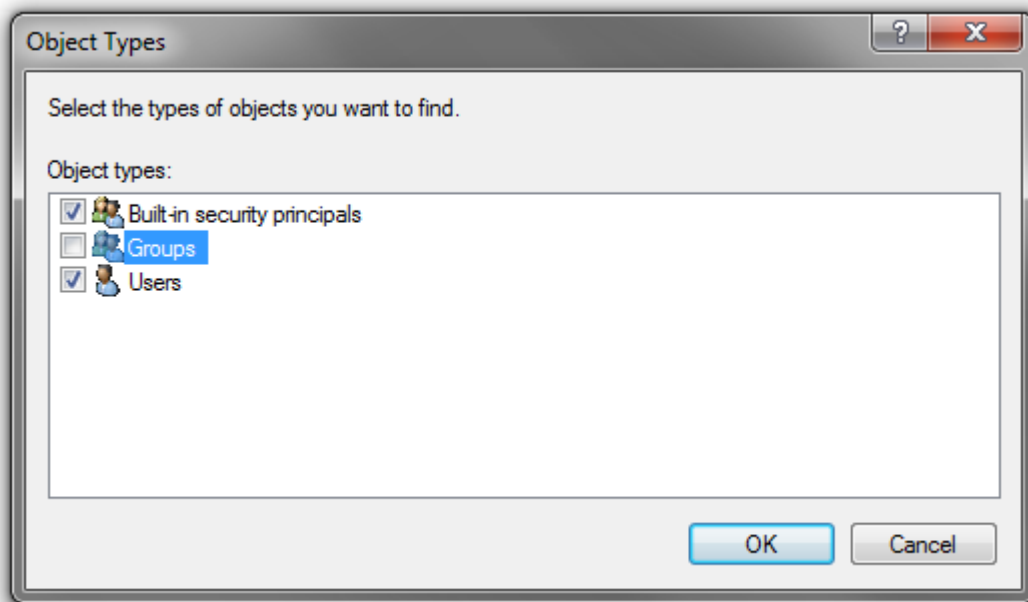
Increase scheduling priority Properties dialog

4. Click on the **Add User or Group** button to open the **Select Users or Groups** dialog:





5. Click on the **Object Types** button to open the **Object Types** dialog:



Object Types dialog

6. Ensure that **Groups** is ticked and click on **OK** to close the dialog.
7. In the **Select Users or Groups** dialog type the name of the User Group the user or users belong to (e.g. **Users**) in the **Enter the object names to select** field and click on the **OK** button to close the dialog.
8. The Group name you typed in step 5.) should now appear in the **increase scheduling priority Properties** dialog list.
9. Click on the **OK** button to close the dialog.

Note: that the **Groups** selection in the **Object Types** dialog is temporary and must be selected every time you wish to add or remove a Group.



6 PC Setup

Motherboard Drivers and Utilities

Motherboard drivers should be updated to current versions.

Motherboard Utilities should NOT be installed.

BIOS Settings

Recommended BIOS Settings

The following features can create MassCore overloads (blinking red **MSC**).

Intel® Hyperthreading Technology is supported on 64 bit MassCore systems but NOT on 32 bit systems, this setting must be disabled for the relevant CPU(s). This setting is commonly found in Main Bios page, or under CPU configuration. (see the motherboard manual for further details).

Intel® Speedstep Technology (also known as Enhanced Intel® SpeedStep), as well as CPU C State (or Intel® C-State) features must be disabled in the BIOS.

Some Recent Intel boards have a global setting to disable those features known as Intel® Dynamic Power Technology. If present this should be turned off. These settings are commonly found in BIOS Power options or CPU Configuration.

Overclocking is not supported.

Display Settings

Ovation requires a minimum display resolution of 1280x1024 in 256 colors which **MUST** be set to **small fonts** mode. In Windows 7 and Vista environments we strongly recommend turning **OFF** the Aero feature for maximum performance.

Power Management

N.B. As with other Digital Audio Workstations and Non-Linear Editors, we recommend setting the PC to an **Always On** Power management scheme. (In Windows XP: **Start > Settings > Control Panel** double-click **Power Options**. Choose **Always On** from the **Power Schemes** drop down list.) This allows the monitor to be turned off by the system but disables hard-disk spin down and Standby.

The Mykerinos and Mykerinos-X cards are **not** designed to support Standby modes.

Aero graphics

Windows 7 users should disable AERO themes for maximum performance.

Indexing

In the interests of better performance we recommend turning Indexing OFF for all Data drives in the system.

Other Applications

Like all real-time applications, Ovation works best when there are no other unnecessary applications or services running.



Recommended options

Internet Connection (this will allow you to upgrade the software easily by connecting to our Web site, and to communicate queries or suggestions to Merging by Email).

PCI MIDI Interface card (where none is fitted to the motherboard) or Sound Card with Midi interface or USB MIDI driver (where appropriate) for customers wishing to use Ovation MIDI functions, for example to interface Ovation with an external Midi remote controller such as:

- J.L. Cooper MCS-series
- Raditek SAC-2k
- Mackie Control

or external digital mixer such as:

- Sony DMX-R100
- Yamaha DM-2000
- Yamaha DM-1000
- Yamaha 02R-96



7 Mykerinos Installation

IMPORTANT NOTICE:

Mykerinos cards are supported ONLY on 32-bit systems.

Please read the following information very carefully before attempting any installation. Failure to comply with the precise instructions may result in damage to your Merging hardware. Please read the entire chapter carefully before installation.

STATIC DANGER NOTICE:

Please note that the Mykerinos Audio Board contains delicate electronic components that can be damaged or even destroyed when exposed to static electricity. Please take all of the necessary precautions when handling the Mykerinos board and all other PC computer cards.

Mykerinos Card Installation

Note: Note: for multiboard installation care must be taken in the selection of the PC chassis components to ensure adequate thermal dissipation through sufficient fan air cooling.

Inserting the Mykerinos Audio Board(s)

- Make sure the computer is turned off (and unplugged) before installing the Mykerinos board.
- To avoid the possibility of static electricity damage to the PC or the Mykerinos board(s) please use an anti-static strap to connect yourself to a known good earth.
- Remove the computer covers required to gain access to the peripheral slots.
- Locate a free PCI (Mykerinos) or PCI-e (Mykerinos-X) slot. It is generally inadvisable to use the slot adjacent to an AGP slot. Remove a slot / bracket for the chosen slot(s) (if needed)
- Insert the Mykerinos board(s) into the chosen slot(s)
- Ensure each Mykerinos is properly seated in the slot
- Fit any extra break-out connector brackets (if applicable)
- Fasten the mounting screw to secure the Mykerinos back-plate to the PC frame

Multi-board Installation

- For multiboard installation it is advisable to insert all Mykerinos boards in adjacent slots sharing the same PCI bus segment. Please refer to PC motherboard documentation.
- In order to enable multi-board operation, all Mykerinos cards in the PC must to be connected together using a special HDTDM ribbon cable with 30 pin plugs. This cable has to be plugged into the multi-pin connectors located on the top edge of the I/O daughter cards. Please contact your Merging Technologies Sales Partner for information on how to order the HDTDM ribbon cable.

Note: to reduce the risk of electro-magnetic interference being induced by other PCI cards into the highly sensitive Mic Preamp circuitry, systems equipped with Merging's **DUAL** (Analog + AES) daughtercard are best installed in a slot with no other card inserted in the immediately adjacent slot. (I.e. the component side of the card, which will be on the left looking from the front of a conventional PC chassis.)



8 Ovation Software Installation

Note: You must have full Administrator Access to install Ovation.

Installation Overview:

Note: If you have purchased hardware options such as Mykerinos cards, the NET-MSC-GBEX1 PCIe Ethernet card, the Sync Board and or an AJA video card, please install these following the instructions in the accompanying documentation. The drivers for all of these are installed automatically with the Ovation software.

Installer

The Ovation software uses an automated installer wizard which will install all necessary prerequisites. We use a unified installer package containing the current versions of Pyramix, VCube and Ovation. The initial installer screen offers the choice of Pyramix, VCube and Ovation. Choosing Ovation will also install Pyramix.

You may exclude the installation of any of the individual components in the wizard, if the device in question is not present on your machine or if you do not intend to use an item, by un-ticking the tick boxes next to the items listed in the wizard.

Note: The security dongle must be in place and the security keys entered before attempting to launch Ovation

Driver Signing

There is no **Driver Signing Options** dialog in Windows 7.

Windows throws up a warning dialog when unsigned drivers are installed. To avoid the necessity of clicking on **OK** several times you may wish to check the **Always Trust Drivers from Merging Technologies** box.

Flux VS3/V3 plug-ins

The Flux plug-ins are not bundled in the installer, they must be installed separately. Two versions are available, 32-bit and 64-bit. Download the appropriate installer and ensure you have valid Merging Flux v3 Keys in order to run these Flux VS3 plug-ins.

<https://www.fluxhome.com/download>



Running the Installer

Note: If you have a **SafeNet** dongle please remove this before installing Pyramix and replace it after installation is complete.

Note: The **HASP** dongle is not supported on 64-bit systems. If you have a **HASP** dongle please contact your Merging Technologies Sales Partner to purchase a **SafeNet** dongle and transfer your keys.

Once the NET-MSC-GBEX1 Ethernet card and or Mykerinos card(s) have been properly installed, you can now install the Ovation 5.x software.

To install the Ovation 5.x software insert the USB memory stick. The installation program will auto-start on a PC where auto-start is configured **on**. Otherwise, double-click on the USB memory stick icon.

Please follow the automatic installation procedure accepting the option to install unsigned drivers (one per Mykerinos board) and re-boot your PC once setup is complete.

Note: If the installation appears to freeze for a long period please check that the **Driver Signing** warning dialogue is not hidden behind another Window. Installation will not continue until you click **OK** in this dialog.

WARNING: Certain computers do not properly shut down despite the reboot command issued by the installer but only perform a log off. In this case, please activate a full shut down manually.



9 Ovation Software Registration

The **Ovation** software and its various software options are protected by an authorization key mechanism which uses a unique registration key number generated by Merging Technologies. Based on purchased software components, this key is unique to your security dongle or Mykerinos board serial number, your Company Name and your User name. Once you have registered your software you will be provided with this Key or Keys (depending on the chosen options).

In a multi-board system only one key is required for all connected boards. The master board validates the others.

If you did not receive this key, have lost it or would like to change the user and/or company name, please contact your Merging Sales Partner with your Mykerinos serial #, your User Name, your Company Name and the list of purchased software components. Usually, a key can be issued within one business day, after the verification of your personal data has been completed.

Entering your Key(s)

After the Ovation installation process you will be prompted to enter your **Authorization Key**. If you click **Yes** the **MT Security Settings** dialog will be launched automatically, allowing the Key or Keys to be entered immediately. If you choose not to enter your Key at this point you can do so later by choosing one of the following procedures:

1. Double-click the file **YourPersonalKeyXXXXX.mtk**. This is attached to the email containing your Key(s).
2. Open the **MT Security Settings Control Panel**
(Windows Task Bar **Start > Control Panel > MT Security Settings**),
click the **Import Key** button and browse for your Key file called

YourPersonalKeyXXXXX.mtk

3. Open the **MT Security Settings Control Panel** (as above), in the **Registration** section select the board number corresponding to the serial number for your Keys or HASP/SafeNet Key for a dongle, click the **Enter Key** button and type your **User Name**, **Company Name** and **Key** then click **OK**. Repeat this step for each Keys listed in the email.

Changing or re-entering a Key

Should you need to subsequently change or re-enter a **Key**, follow the appropriate option above.

The key system is "smart". Only one key or set of keys is required regardless of the number of boards in a system. Any card can hold this key set as the authorization is processed based on a "Logical OR" of all keys present on any and all Mykerinos boards. Of course this Logical OR will only process keys with identical User Name and Company Name to the one entered in the key enabling window.

Evaluation Mode

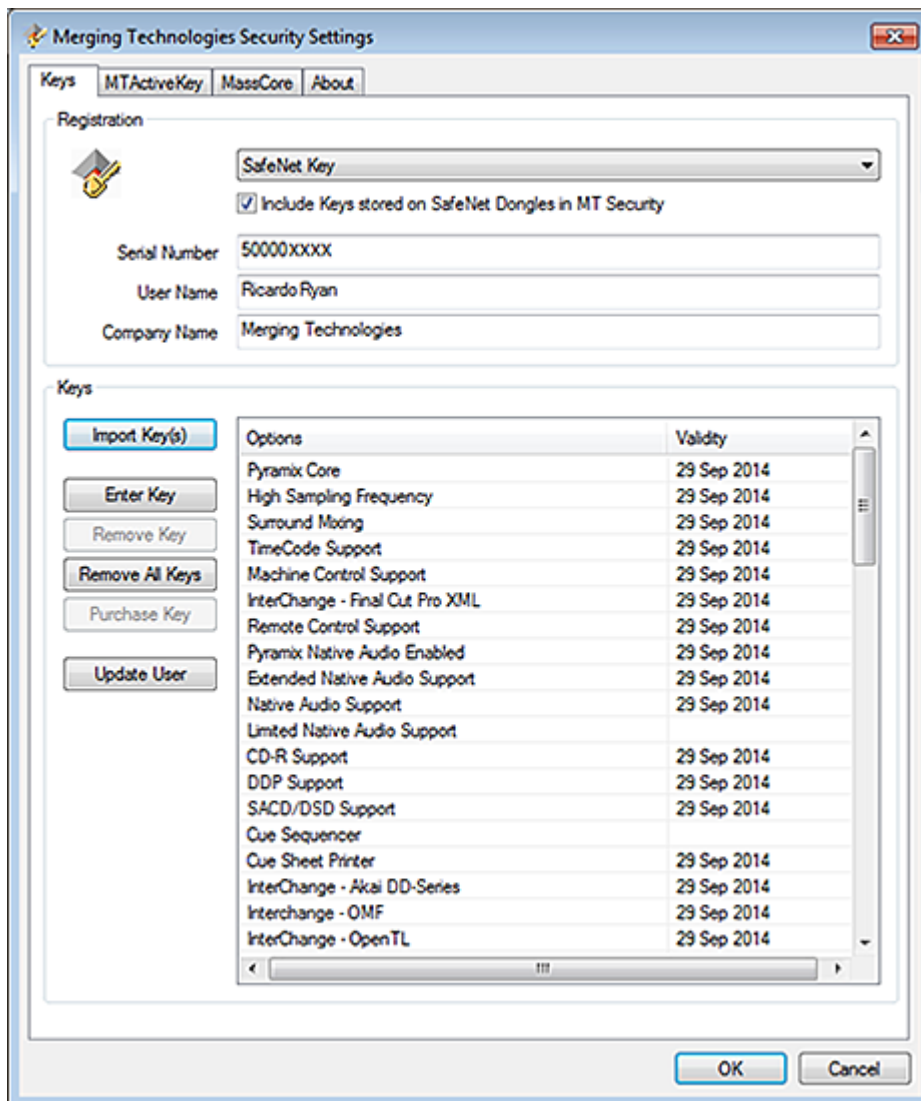
If started without a valid registration key, the software will recognize that no valid key is available and will start in "evaluation" mode, which only allows for basic operation of the software as follows:

- Limited to 2 channels of I/O on host soundcard
- No **Project > Save** function
- Tone is added to new recordings
- All optional extra cost features are deactivated

All editing functions, playback, file type conversions etc. are fully functional.

Keys

At any time you can check the serial number of your Security dongle or Mykerinos card(s) and the software options enabled in your system in the **MTSecurity** application.



Merging Technologies Security Settings

Keys | MTActiveKey | MassCore | About

Registration

SafeNet Key

☒ Include Keys stored on SafeNet Dongles in MT Security

Serial Number: 50000XXXX

User Name: Ricardo Ryan

Company Name: Merging Technologies

Keys

Import Key(s) | Enter Key | Remove Key | Remove All Keys | Purchase Key | Update User

Options	Validity
Pyramix Core	29 Sep 2014
High Sampling Frequency	29 Sep 2014
Surround Mixing	29 Sep 2014
TimeCode Support	29 Sep 2014
Machine Control Support	29 Sep 2014
InterChange - Final Cut Pro XML	29 Sep 2014
Remote Control Support	29 Sep 2014
Pyramix Native Audio Enabled	29 Sep 2014
Extended Native Audio Support	29 Sep 2014
Native Audio Support	29 Sep 2014
Limited Native Audio Support	29 Sep 2014
CD-R Support	29 Sep 2014
DDP Support	29 Sep 2014
SACD/DSD Support	29 Sep 2014
Cue Sequencer	29 Sep 2014
Cue Sheet Printer	29 Sep 2014
InterChange - Akai DD-Series	29 Sep 2014
Interchange - OMF	29 Sep 2014
InterChange - OpenTL	29 Sep 2014

OK Cancel

MT Security Settings - Keys tab



10 MassCore Installation



System Requirements

A quad core Intel processor is the minimum requirement.

Conditions

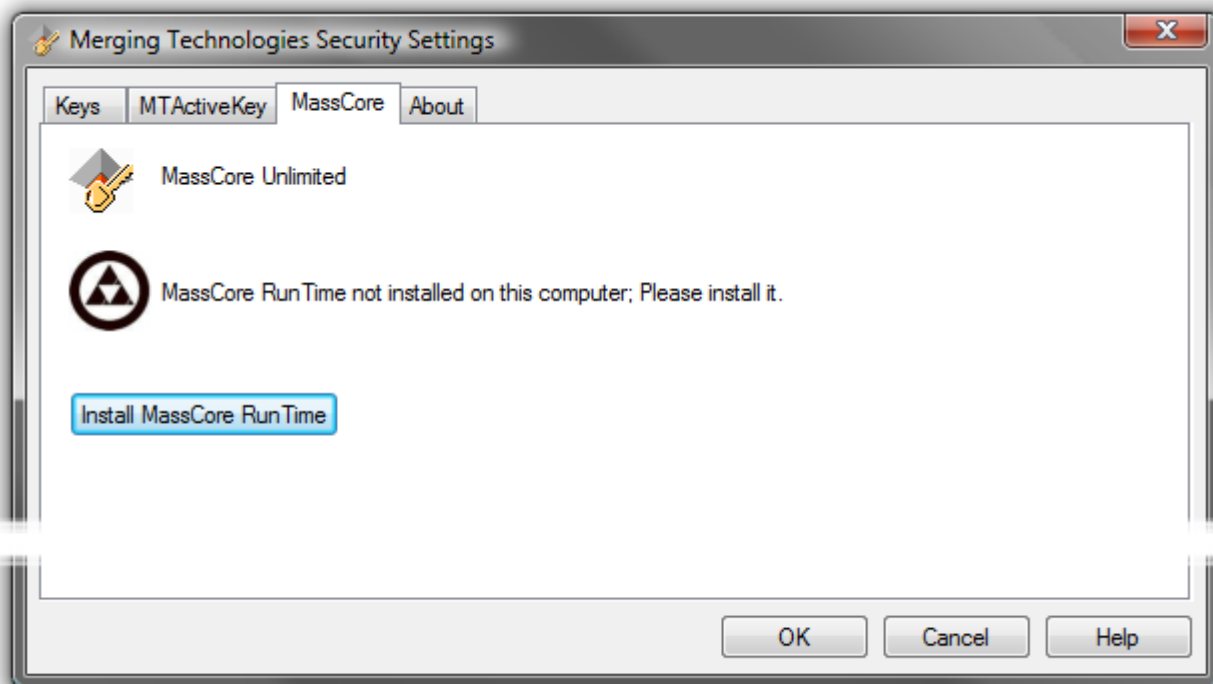
- You **MUST** be logged in as an **Administrator** to install **MassCore**

Note: You do not need to be logged in as an Administrator to **RUN** Ovation with MassCore™, just to install it.

- You must have at least one Mykerinos board or a NET-MS-GBEX1-Ethernet card in your system.
- You must have a MassCore 48 (Base) Key in order to proceed with the installation. Please contact your Merging Technologies Sales Partner if you do not have this option but want to use MassCore.

MassCore Installation

1. Install v5.x Ovation.exe
2. Restart your system after the Ovation install
3. Enter Your Key(s) in **MT Security Panel** (Make sure you have a valid MassCore key.) The MassCore 64bit and RTX64 keys are required for 64-bit systems.)
4. For automatic RTX licence validation on 64-bit systems ensure the system is connected to the Internet during the MassCore installation.
5. In the **MT Security Panel** select the MassCore Tab
6. Press the **Install MassCore RunTime** button (will only be enabled if the MassCore Base Key is present)



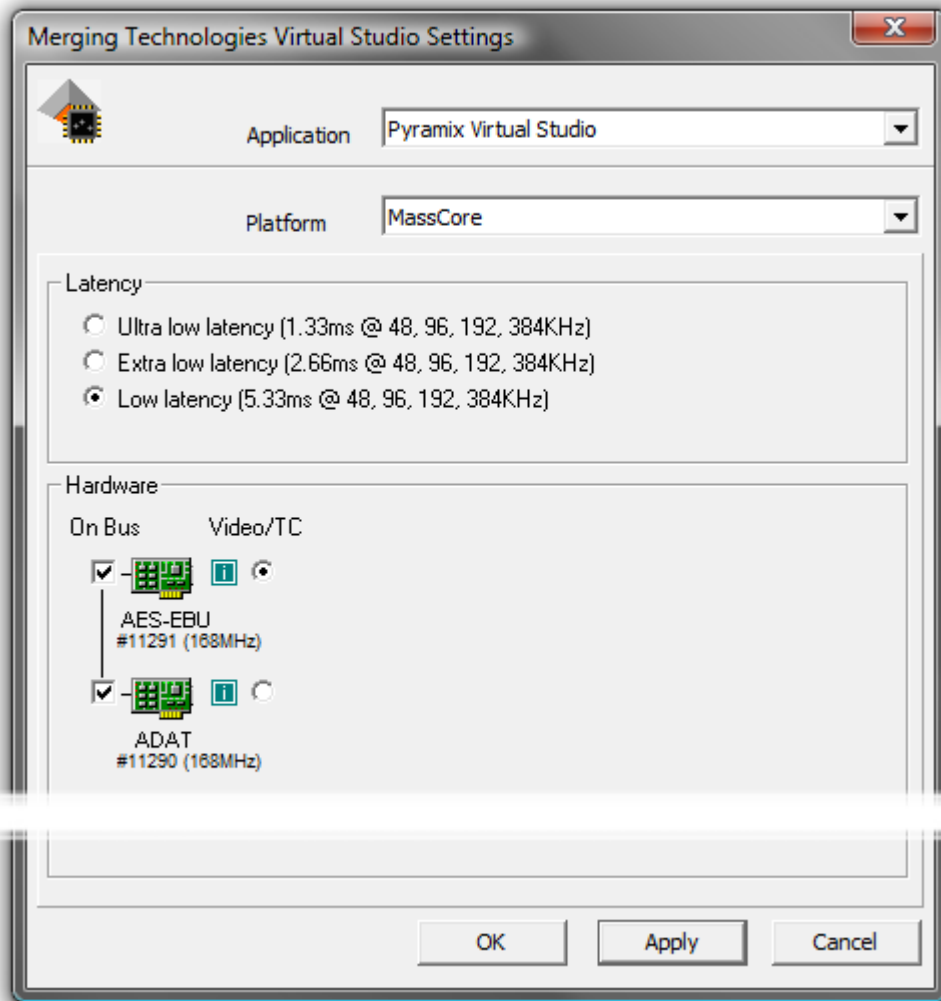
VS3 merging Technologies Security Settings dialog

7. Restart System after the install
8. Launch the **VS3 Control Panel**



9. In the Platform section select **MassCore**
10. We recommend the use of Low latency mode by default . Ultra low latency & Extra low latency are available for Horus users with Pyramix v9.x recommended configurations.

<http://www.merging.com/pages/pconfig>



VS3 Merging Technologies Virtual Studios Settings dialog

64 Bit MassCore Notes

- Double licence protection, both MassCore 64bit and RTX64 keys are required BEFORE MassCore installation. The MassCore 64 bit installation can be performed only if these two keys are present.
- The RTX64 Activation key licence is authorized by an online tool on Interval Zero's site after the Merging software (MassCore) installation is complete.
- Note that the RTX64 MassCore licence can only be installed ONCE, since it is locked to the system.
- At present if there is a requirement use MassCore Pyramix on two different computers regularly, it will be necessary to purchase a second MassCore 64bit Base key. **Note** that a solution exists for those who would like to have their MassCore/RTX64bit keys stored on a dongle (Hasp/IntervalZero), instead of having them linked to a unique system. This allows users to move their MassCore/RTX64 licensing to different systems by carrying two dongles (Merging-SafeNet & IntervalZero-HASP). This solution requires the purchase of an additional dongle. Please contact your local Merging Technologies sales office if you require this option.



Re-licencing MassCore 64 bit RTX

If a systems needs to be re-licenced for example after a Windows OS re-installation process or if it is necessary to move the licence to another system, then you will have to contact Interval Zero in order to complete the re-licencing process as Merging is not able to provide this service. Ensure that you have the RTX64 Authorization Key number (RTX64-XXX-XXXX-XXXX...) when doing so.

Interval Zero Support team:

<http://www.intervalzero.com/technical-support>



11 MassCore - Ravenna



Certified Operating Systems (OS) for Ravenna

Ovation Version 5.x MassCore in Ravenna mode is certified under Windows 7 Professional (32-bit and 64-bit versions) ONLY.

System Requirements

We maintain a list of up to date PC configurations in the Support Section of our website at:

<http://www.merging.com/pages/pconfig>

Please refer to the MassCore-Ravenna recommendations (Quad-Core is the minimum requirement)

Required Hardware

The Merging Technologies NET-MSC-GBEX1 PCIe Ethernet controller card is required for MassCore - Ravenna.

Installing the Merging Technologies NET-MSC-GBEX1 PCIe Ethernet Controller Card

The NET-MSC-GBEX1 PCIe card should be installed in your computer before installing Ovation v5.x.



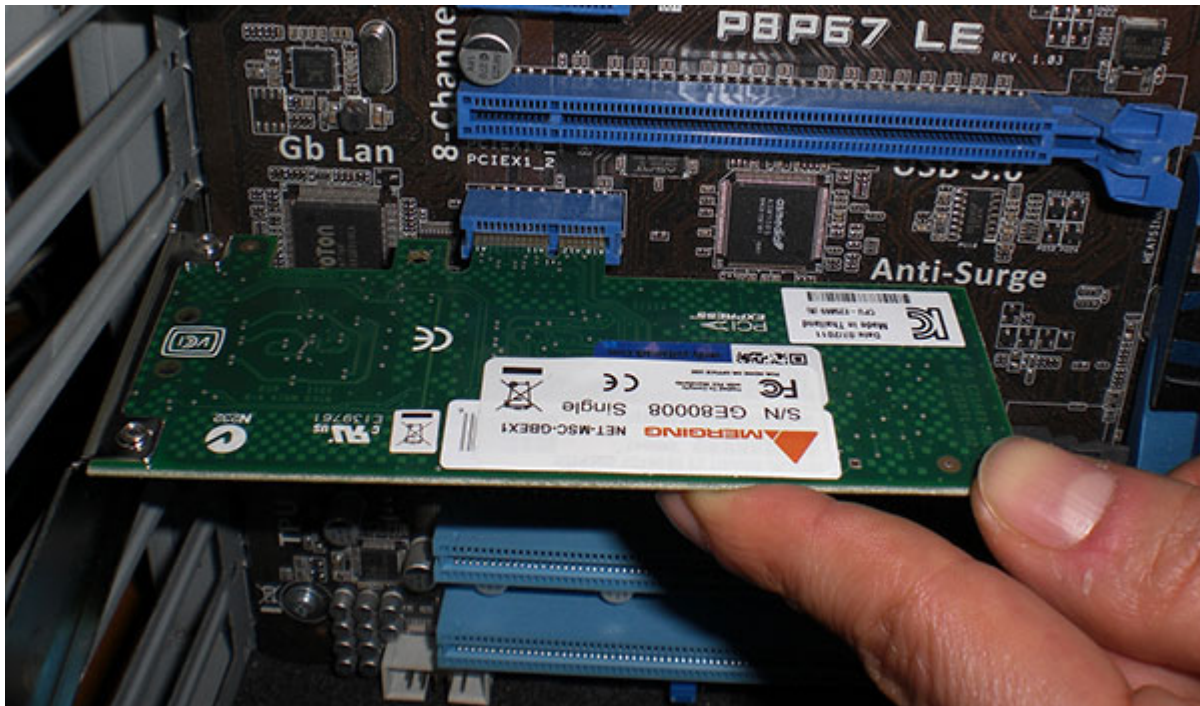
The NET-MSC-GB EX1 card

Procedure

1. Power down your PC and switch it off at the wall. Remove the screws securing the top or side of the case and carefully slide off the panel.
2. An anti-static wristband is sensible precaution whenever working with sensitive electrical equipment. Keeping one hand on a metal part of the case will have the same effect, though you may need both hands when installing certain items of hardware.
3. Locate an empty PCIe slot and remove the metal backing plate by removing the screw holding it in place and carefully sliding it up and out. In some cases, there are no backing plates and you will need to remove a length of metal instead. Do this using a flat-blade screwdriver and/or pliers, taking care to avoid any sharp edges left behind.



4. Remove the NET-MSC-GBEX1 card from its protective anti-static envelope and align it with the vacant PCIe slot as shown below.



Installing the NET-MSC-GB EX1 card

5. Push down, gently at first, ensuring you have the pins aligned correctly with the slot, and then apply more pressure to slot the card fully home.
6. Use the screw which was used to retain the backing plate to secure the card in place and check that the card sits comfortably.
7. Finally, replace the case cover(s) and switch the machine back on at the socket.
8. At the next power up and boot Windows will discover the Merging Ethernet PCIe card.

Ovation v5.x can now be installed.

Required Software

In order to operate Ovation with Ravenna and Horus, Ovation v5.x must be installed. The Ovation v5.x installer includes; the MassCore-Ravenna Connect utility, MT Discovery tool along with Apple Bonjour.

Note: Driver signing. Please tick **Always trust “Merging Technologies”** when the first warning message about unsigned drivers appears.

Enter your Ovation keys

Launch MTSecurity settings and enter your Ovation v5.x keys. **Please see Entering your Key(s) on page 23**

Install MassCore

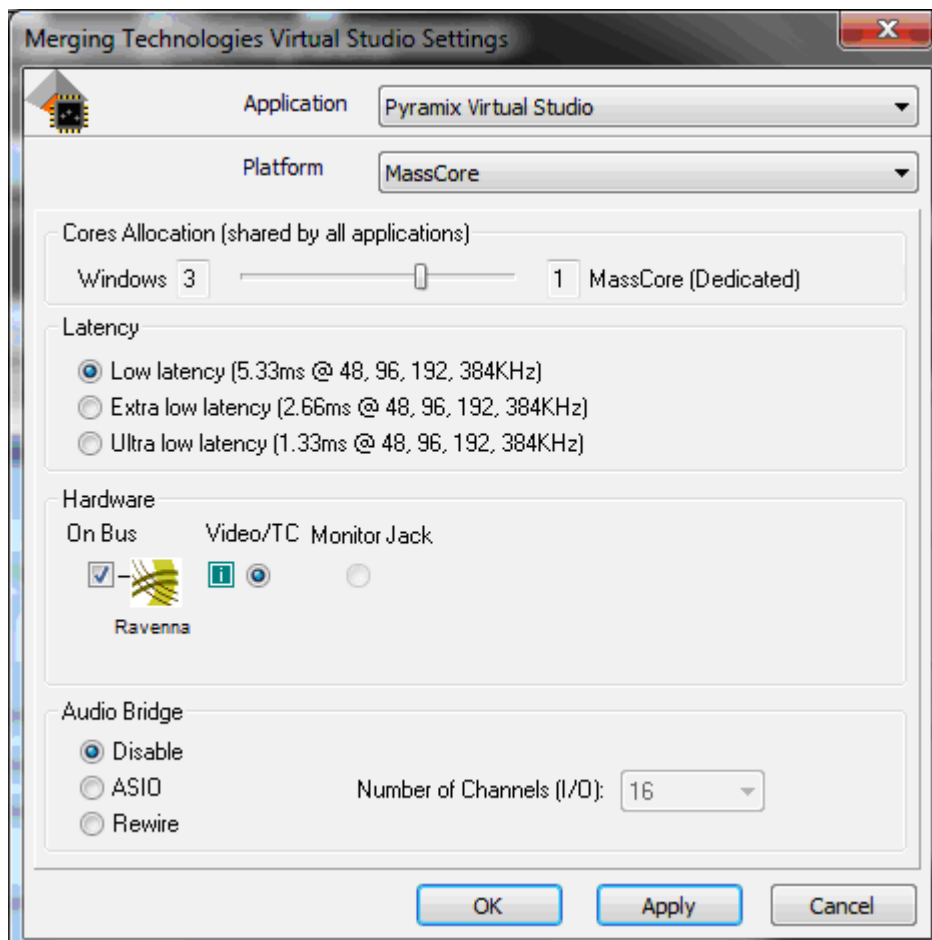
Please see: MassCore Installation on page 25

Note: A valid MassCore (Base) key is mandatory.

The MassCore key is held on the Safenet dongle. Please make sure that you are in possession of a dongle and valid keys in order to operate Ovation in MassCore-Ravenna mode.

Note: The NET-MSC-GBEX1 Ethernet card requires MassCore in order to function.

Configure Ravenna in the VS3 Control Panel



VS3 Merging Technologies Virtual Studios Control Panel

1. Launch the **VS3 Control Panel**
2. **Cores Allocation** Leave on the default setting for now.
3. For now, leave **Latency** on the default setting **Low Latency**
4. Select **Platform : MassCore**
5. Select **Hardware : On Bus** as **Ravenna** (box ticked)
6. **Audio Bridge** : Set as required.
7. Click on the **OK** button.
8. When the VS3 panel **Do you want to save routing?** dialog box appears, click on **OK**
9. the VS3 control panel will close.

Before First Launch

Before launching Ovation v5.x, you must ensure that a **PTP Master*** is present on your Ravenna network. Merging Technologies recommends using its **Horus** converter as PTP Master.

* The Precision Time Protocol (PTP) is a protocol used to synchronize clocks throughout a computer network.

Note: As of v5.x RAVENNA mode supports all three Latency modes. (VS3 Control Panel)
To enable Ravenna I/O connections please refer to the separate Ravenna Easy Connect Guide.

Note: Horus users should refer to the Horus User Manual for configuration set-up with Ovation.



Troubleshooting

Ravenna: Horus & Network configuration

Merging recommend that the Ethernet MassCore card and Horus are configured to obtain an IP address automatically.

Setting Horus and Network Card to Obtain IP Addresses Automatically

Network Card

1. Open **Network Connections** in the Windows **Control Panel**
2. Right-click on the MassCore Ethernet card NET-MSC-GBEX1 and open **Properties**.
3. Select **Internet Protocol Version 4, TCP/IPv4** (which is the only one activated) and click on **Properties**.
4. Select the **Obtain an IP address automatically** option.
5. Click on **OK** in each dialog to accept the changes and close the dialogs.

Horus

1. Open the **Horus Setup >Advanced > Network** page
2. In the **IP address** section select **Auto**

Setting Fixed IP addresses

1. First, check the IP address of the Horus device under **Setup > Network**
To be able to see each other, the Merging Technologies Network card and Horus must be in the same range of addresses. (for example **192.168.xxx.xx**).
2. The Horus IP address can be checked (and changed if required in the **Horus Setup page> Network**)
3. The IP address of the MT Network card can be changed in **Windows Control Panel > Change Adapter Settings**
4. Right click on the Merging Technologies NIC and select **Properties**.
5. Select **Internet Protocol Version 4, TCP/IPv4** (which is the only one activated) and click on **Properties**.
6. Switch to **Use the following IP address** and enter an IP address that is in the same range as the Horus IP address. The Subnet Mask should be added automatically.
7. Click on **OK** in each dialog to accept the changes and close the dialogs.

Windows Firewall and UAC

Recommendation

If not configured correctly, Windows Firewall can block communication between MassCore and Horus. User Account Control should also be set to **Never Notify**.

Firewall

- Open the Windows **Control Panel**. Open the **System and Security** section and under **Windows Firewall** disable the Firewall for the Public Network.
- Go back to the Windows **Control Panel** and click on Windows **Firewall**. Click on **Change notification settings**. Ensure **Block all incoming connections, including those in the list of allowed programs** is **NOT** ticked.

User Account Control

- Open the Windows **Control Panel**. Open the **User Accounts** section and under **Change User Account Control Settings** move the slider down to **Never Notify**.

Antivirus

Recommendation

- Merging also recommends that any Antivirus software be disabled. Some Antivirus software such as *Avast* have been known to block the Horus discovery and Ravenna I/O connections.



12 First launch

Important! After installation has been completed, please reboot the PC before attempting to launch Ovation. Then open the **VS3 control panel** application.

Start > All Programs > Merging Technologies > VS3 Runtime > VS3 control panel

For Systems with MassCore

Follow the instructions above, depending on whether you have one or multiple boards fitted with this exception:

- First - choose **MassCore** from the **Platform** drop-down list.

For Systems with MassCore and Ravenna

Please see: **Configure Ravenna in the VS3 Control Panel** on page 30

For systems with a single Mykerinos board:

- Leave all default selections as they are, making sure the **On Bus** checkbox for your Mykerinos card is indeed checked.
- For now, leave all other settings as they are.
- Click on the **OK** button.
- When the VS3 panel **Do you want to save routing?** dialog box appears, click on **OK**
- the VS3 control panel will close

For systems with a multiboard configuration:

- Make sure there is a check mark in the **On Bus** boxes for each board installed.
- Check that the **Application** combo box is showing **Ovation**. If not, select it from the list.
- Select which board is to provide an external **Video/TC** reference with the radio buttons next to the board icons.
- For now, leave all other settings as they are.
- Click on the **OK** button.
- When the VS3 panel **Do you want to save routing?** dialog box appears, click on **OK**
- the VS3 control panel will close.

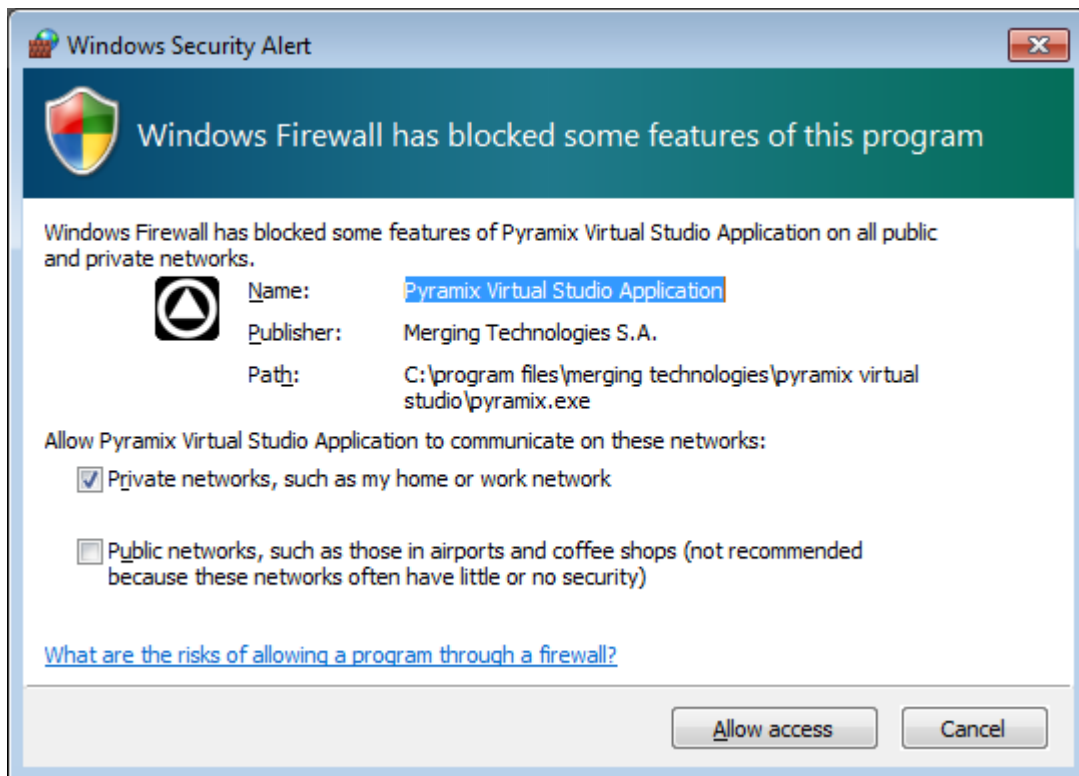
Launch Ovation

Double-click on the **Ovation** desktop icon to launch Ovation.

Please see important information on next page!



At the first launch a firewall approval dialog may appear:

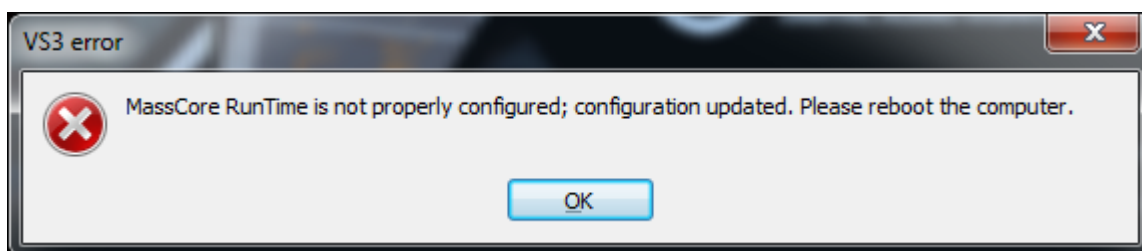


Windows Security Alert dialog - Windows Firewall

Click on **Allow access** since this is necessary to ensure correct VT2 (Virtual Transport 2) functioning.

Note: For further information about options available in the VS3 Control Panel, please see the Pyramix User Manual.

Note: At first Pyramix launch and or after installing MassCore the following alert box may appear. If it does please reboot the computer one more time:



VS3 error alert box

Documentation

The **User Manual** and **Quick Start Guide** are available from within Pyramix and may be accessed via the **Help** menu or by pressing **F1**, or online at:

<http://www.merging.com/downloads>



13 Troubleshooting

Please visit regularly:

www.merging.com

for the latest Troubleshooting Guide and FAQ sections.

14 Lost or Stolen Merging Technologies Security Keys

(Sentinel / HASP USB Dongles)

The Merging USB Key carries all the value of your Merging software and the software licence authorization to use it. Please ensure you do not lose the USB key as Merging Technologies cannot be held responsible if this is lost or stolen.

If your USB key is lost or stolen then please make a claim on your insurance in the usual way just as you would for any other item you own. Merging will be happy to confirm the details and value of the software licence and USB key to your insurance company. If your USB key is lost or stolen and a different user should attempt to register for this key, Merging will notify you and the authorities in your country that an attempt has been made to register this stolen item.

If your USB key should become defective or is broken, please ensure this key is returned to merging after requesting and RMA (Return Merchandise Authorization.) Only after the receipt of this key in the Merging Offices will it be determined if it may be exchanged under warranty free-of-charge, or if the damage is outside the warranty scope. in which case only a modest fee to replace it with a new key will be charged (and not the entire value of the software.)



15 Contacting Merging

International Office:

Merging Technologies S.A.

Le Verney 4

CH-1070 Puidoux

Switzerland

Phone: +41 21 946 0444

Fax: +41 21 946 0445

UK:

Merging UK (Emerging)

23 Easter Park

Benyon Road

Silchester

Reading UK

RG7 2PQ

Phone: +44 (0) 118 402 5090

Fax: +44 (0) 870 1231747

Email: sales@merginguk.com

USA:

Merging USA (Independent Audio)

43 Deerfield Road

Portland,

ME 04101-1805

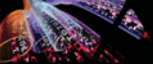
United States of America

Phone: +1 (207) 773 2424

Fax: +1 (207) 773 2422

For all documentation inquiries or suggestions for improvement:

<http://www.merging.com>



Index

Numerics

64 Bit MassCore Notes 26

A

Aero graphics 18

Antivirus 31

B

BIOS Settings 18

C

CE Notice 3

Changing or re-entering a Key 23

Contacting Merging 35

D

Digital mixers 19

Display Settings 18

Do you want to save routing? 30, 32

Driver Signing 21

DUAL 20

E

EMC Emissions 3

EMC Immunity 3

Entering Keys 23

F

FCC Notice 3

Firewall 31

First launch

Multi-board system 32

Single board system 31, 32

Flux VS3/V3 plug-ins 21

H

Hardware Warranty Information 4

I

Import Key 23

Increase Scheduling Priority 15

Increase scheduling priority 16

Indexing 18

INFORMATION FOR THE USER 3

Inserting the Mykerinos Audio Board 20

Introduction 8

K

Keys 24

L

Latency modes 30

M

MassCore

Ravenna 28

MassCore 64 bit RTX -relicensing 27

MassCore and Networks 15

MassCore Network Permissions 15

MassCore Systems 14

MIDI 19

Midi remote controllers 19

MT Security Settings 23

Multi-board Installation 20

Mykerinos Card Installation 20

Mykerinos Installation 20

Mykerinos serial number 24

Mykerinos Systems 14

N

Native Install 22

O

Other Applications 18

P

PC Setup 18

Power Management 18

Power Schemes 18

R

Ravenna 28

Recommended options 19

S

SafeNet dongle 22

small fonts 18

Software Installation 21

Software Registration 23

STATIC DANGER 20

STATIC DANGER NOTICE 3

System Requirements 14

T

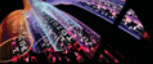
Thank you 8

Troubleshooting 34

U

UAC 31

User Account Control 31



V

VS3 control panel 30, 32

W

Windows Firewall 31, 33

Y

YourPersonalKey 23

