



Pyramix
DIGITAL AUDIO WORKSTATION

Installation Guide

14



No part of this documentation may be reproduced in any form whatsoever or be stored in any data retrieval system without prior written permission of the copyright owners.

This documentation is supplied on an as-is basis. Information contained within this documentation is subject to change at any time without notice and must not be relied upon.

All company and product names are ™ or Registered Trademarks ® of their respective owners. Windows 7, Windows 10 and Windows 11 are trademarks of Microsoft Corporation.

Merging Technologies makes no warranties express or implied regarding this software, its quality, performance, merchantability or fitness for a particular purpose. The software is supplied “as is” you, the purchaser, are assuming the entire risk of the results of using this Merging Technologies software.

In no circumstances will Merging Technologies, its owners, directors, officers, employees or agents be liable to you for any consequential, incidental or indirect loss or damages including loss of time, loss of business, loss of profits, loss of data or similar resulting from the use of or inability to use the Merging Technologies hardware and or software or for any defect in the hardware software or documentation.

©Copyright Merging Technologies Inc.2022. All rights reserved



Installation Guide v14.x



Installation Guide Pyramix 14 : Contents

1 Introduction	6
Thank you!	6
Scope	6
Windows 10 - IMPORTANT!	6
Windows 11 - IMPORTANT!	7
2 Pyramix Versions - Compatibility and Installation Steps	8
3 For Users Performing Upgrades	10
4 System Requirements	12
Pyramix MassCore Systems	12
Pyramix Native	12
5 PC Setup	13
Motherboard Drivers and Utilities	13
BIOS Settings	13
Configuration Guides	13
Display Settings	14
Power Management	14
Drive Indexing	15
Other Applications	15
Video in Timeline / PyraCube	15
Video Hardware	15
ADR/Ovation Keyboards	15
6 Pyramix Software Installation	16
Installation Overview	16
Flux VS3/V3 plug-ins	16
VB VS3 plug-ins	16
Standalone Album Publishing application	17
7 Running the Installer	17
8 Pyramix Software Authorization	18
9 MassCore Installation	20



System Requirements	20
MassCore Installation	20
MassCore Installation - Upgrade	21
10 MassCore – RAVENNA	23
Installing the Merging Technologies NET-MSC-GBEX1 PCIe Ethernet Controller Card	23
Configure RAVENNA in the VS3 Control Panel	25
Before First Launch	25
Troubleshooting and tips	26
11 Native - ASIO/WDM	29
Installing the ASIO driver	29
Configure ASIO in the VS3 Control Panel	30
12 First launch	31
13 Troubleshooting	33
14 Lost or Stolen Merging Technologies Security Keys	33
15 Contacting Merging Technologies	34



Installation Guide V14.x



Document : Pyramix™ v14 Installation Guide Rev 3
Date :12 January 2022



1 Introduction

Thank you!

Congratulations on your purchase of Pyramix Virtual Studio. More than just a product, this is a gateway to the future of sound recording, editing, mixing and mastering. You have joined a worldwide community of users who have already discovered the Pyramix advantage.

Note: IMPORTANT!

The first thing you need to do is register your software to acquire your Pyramix key(s) and to be included in our user support list.

<https://my.merging.com/auth/register>

Please also subscribe to the User Forum at:

<https://forum.merging.com>

Scope

Pyramix Virtual Studio is a powerful and flexible Digital Audio Workstation (DAW) integrating hard disk recording and editing, digital audio mixing, effects processing, metering, machine control, video and mastering. Complete turnkey systems are available.

This document is intended to get you up and running with Pyramix, Pyramix MassCore and Pyramix MassCore RAVENNA as quickly as possible. For more detailed information about the Horus / Hapi / Anubis hardware and the Pyramix software please see their specific guides. If you have purchased Pyramix Virtual Studio as an integrated (Turnkey) system, the installation information in this guide will be redundant, since these systems come with all hardware and software pre-installed. If you are configuring your own system, please refer to the following instructions.

Windows 10 - IMPORTANT!

Note: Merging strongly recommends you defer feature updates in Windows 10. Windows 10 users should never update to Beta Windows versions or install major new updates before making sure they are supported by Merging.

Please refer to our Windows 10 Configuration Guide:

<https://confluence.merging.com/display/PUBLICDOC/Windows+10+Configuration>

Details about the recommended Windows 10 Defer Update setting

<https://confluence.merging.com/display/PUBLICDOC/Windows+10+Defer+Updates>

Windows 10 Recommended Version for MassCore Pyramix v14.x

- May 2021 update (21H1) is supported since Pyramix 25th HotFix 3 & RTX64 3.7.4
- October 2020 update (20H2) is supported since Pyramix 25th HotFix 3 & RTX64 3.7.4
- May 2020 Update (2004) is supported since Pyramix 25th HotFix 3 & RTX64 3.7.4
- November 2019 Update (1909) supported since Pyramix 25th Anniversary & RTX64 3.7
- May 2019 Update (1903) is supported since Pyramix v12.0.5 HotFix
- October Update (1809)

If you run a previous Windows 10 version, Merging recommends you update it.



Windows Updates

Users wishing to apply Windows updates may refer to the Merging list of validated compatible Windows updates:

<https://confluence.merging.com/pages/viewpage.action?pageId=25755762>

Important! Before you perform a major Windows 10 update on a system already running a MassCore version, it will be important for users to remove MassCore from the MT Security panel - MassCore tab prior to performing a system update.

Users wanting to update Windows 10 to another version must follow the procedures documented here, select the appropriate document according to your current Windows 10 version.

<https://confluence.merging.com/display/PUBLICDOC/Windows+Configuration+Guide>

Once the update to the required Windows version has been completed follow this Pyramix v14.x installation Guide.

Updating from Windows 7 to Windows 10

Users performing an update from Windows 7 to Windows 10 should follow this guide

<https://confluence.merging.com/display/PUBLICDOC/Updating+Windows+7+to+Windows+10+for+MassCore>

Windows 7 is no longer officially supported as of Pyramix 14 / Ovation 10.

For Pyramix v14.x Native users

Pyramix Native users may use the Windows 10 October Update (1809), May 2019 Update (1903), November 2019 Update (1909), May 2020 Update (2004), October 2020 update(20H2), May 2021 update (21H1)

Windows 11 - IMPORTANT!

Windows 11 has not yet been tested or qualified to work with Pyramix 14.x



2 Pyramix Versions - **Compatibility and Installation Steps**

Native (ASIO on 3rd party hardware)

Compatibility: Windows 10 Professional 64-bit

Installation Steps:

- Pyramix Software Installation - *Pyramix Software Installation on page 16*
- Entering Authorization Keys - *Pyramix Software Authorization on page 18*
- Select ASIO and the correct card/device in the VS3 Control Panel
(*Start Menu > Control Panel > VS3 Control Panel*) - *Configure ASIO in the VS3 Control Panel on page 30*

Native with ASIO/WDM for RAVENNA and Horus / Hapi / Anubis

Compatibility: Windows 10 Professional 64-bit

Installation Steps:

- Install the Merging Audio device (MAD) provided with your Horus / Hapi / Anubis or available from <https://www.merging.com/support/downloads>
- Pyramix Software Installation - *Pyramix Software Installation on page 16*
- Entering Authorization Keys - *Pyramix Software Authorization on page 18*
- Select the desired network adapter in MAD Panel (*Start Menu > All Programs > Merging Technologies > Merging Audio Device Panel*) - Details in the Merging Audio Device (MAD) online documentation:
<https://confluence.merging.com/pages/viewpage.action?pageId=70221956>
- Select ASIO and the Merging Audio Device driver in the VS3 Control Panel (*Start Menu > Control Panel > VS3Control Panel*) - *Configure ASIO in the VS3 Control Panel on page 30.*

MassCore with RAVENNA and Horus / Hapi / Anubis

Compatibility: Windows 10 Professional 64-bit

Installation Steps:

- NET-MSC-GBEX1 Installation - *Installing the Merging Technologies NET-MSC-GBEX1 PCIe Ethernet Controller Card on page 23*
- Pyramix Software Installation - *Pyramix Software Installation on page 16*
- Entering Authorization Keys - *Pyramix Software Authorization on page 18*
- MassCore Installation - *MassCore Installation on page 20*
- Select MassCore with RAVENNA in the VS3 Control Panel (*Start Menu > Control Panel > VS3 Control Panel*)

Note: Merging strongly recommends users to perform a Windows Update prior to installing Pyramix v14.x



Quick Setup Checklist for systems with Horus / Hapi / Anubis

1. Shut down the system and install the MassCore NET-MSC-GBEX1 PCIe Ethernet controller card. (Card drivers are included in the Pyramix and Ovation installers.)
2. Install Google Chrome (Optional)
3. Existing users of 64-bit MassCore must uninstall the previous MassCore version from the MT Security panel application.
4. MassCore users MUST configure their BIOS settings.
Please see BIOS Settings on page 13
5. Install Pyramix v14.x or Ovation v10.x.
6. Import your v14/v10 keys in MT Security Settings.
Since Pyramix 25th HotFix 3 MassCore is entirely protected by Merging Keys.
7. Install MassCore from the MT Security panel - MassCore Tab.
8. MassCore SMP users (recommended for i7 CPU configurations and above) should launch the VS3 Control Panel and assign 2 cores (or more, up to 6) to MassCore.
(A reboot will be required.)
9. In the VS3 Control Panel ensure that RAVENNA is selected in the Hardware section.
10. Configure the Switch/Router (if present).
Please refer to the RAVENNA Network Guide.
11. Launch Pyramix.
12. You can also launch the MT Discovery application and double-click on the Horus / Hapi/ Anubis entry for browser remote access.
13. Ensure that the Horus / Hapi/ Anubis is set to the same sampling rate as Pyramix or Ovation.
14. We recommend Horus, Hapi and Anubis users to update to the latest firmware available.
See <https://www.merging.com/products/interfaces/downloads>
15. Configure I/O as required in Pyramix/Ovation mixer and Horus /Hapi/Anubis.
Please download and install the latest ANEMAN application in order to manage and monitor your AoIP devices from www.aneman.net/#download



3 For Users **Performing Upgrades**

Note: Pyramix v14 keys are required to run Pyramix v14.

Users running MassCore will need a Mass-Core version (RTX64 – 3.7.4.5222).

Pyramix

Please first uninstall any previous version of Pyramix before installing Pyramix v14.

From the Windows Control Panel select Programs and features, and remove the installed version of Pyramix.

If you are planning to update your Windows 10 version, please first uninstall the MassCore Runtime, by following steps 1 to 3 in the MassCore section below.

You can then proceed with the Windows update, by following the update procedure in the documents linked to below.

<https://confluence.merging.com/display/PUBLICDOC/Windows+Configuration+Guide>

VCube

Pyramix v14 can coexist with VCube Version 10 (Be aware of recommended configurations.)

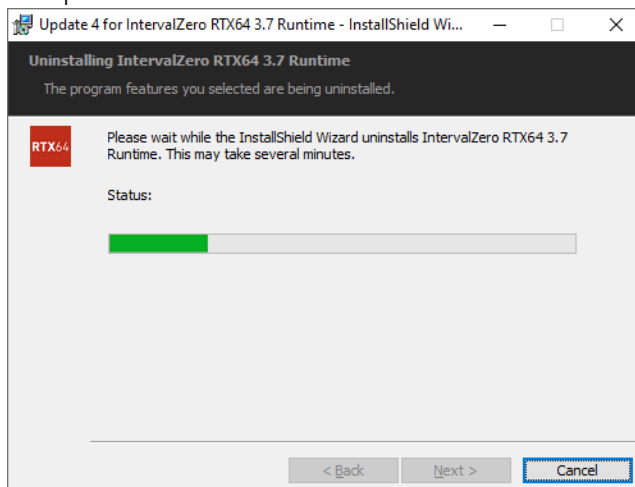
Masscore

MassCore users running Interval Zero RTX64 version prior to v3.7.4.5222 **MUST** remove the existing MassCore runtime.

Note: RTX DONGLE USERS (SSK-HUD-RTX). The SSK-HUD-RTX dongle is no longer required since Pyramix 25th HotFix 3.

Once Pyramix v14 is installed follow these steps:

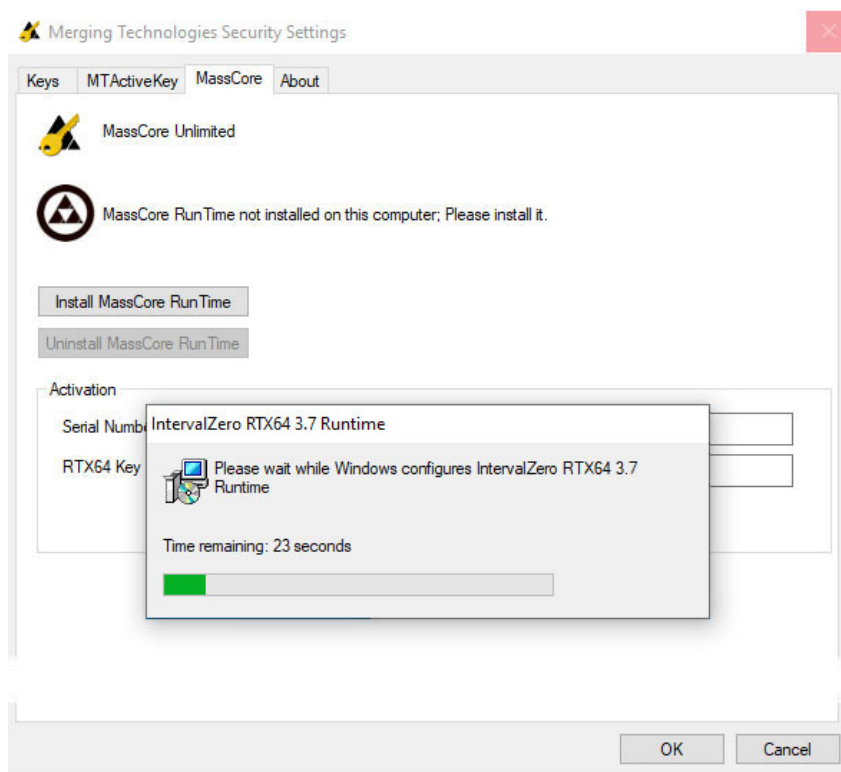
1. Launch **MT Security Settings** and select the **MassCore** Tab.
2. Choose the **Uninstall MassCore RunTime** option and reboot. (There will be one reboot.)
3. The previous Masscore RTX64 will now uninstall.



4. Once the uninstallation is finished, there is no need to reboot. Launch **MT Security Settings** and enter your **v14 keys** or confirm their presence.

Warning! If when entering your new MassCore key you experience a failure message, please contact keys@merging.com and let us know your Dongle serial number so that Merging can identify your current MassCore/RTX64 key and renew it if necessary.

5. Select the **MassCore** Tab and choose the **Install MassCore RunTime** option.

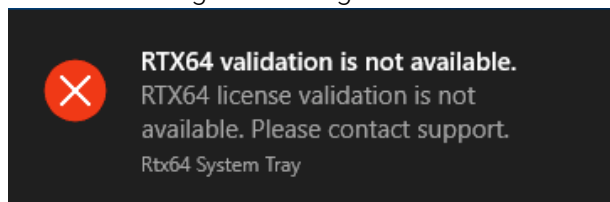


6. A RTX64 Driver approval dialog may appear. Accept it, click on **OK** to close the **MT Security Settings** panel and reboot the system.

Note:

Please note that the installation process can take some time.

At the end of the MassCore installation, users may see a popup dialog un-authorized license message. Please ignore until reboot.



7. After installation you should see an **Interval Zero** entry in **Windows Control Panel > All Control Panel Items > Programs and Features**. This should read: **Interval Zero RTX64 3.7 Runtime (Version 3.7.4.5222)**.
8. Launch the **VS3 Control Panel** and configure it for **MassCore – RAVENNA**. See: **Configure RAVENNA in the VS3 Control Panel on page 25**.



4 System Requirements

Wintel platforms tend to increase in number of cores, speed and performance at a tremendous rate. New and faster processors are released almost on a monthly basis. Therefore, we have not included suggested Motherboard or Processor specifications here.

We maintain a list of up-to-date PC configurations in the Support Section of our website at <https://www.merging.com/pages/pcconfig>

WARNING: Since Pyramix v12, Intel Core Processors prior to 4th Generation (4XXX) are no longer supported.

Please refer to our system recommendation for more details:

<https://confluence.merging.com/pages/viewpage.action?pageId=24608853>

Other Components

- Graphics Card: As of Pyramix 12, Ovation 8 and VCube 8, Merging strongly recommends using a dedicated graphic card rather than onboard graphics. Most particularly when requiring multiple display outputs, OpenGL UI plugins (Flux, Izotope,), working with video, or when your workflow places high demands on graphics. Please refer to the Pyramix PC Specifications for all details: <https://confluence.merging.com/display/PUBLICDOC/Graphic+cards+recommendations>
- Sufficient HD space and speed for your audio media files. The speed and amount of disk space required depends on sample rate, word length, number of tracks and length of program material. A typical 7200 RPM SATA drive is sufficient for 48 tracks at 48 kHz. Higher track-counts and/or higher sampling rates will require an SSD drive and/or multiple drives configured in Raid 0, 1, 10 or 5. We recommend disks should be formatted as NTFS volumes with the Windows default block sectors size. For more details, please see <https://confluence.merging.com/pages/viewpage.action?pageId=25034958>
- BD/DVD/CD-ROM combo drive or better.
- Display with a minimum resolution of 1280x1024.
- 3 button mouse

Pyramix MassCore Systems

Certified Operating System: Windows 10 Professional 64-bit.

Pyramix Native

Certified Operating System: Windows 10 Professional 64-bit.

5 PC Setup

Motherboard Drivers and Utilities

Motherboard drivers should be updated to current versions, from its manufacturer website.

Motherboard Utilities should NOT be installed.

Please refer to our Windows configuration guides for more details:

<https://confluence.merging.com/display/PUBLICDOC/Windows+Configuration+Guide>

BIOS Settings

Recommended BIOS Settings

Boot Device Control

We recommend that the UEFI boot should be disabled and set to Legacy only

Hyperthreading

Intel® Hyperthreading Technology is supported on 64-bit MassCore systems.

This setting is commonly found in Main Bios page, or under CPU configuration.

(See the motherboard manual for further details).

- MassCore SMP users: Merging Recommends that Hyperthreading is enabled to benefit fully from the real-time engine power, VS3 support and the MassCore multithreaded engine.
- MassCore Non-SMP users: Will gain some of these benefits by not enabling Hyperthreading, so that a full single Core is dedicated to MassCore.
- For further information refer to the Pyramix User Manual chapter MassCore & VST Core Allocation.
- Pyramix Native: We recommend that Hyperthreading is enabled.

Other Settings

The following features can create MassCore overloads (blinking red MSC).

Intel® SpeedStep Technology (also known as *Enhanced Intel® SpeedStep*), *Intel® TurboBoost Technology* as well as *CPU C States* (or *Intel® C-State*) features must be disabled in the BIOS.

These settings are commonly found in BIOS Power options or CPU Configuration.

Overclocking is not supported.

Secure Boot feature is not supported by the MassCore engine.

Configuration Guides

Windows 10 users should refer to the Merging Windows 10 Configuration Guide:

<https://confluence.merging.com/display/PUBLICDOC/Windows+10+Configuration>

Merging has a number of specific configuration guides based on the validated hardware platforms available at

<https://confluence.merging.com/display/PUBLICDOC/Validated+hardware+installation+guides>



Display Settings

Pyramix requires a minimum display resolution of 1280x1024 in 256 colors which MUST be set to small fonts mode.

A Merging Windows configuration guide is available with recommendations here:

<https://confluence.merging.com/display/PUBLICDOC/Windows+Configuration+Guide>

Please type advanced system settings in Windows search field (next to Windows Start button), and select the *Advanced* tab > *Performance Settings* to open the Performance Options window. Choose the *Visual Effects* Tab.

Disable the following settings by unticking the boxes to prevent MassCore peaks:

- Animate Windows when minimizing and maximizing – disable
- Animations in the taskbar and Start Menu – disable
- Enable Peek – disable
- Fade or slide menus into view – disable
- Fade or slide ToolTips into view – disable
- Save taskbar thumbnail previews – disable
- Show thumbnails instead of icons
- Show translucent selection rectangle – disable
- Show window content while dragging – disable
- Slide open Combo boxes – disable

● Custom:

<input checked="" type="checkbox"/>	Animate controls and elements inside windows
<input type="checkbox"/>	Animate windows when minimizing and maximizing
<input type="checkbox"/>	Animations in the taskbar
<input type="checkbox"/>	Enable Peek
<input type="checkbox"/>	Fade or slide menus into view
<input type="checkbox"/>	Fade or slide ToolTips into view
<input checked="" type="checkbox"/>	Fade out menu items after clicking
<input type="checkbox"/>	Save taskbar thumbnail previews
<input checked="" type="checkbox"/>	Show shadows under mouse pointer
<input checked="" type="checkbox"/>	Show shadows under windows
<input type="checkbox"/>	Show thumbnails instead of icons
<input type="checkbox"/>	Show translucent selection rectangle
<input type="checkbox"/>	Show window contents while dragging
<input type="checkbox"/>	Slide open combo boxes
<input checked="" type="checkbox"/>	Smooth edges of screen fonts
<input checked="" type="checkbox"/>	Smooth-scroll list boxes
<input checked="" type="checkbox"/>	Use drop shadows for icon labels on the desktop

Power Management

As with other Digital Audio Workstations and Non-Linear Editors, we recommend setting the PC to the High-Performance Power management scheme or RTX64-Recommended (MassCore Users).

Pyramix / Ovation are NOT designed to support Standby modes.



Drive Indexing

In the interests of better performance, we recommend turning Indexing OFF for all Data drives (System drive indexing should be left ON)

Other Applications

Like all Digital Audio Workstations, Pyramix works best when there are no other unnecessary applications or services running.

Video in Timeline / PyraCube

As of Pyramix 12, Ovation 8 and VCube 8, Merging strongly recommends using a dedicated graphic card rather than onboard graphics.

In a Pyramix Native system video performance depends principally on the system configuration.

Video Hardware

Merging supports Blackmagic design Video Cards thru the DeckLink SDK.

This covers the Decklink product lines.

Note:

The DeckLink 8K cards are not supported above 4K DCI / 25 fps.

The DeckLink Studio monitor is known to be working but has no Video reference to ensure genlock.

Merging has certified its applications under Blackmagic Design versions 10.x, 11.4, 11.5 and 12.x.

Please download and install from <https://www.blackmagicdesign.com/support>

AJA Video cards are no longer supported.

ADR/Ovation Keyboards

Please refer to the following page for installation information:

<https://confluence.merging.com/display/PUBLICDOC/Pyramix+ADR+and+Ovation+keyboard+install+guide>



6 Pyramix Software Installation

Important! If you have not already done so, before installing the Merging Technologies software for the first time OR as an update please run Windows Update and accept any updates marked as Important. Note that this can take a considerable time. (Over an hour in some cases.) This is a Microsoft problem.

Note: You must have full Administrator Access to install Pyramix.

Installation Overview

Note: If you have purchased hardware options such as the NET-MS-GBEX1 PCIe Ethernet card, the Sync Board and or a Blackmagic video card, please install these following the instructions in the accompanying documentation.

The drivers for all of these except Blackmagic cards, ADR Keyboard and SeaLevel GPIOs are installed automatically with the Pyramix software.

SeaLevel GPIO's installation

<https://confluence.merging.com/pages/viewpage.action?pageId=15139174>

Blackmagic video card drivers have to be downloaded from the Blackmagic website and installed separately. Merging has certified its applications under Blackmagic Design versions 10.x, 11.4 and 11.5. Please download and install from <https://www.blackmagicdesign.com/support>

ADR/Ovation keyboard

<https://confluence.merging.com/display/PUBLICDOC/Pyramix+ADR+and+Ovation+keyboard+install+guide>

Installer

The Pyramix software uses an automated installer wizard which will install all necessary prerequisites.

Installing Ovation will also install Pyramix.

Note: The security dongle must be in place and the security keys entered before attempting to launch the software, but not required during the installation process.

Flux VS3/V3 plug-ins

Download the Flux Center application in order to install the Flux VS3 plug-ins:

<https://www.fluxhome.com/download>

More details here:

<https://confluence.merging.com/display/PUBLICDOC/Flux+Download+Center>

Ensure you have valid Merging Flux v3 Keys in order to run these Flux VS3 plug-ins.

VB VS3 plug-ins

VB VS3 plug-ins have a stand-alone installer. Download and run the VB Plug-in - VS3 installer after installing Pyramix or Ovation.

Run the installer and reboot the system.

<https://confluence.merging.com/display/PUBLICDOC/VB+Plugins+%28VS3%29+standalone+installer>



Standalone Album Publishing application

The Standalone Album Publishing application is included since Pyramix v11.1 and allows several instances to be run concurrently.



Independent Settings may be applied for each instance. (Via initial Settings changes.)

7 Running the **Installer**

Note: If you have a SafeNet dongle please remove this before installing Pyramix and replace it after installation is complete.

Once the NET-MSC-GBEX1 Ethernet card has been properly installed, you can now install the Pyramix software.

To install the Pyramix Virtual Studio software, please download from <https://www.merging.com/support/downloads> (registration required), or insert the USB memory stick if have an installation pack. The installation program will auto-start on a PC where auto-start is configured on. Otherwise, double-click on the USB memory stick icon.

Please follow the automatic installation procedure accepting the option to install drivers and re-boot your PC once setup is complete.

WARNING: Certain computers do not properly shut down despite the reboot command issued by the installer but only perform a log off. In this case, please activate a full shut down manually.

8 Pyramix Software **Authorization**

The Pyramix Virtual Studio software and its various software options are protected by an authorization key mechanism which uses a unique registration key number generated by Merging Technologies. Based on purchased software components, this key is unique to your security dongle, your Company Name and your User name.

If you did not receive this key, have lost it or would like to change the user and/or company name, please contact your Merging Sales Partner with your SafeNet dongle serial #, your User Name, your Company Name and the list of purchased software components.

Usually, a key can be issued within one business day, after the verification of your personal data has been completed.

Safenet Dongle - Entering your Key(s)

After the Pyramix installation process you will have to enter your keys by choosing one of the following procedures:

1. Double-click the file *YourPersonalKeyXXXXX.mtk*. This is attached to the email containing your Key(s).
2. Open the **MT Security Settings Control Panel** (Windows Start > Control Panel > MT Security Settings), click the Import Key button and browse for your key file named *YourPersonalKeyXXXXX.mtk*
3. Open the **MT Security Settings Control Panel** (as above), click the *Enter Key* button and type your User Name, Company Name and Key then click OK. Repeat this step for each Keys listed in the email.

Changing or re-entering a Key

Should you need to subsequently change or re-enter a Key, follow the appropriate option above.

QLM Cloud based security- Entering your Key(s)

For users needing to run Pyramix, Ovation or VCube without a Merging SafeNet dongle, Cloud based security is available.

Note: SafeNet keys cannot be transferred to QLM security for a chosen release. This process can only be undertaken at the upgrade stage.

For further information about cloud security please see the following online documentation:

Cloud Licenses activation/deactivation

<https://confluence.merging.com/pages/viewpage.action?pagelId=65437899>

QLM SelfHelp Tool

<https://confluence.merging.com/pages/viewpage.action?pagelId=65437985>

MT Security troubleshooting

<https://confluence.merging.com/pages/viewpage.action?pagelId=65437961>

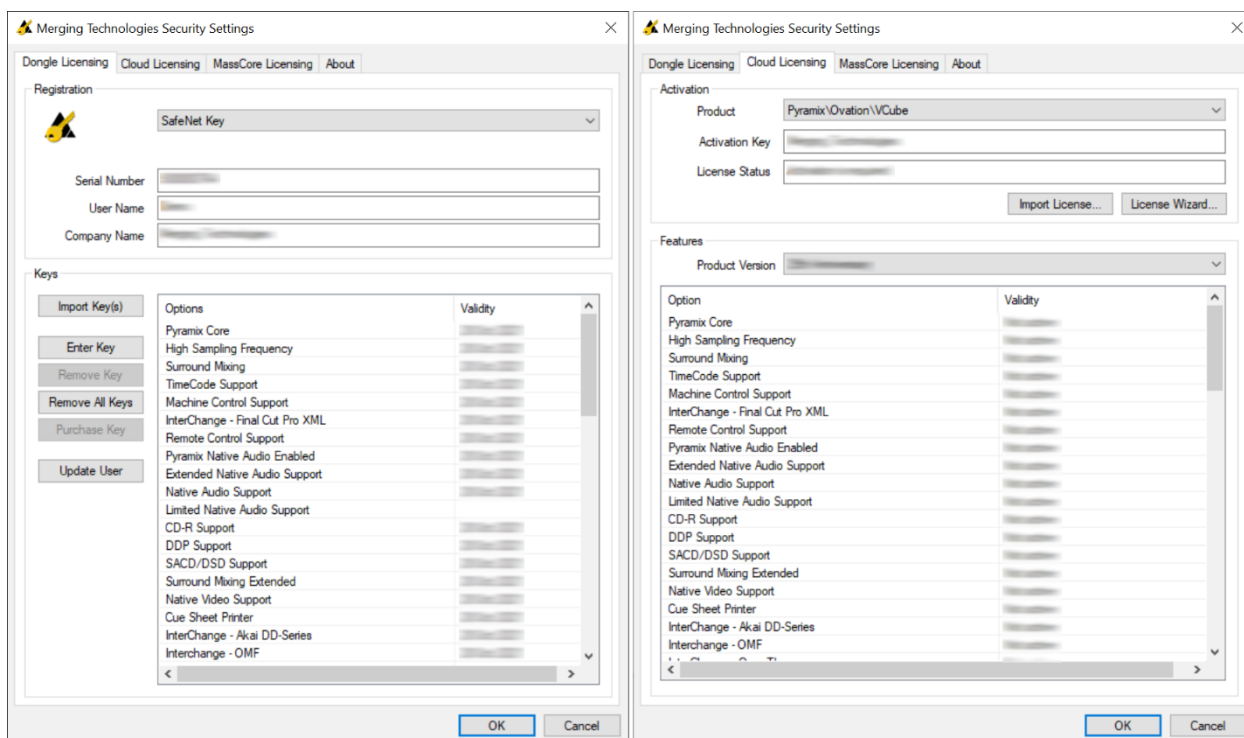
Evaluation Mode

If started without a valid registration key, the software will recognize that no valid key is available and will start in “evaluation” mode, which only allows for basic operation of the software as follows:

- Limited to 2 channels of I/O on host soundcard (ASIO)
- No Project > Save function
- Tone is added to new recordings
- All optional extra cost features are deactivated
- All editing functions, playback, file type conversions etc. are fully functional.

Keys

At any time, you can check the serial number of your Security dongle and check the software options enabled in your system in the MT Security application.



9 MassCore™ Installation



System Requirements

A quad core Intel processor is the minimum requirement.

BIOS and Windows should be configured following our recommendations for the MassCore engine to run properly.

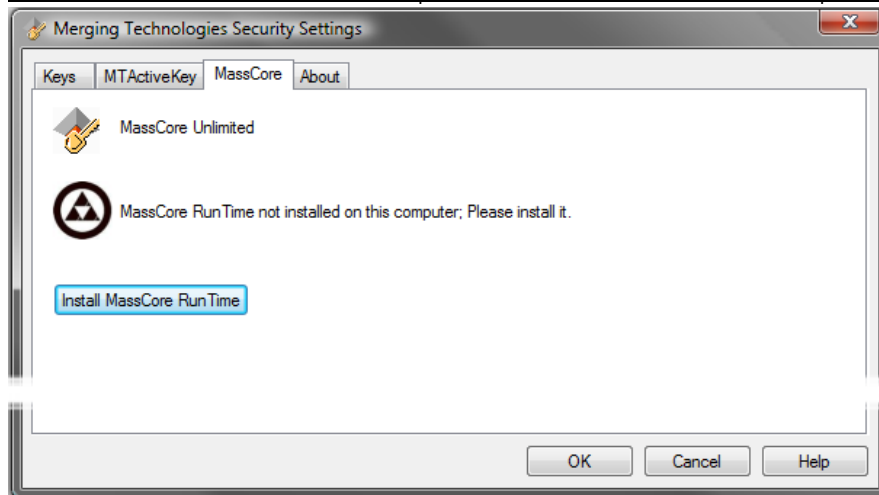
<https://confluence.merging.com/display/PUBLICDOC/Windows+10+Configuration>

Conditions

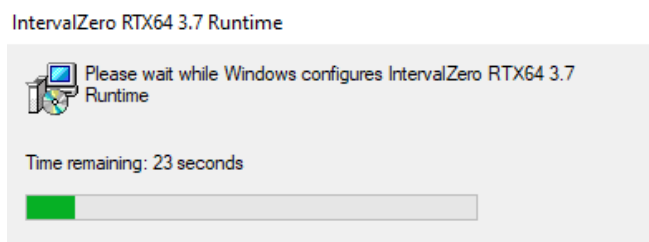
- You MUST be logged in as an Administrator to install MassCore.
Note: You do not need to be logged in as an Administrator to RUN Pyramix or Ovation with MassCore, just to install it.
- You must have a NET-MSC-GBEX1-Ethernet card in your system.
- You must have the MassCore (Base) and MassCore 64bit keys, and an RTX 64 key in order to proceed with the installation.
Please contact your Merging Technologies Sales Partner if you do not have these options but want to use MassCore.

MassCore Installation

1. Install Pyramix v14.
2. Launch **MT Security Settings** and enter your v14 keys (including the new MassCore key) or confirm their presence.
Warning! If when entering your new MassCore key you experience a failure message, please contact keys@merging.com and let us know your Dongle serial number so that Merging can identify your current MassCore/RTX64 key and renew it if necessary.
3. Select the *MassCore* Tab.
4. Press the **Install MassCore Run Time** button (will only be enabled if the MassCore base, MassCore 64bit keys and a valid RTX64 license code are present.).
Please note that the installation process can take some time to proceed.



- Click **Install**. The installation progress window will appear:



- When the install completes, click on **OK** in the Merging Technologies Security Settings dialog to close it.
- Restart System after the install, please reboot the computer, on the MassCore boot line.

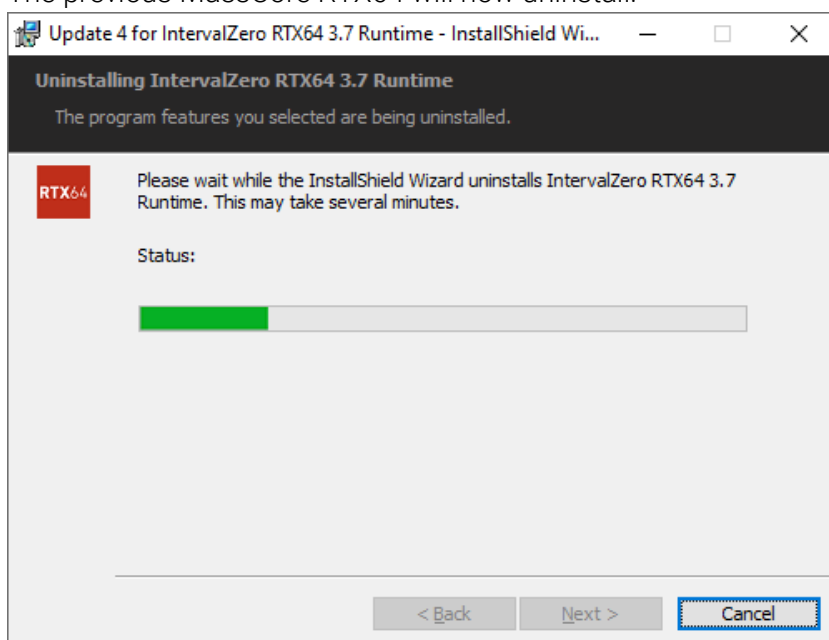
MassCore Installation - Upgrade

If you are planning to update your Windows 10 version, please first uninstall the MassCore Runtime, by following steps 1 to 6 in the MassCore section below.

You can then proceed with the Windows update, by following the update procedure in the documents linked to below.

<https://confluence.merging.com/display/PUBLICDOC/Windows+Configuration+Guide>

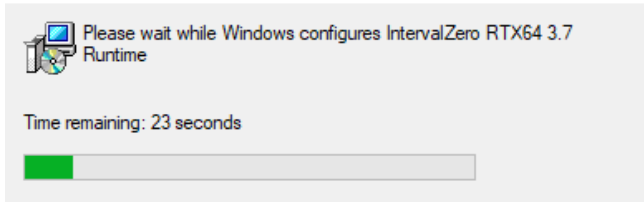
- Install Pyramix v14.
- Launch **MT Security Settings** and enter your v14 keys (including the new MassCore key) or confirm their presence.
- Select the *MassCore* Tab.
- Press the **Uninstall MassCore Run Time** button, press **OK** to close the MT Security panel and reboot the computer.
- Reboot selecting the NON-MassCore Windows Boot line.
- The previous MassCore RTX64 will now uninstall:





7. Once the uninstallation is finished, there is no need to reboot. Launch **MT Security Settings** and select the *MassCore* Tab.
8. Press the **Install MassCore RunTime** button (will only be enabled if the MassCore base, MassCore 64bit keys and a valid RTX64 license code are present.)
Please note that the installation process can take some time to proceed.
9. Click **Install**. The installation progress window will appear:

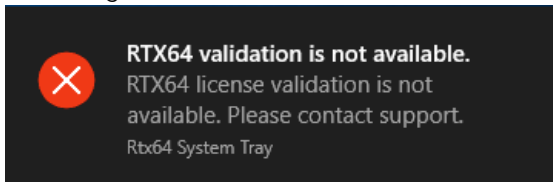
IntervalZero RTX64 3.7 Runtime



10. When the install completes, click on **OK** in the Merging Technologies Security Settings dialog to close it.
11. Restart System after the install, please reboot the computer, on the MassCore boot line.

Notes:

- Users installing MassCore may see a popup dialog un-authorized license message. Please ignore until reboot.



- After installation you should see an Interval Zero entry in Windows Control Panel > All Control Panel Items > Programs and Features.
This should read: Interval Zero RTX64 3.7 Runtime (Version 3.7.4.5222).

10 MassCore – RAVENNA

Certified Operating Systems (OS) for RAVENNA

Pyramix v14 MassCore in RAVENNA mode is certified under Windows 10 Professional (64-bit versions).

System Requirements

We maintain a list of up-to-date PC configurations in the Support Section of our website at:

<https://www.merging.com/pages/pconfig>

Please refer to the MassCore-RAVENNA recommendations (Quad-Core is the minimum requirement)

Required Hardware

The Merging Technologies NET-MSC-GBEX1 PCIe Ethernet controller card is required for MassCore – RAVENNA

Installing the Merging Technologies NET-MSC-GBEX1 PCIe Ethernet Controller Card

The NET-MSC-GBEX1 PCIe card can be installed in your computer before or after installing Pyramix v14.

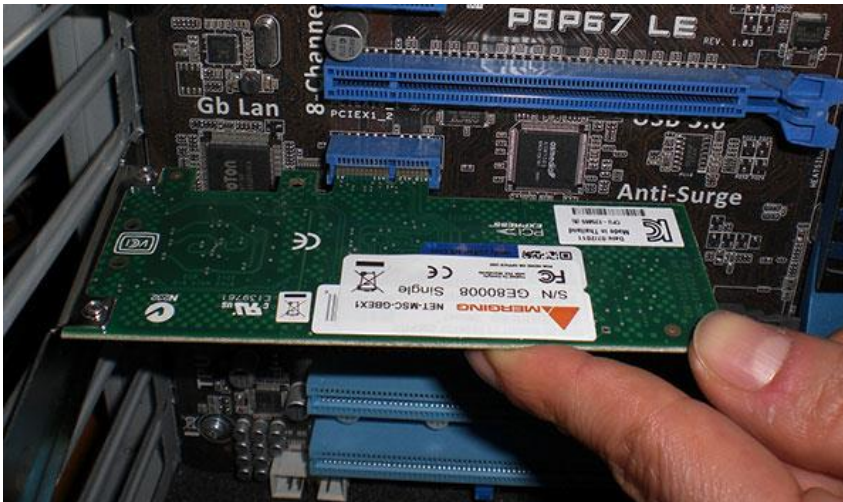


Procedure

1. Power down your PC and switch it off at the wall. Remove the screws securing the top or side of the case and carefully slide off the panel.
2. An anti-static wristband is sensible precaution whenever working with sensitive electrical equipment. Keeping one hand on a metal part of the case will have the same effect, though you may need both hands when installing certain items of hardware.
3. Locate an empty PCIe slot and remove the metal backing plate by removing the screw holding it in place and carefully sliding it up and out. In some cases, there are no backing plates and you will need to remove a length of metal instead. Do this using a flat-blade screwdriver and/or pliers, taking care to avoid any sharp edges left behind.



4. Remove the NET-MSC-GBEX1 card from its protective anti-static envelope and align it with the vacant PCIe slot as shown below.



5. Push down, gently at first, ensuring you have the pins aligned correctly with the slot, and then apply more pressure to slot the card fully home.
6. Use the screw which was used to retain the backing plate to secure the card in place and check that the card sits comfortably.
7. Finally, replace the case cover(s) and switch the machine back on at the socket.
8. At the next power up and boot Windows will discover the Merging Ethernet PCIe card. Pyramix v14 can now be installed.

Required Software

In order to operate Pyramix with RAVENNA and Horus / Hapi / Anubis, Pyramix must be installed. The Pyramix v14 installer includes Apple Bonjour.

As of Pyramix v11.0.7 HotFix the installer no longer includes the ANEMAN application which now comes as a separate installer. Please download and install the latest ANEMAN in order to manage and monitor your AoIP devices from www.aneman.net/#download

Enter your Pyramix keys

Launch MT Security settings and enter your Pyramix v14 keys. Please see **Entering your Key(s)** on page 18.

Note: v14 keys are required and MassCore requires an RTX64 key in order to run RTX64.

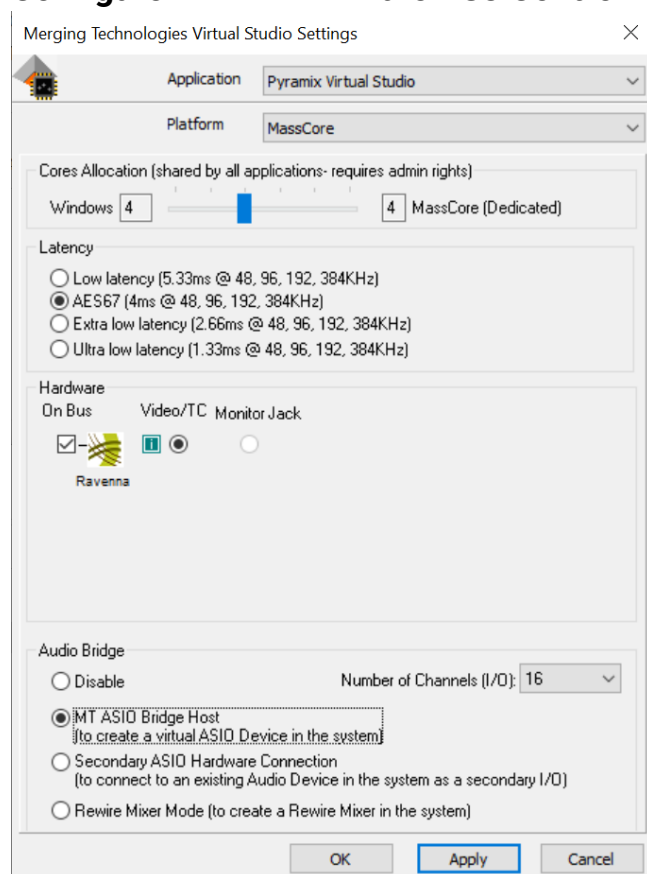
Install MassCore

Please see **MassCore Installation** on page 20

Notes:

- A valid MassCore (Base) key and a valid MassCore 64-bit key are mandatory. Please make sure that you are in possession of a Safenet dongle or Cloud keys, with valid keys in order to operate Pyramix in MassCore-RAVENNA mode.
- The NET-MSC-GBEX1 Ethernet card requires MassCore in order to function.
- The NET-MSC-GBEX1 Ethernet card cannot be used for Native – ASIO RAVENNA.

Configure RAVENNA in the VS3 Control Panel



1. Launch the **VS3 Control Panel** (Start: All Programs > Merging Technologies > VS3 Runtime > VS3 Control Panel)
2. Select **Platform: MassCore**
3. **Cores Allocation:** Leave on the default setting for now.
4. For now, leave **Latency** on the default setting **AES67**.
5. Select **Hardware: On Bus** as RAVENNA (box ticked)
6. **Audio Bridge:** Set as required (see Pyramix User Manual for details)
7. Click on the **OK** button.
8. When the VS3 panel **Do you want to save MassCore configuration?** dialog box appears, click on **OK**
9. The VS3 control panel will close.

Before First Launch

Before launching Pyramix v14, you must ensure that a **PTP Master*** is present on your RAVENNA/AES67 network.

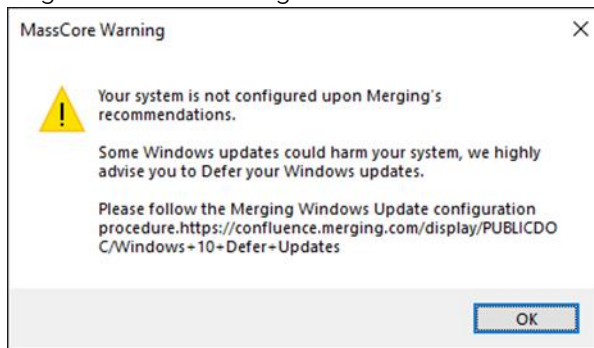
Merging Technologies recommends using its **Horus**, **Hapi** or **Anubis** converters as PTP Master.

* *The Precision Time Protocol (PTP) is a protocol used to synchronize clocks throughout a computer network.*



Notes:

- RAVENNA mode supports all four Latency modes. (VS3 Control Panel)
To enable RAVENNA I/O connections please refer to Aneman and its user manual.
- Merging Technologies highly recommend Low Latency or AES67 modes for optimal performance. The Extra and Ultra latency modes should only be used on Merging Turnkey systems or approved configurations since these modes can be very demanding on performance, depending on system configuration and user workflow.
- Horus / Hapi / Anubis users should refer to their respective User Manual for configuration set-up with Pyramix.
- At the first Pyramix launch if your Windows update policy is not configured correctly, you might see the message below:



More details on the procedure to follow are available here:

<https://confluence.merging.com/display/PUBLICDOC/Windows+10+Defer+Updates>

Troubleshooting and tips

RAVENNA: Horus / Hapi / Anubis & Network configuration

Merging recommend that the Ethernet MassCore card and Horus / Hapi / Anubis are configured to obtain an IP address automatically.

Setting Horus / Hapi / Anubis and Network Card to Obtain IP Addresses Automatically

Network Card

1. Open *Network Sharing Center* in the *Windows Control Panel*
2. Right-click on the *MassCore Ethernet card NET-MS-C-GBEX1* and open *Properties*.
3. Select **Internet Protocol Version 4, TCP/IPv4** (which is the only one activated) and click on *Properties*.
4. Select the **Obtain an IP address automatically** option.
5. Click on **OK** in each dialog to accept the changes and close the dialogs.

Horus / Hapi

1. Open the *Horus / Hapi Setup >Advanced > Network* page
2. In the *IP address* section select **Auto**



Anubis

1. Open the Anubis *Home* page (long push on Merging triangle logo)
2. Enter the *Settings > General* menu
3. Browse to the *Network* section.
4. Set Obtain an IP address setting to **Auto**.

Setting Fixed IP addresses

Note: For users running firmware prior to [3.9.3b38957](#), setting a Fixed IP is not recommended due to the fact that the Horus / Hapi Maintenance mode will be only be effective in Auto IP mode. This is mandatory for Firmware updates.

1. First, check the IP address of the Horus / Hapi device under *Setup > Network*.
For Anubis, open the *Settings > General* page and browse to the *Network* section.
To be able to see each other, the Merging Technologies Network card and Horus / Hapi / Anubis must be in the same range of addresses. (Example 192.168.xxx.xx).
2. The IP address of the MassCore Network card can be changed in *Windows Control Panel > Network Sharing Center > Change Adapter Settings*.
Right click on the *MassCore Ethernet card NET-MSC-GBEX1* and open *Properties*.
Select **Internet Protocol Version 4, TCP/IPv4** (which is the only one activated) and click on *Properties*.
Switch to **Use the following IP address** and enter an IP address that is in the same range as the Horus / Hapi / Anubis IP address. The *Subnet Mask* should be added automatically.
Click on **OK** in each dialog to accept the changes and close the dialogs.

Windows Firewall and UAC

If not configured correctly, Windows Firewall can block communication between MassCore and Horus / Hapi / Anubis.

Firewall

By default, the Windows Firewall should be automatically configured by the installer, but in some special cases, it might need to be turned off.

- Open the *Windows Control Panel > Windows Defender Firewall*.
- Click on *Change notification settings*, and set the *Public network settings* to **Turn off Windows Defender Firewall**.

User Account Control

- Open the *Windows Control Panel > User Accounts* section and click on **Change User Account Control Settings**.
- Move the slider down to **Never Notify**.



Antivirus

- Merging also recommends that any Antivirus software is properly configured so as to not interfere with the DAW. See this page for further details:
<https://confluence.merging.com/display/PUBLICDOC/Antivirus+and+Merging+Technologies+Softwares>



11 Native - **ASIO/WDM**

Certified Operating Systems (OS) for RAVENNA

Pyramix v14 in ASIO Native mode is certified under Windows 10 Professional (64-bit versions).

System Requirements

We maintain a list of up-to-date PC configurations in the Support Section of our website at:

<https://www.merging.com/pages/pconfig>

Please refer to the Native recommendations.

Required Hardware

An ASIO device is required to run Pyramix in Native ASIO mode.

A Gigabit Ethernet controller card is required for RAVENNA/AES67 ASIO Native mode.

Installing the ASIO driver

Merging Audio Device driver - RAVENNA/AES67

Install the Merging Audio Device driver, by following the online instructions:

<https://confluence.merging.com/pages/viewpage.action?pageId=63635976>

Note: At least one Merging technologies RAVENNA/AES67 device must be present on the network for the ASIO clocking.

The MAD replaces the previous RAVENNA ASIO Driver.

Third-party ASIO device

Download and install your third-party ASIO device driver according to its manufacturer instructions.

Note: The driver must be 64-bit compatible.

Configure ASIO in the VS3 Control Panel



1. Launch the **VS3 Control Panel** (Start: All Programs > Merging Technologies > VS3 Runtime > VS3 Control Panel)
2. Select **Platform: Native – ASIO**
3. **I/O Selection - Driver name:** Select your ASIO device from the drop-down list.
4. **Audio Bridge:** Set as required (see Pyramix User Manual for details)
5. Click on the **OK** button.
6. When the VS3 panel **Do you want to save ASIO configuration?** dialog box appears, click on **OK**.
7. The VS3 control panel will close.

The Inputs and Outputs present on the ASIO device will now be available in Pyramix.

12 First launch

Important! After installation has been completed, please reboot the PC before attempting to launch Pyramix Virtual Studio.

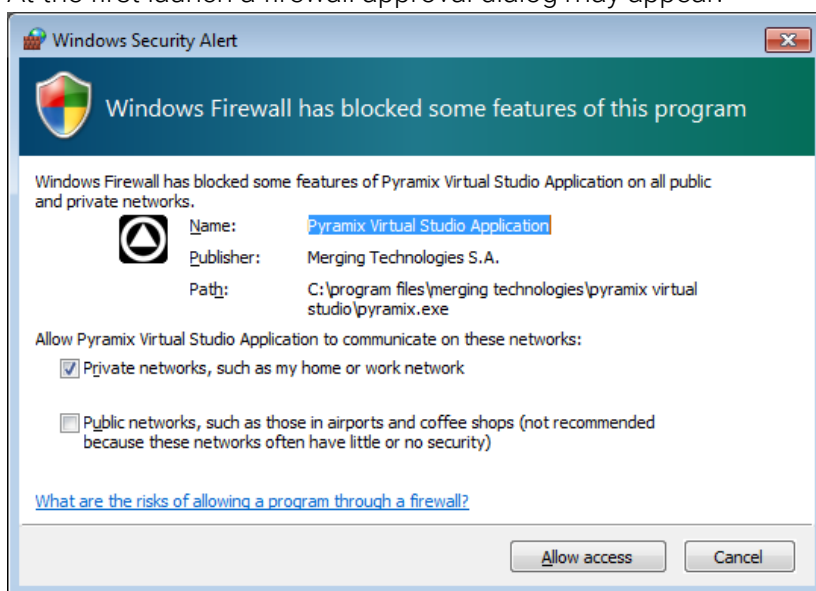
The VS3 control panel application must be properly configured before attempting to launch Pyramix Virtual Studio.

Launch Pyramix

Double-click on the Pyramix Virtual Studio desktop icon to launch Pyramix.

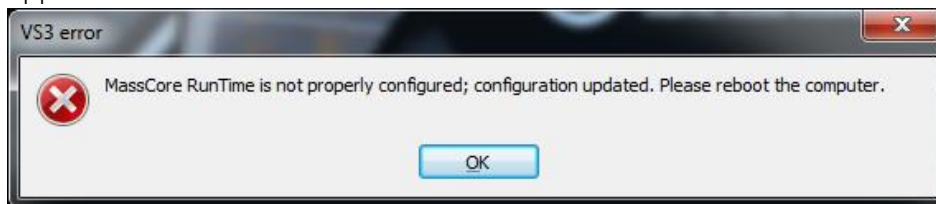
Notes:

- At the first launch a firewall approval dialog may appear:



Click on **Allow access** for both network types, since this is necessary to ensure correct Audio Connections and VT2 (Virtual Transport 2) functioning.

- At the first Pyramix launch and or after installing MassCore the following alert box may appear.

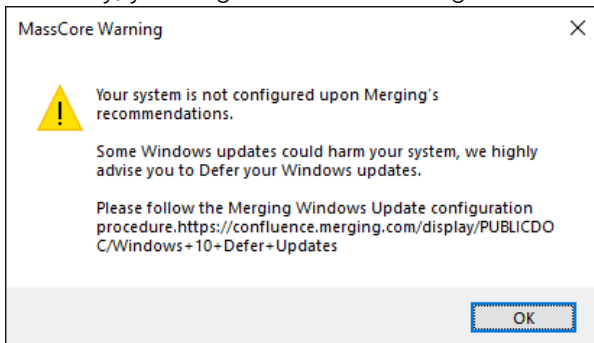


If it does, please reboot the computer one more time.

If after a computer restart this error message still appears, please follow the instructions in our knowledge base:

<https://confluence.merging.com/display/PUBLICDOC/MassCore+Runtime+is+not+properly+configured+error+message>

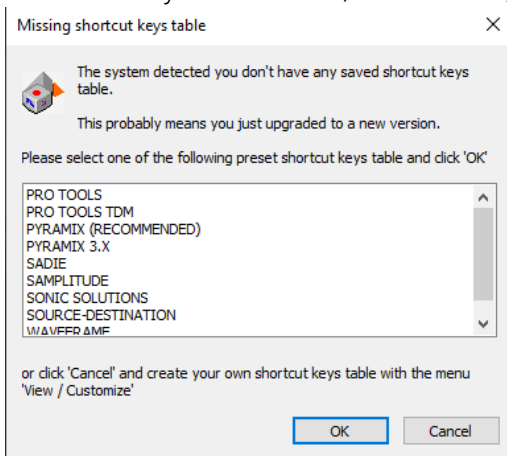
- At the first Pyramix MassCore launch if your Windows update policy is not configured correctly, you might see the message below:



More details on the procedure to follow are available here:

<https://confluence.merging.com/display/PUBLICDOC/Windows+10+Defer+Updates>

- At the first Pyramix launch, the following Missing shortcut keys table dialog will appear:



Please select your preferred keyboard shortcuts table.

Merging recommends you choose *Pyramix (Recommended)*.

More details can be found in the Pyramix User Manual.

Documentation

The Pyramix User Manual is available from within the application and may be accessed via the Help menu or by pressing F1, or online at

<https://www.merging.com/support/downloads#pyramix>



13 Troubleshooting

Please visit regularly www.merging.com
And for the latest Troubleshooting Guide and FAQ sections
<https://confluence.merging.com/>

14 Lost or Stolen **Merging Technologies Security Keys**

(SafeNet USB Dongles)

The Merging USB Key carries all the value of your Merging software and the software license authorization to use it. Please ensure you do not lose the USB key as Merging Technologies cannot be held responsible if this is lost or stolen.

If your USB key is lost or stolen then please make a claim on your insurance in the usual way just as you would for any other item you own. Merging will be happy to confirm the details and value of the software license and USB key to your insurance company. If your USB key is lost or stolen and a different user should attempt to register for this key, Merging will notify you and the authorities in your country that an attempt has been made to register this stolen item.

If your USB key should become defective or is broken, please ensure this key is returned to Merging after requesting and RMA (Return Merchandise Authorization.) Only after the receipt of this key in the Merging Offices will it be determined if it may be exchanged under warranty free-of-charge, or if the damage is outside the warranty scope, in which case only a modest fee to replace it with a new key will be charged (and not the entire value of the software.)



15 Contacting **Merging Technologies**

International Office

Merging Technologies S.A.
Le Verney 4
CH-1070 Puidoux
Switzerland
Phone: +41 21 946 0444

UK

Merging UK (Emerging Ltd)
23 Campbell Court
Campbell Road
Bramley
Hampshire
RG26 5EG
UK
Phone: +44 (0) 118 402 5090
Fax: +44 (0) 870 123 1747
Email: sales@merginguk.com

USA

Merging USA (Independent Audio)
43 Deerfield Road
Portland,
ME 04101-1805
United States of America
Phone: +1 (207) 773 2424
Fax: +1 (207) 773 2422

For all documentation inquiries or suggestions for improvement:

<https://www.merging.com>

