



Ovation Release Notes

Installation

Please consult the Installation Guide located on the Ovation Installation Media (USB Memory card) for details on the hardware and software installation procedure and Authorization Key registration process.

RAVENNA users will have to install the NET-MS-C-GBEX1 PCIe Ethernet card provided by Merging Technologies. TURN YOUR COMPUTER OFF (shut down then switch the power off). Next plug the NET-MS-C-GBEX1 card into one of the PCI-Express bus slots on your computer and turn the power back on. The NET-MS-C-GBEX1 card will only be operational once the MassCore runtime is installed. Refer to the Pyramix Installation Guide for more details.

- To install the Ovation software insert the Ovation Installation Media - the installation program should auto-start.
- To install MassCore launch the MT Security Settings, go to the MassCore page and install the MassCore RunTime (a MassCore base key is required along with MassCore 64bit and a RTX64 3.0 key). Refer to installation guide for more details.
- Warning: Make sure that the Windows 10 version you are installing onto is supported by Ovation, as often updates can break the compatibility.
All details in the separate Ovation installation guide.

Updates

Please check our Web site <http://www.merging.com> periodically for information, patches and updates.

Ovation v7 INSTALLER INFORMATION:

Ovation v7 is compatible with the following Operating Systems

- Windows 7 Professional (64bit): MassCore/RAVENNA, Native & Native/RAVENNA ASIO
- Windows 10 Professional (64bit): MassCore/RAVENNA, Native & Native/RAVENNA ASIO

Note: Ovation v7.1 is supported under the Windows 10 updates;

- Anniversary (1607)
- Creator (1703)
- Fall Creator (1709)
- Spring Creator (1803) as of Ovation 7.1 Beta 2 / MassCore RTX64 3.4.0
As well as the latest Meltdown and Spectre Windows updates.

Users that want to apply Windows updates may refer to the Merging Compatible Windows updates <https://confluence.merging.com/pages/viewpage.action?pageId=25755762>

Ovation v7.1 installation notes

- **Ovation v7.1 come with a new version or MassCore RTX64 v3.4.0.4377 (as of v7.1. beta2)**
- The Ovation v7 installer comes only as a 64bit version (64bit OS)
- Before you perform a Windows 10 update to Windows Fall Creator (1709) or Spring Creator (1803) on a system already running a MassCore version it will be important for users to remove MassCore from the MT Security MassCore tab prior to performing a system update. Details below

*Note #1: We highly recommend users to defer the Windows updates, so that it does not harm your system [here for details on how to defer updates](#)
Windows 10 users should never update to Beta Windows version or major new updates before making sure they are supported by Merging.*

Note #2: Ovation v7.1 MassCore is not supported under Windows 10 – update 1809

Note #3:

Users wanting to update to Windows Creator must follow the procedure document <https://confluence.merging.com/display/PUBLICDOC/Windows+10+Update+from+Fall+Creator+to+Spring+Creator>

Users that want to apply Windows updates may refer to the Merging Compatible Windows updates [here](#)

Once updated to Windows Creator they can follow the Ovation v7.1 and MassCore installation.

- SSK-HUD-RTX owners can have both an Ovation v6 MassCore key and Ovation v7 MassCore Key stored on their dongle and go from a system to the other using their SSK-HUD-RTX
- SSK-HUD-RTX owners should be aware that the Hasp driver 7.80 is not compatible with MassCore/RTX64. Refer to the procedure here: <https://confluence.merging.com/pages/viewpage.action?pageId=27852814>
- Ovation v7 keys are required.

Native Installation Notes:

- Ovation v7.1 can be installed on either Windows 7– 64bit or Windows 10 – 64 bit
- The Windows 10 Spring Creator update (1803) is supported as of Ovation v7.1 Beta2 previous Ovation versions were not supporting the Fall Creator update (1709)
- It is necessary to remove the previous Pyramix version, if there is one, from the Windows Programs and Features, and then reboot your system before installing Pyramix v11.
- Ovation v7 keys are required.
- Follow the Ovation v7.1 Installation Guide for all details
- **Important:** As of v7.1 the ANEMAN installer is no longer included in the Ovation Installer. In order to properly manage your audio network, it is highly recommended that you download and install the latest version of ANEMAN from <http://www.merging.com/products/aneman/download>

MassCore Installation Notes:

- Refer to the Ovation v7.1 Installation Guide for installation procedure and details on the specific BIOS settings and system configuration.
- Ovation v7.1 (as of Beta2) uses a new MassCore version RTX64 v3.4.0
- Ovation v7.1 MassCore users need a RTX64 3.0 key in order to Install and run MassCore. See with your Merging Sales Partners.
- It is necessary to remove the previous Pyramix version, if there is one, from the Windows Programs and Features, and then reboot your system before installing Ovation v7.1. **Unless you are planning to update to; Windows 10 Creator (1703) or Fall Creator (1709) or Spring Creator (1803), when it is recommended to first remove MassCore before performing the update. In such case follow the procedure document**
<https://confluence.merging.com/display/PUBLICDOC/Windows+10+Update+from+Fall+Creat+or+to+Spring+Creator>
- After installing Ovation 7.1 MassCore users might need to uninstall their previous MassCore from the MT Security setting, MassCore Tab, depending on the previous Pyramix version you were running. If there is an older version present you will be warned and required to reboot before updating to the latest version.
- If your Pyramix system never had a MassCore version before, users will have to install the new MassCore version from the MT Security Settings > MassCore tab. A valid MassCore RTX64 -3.0 key is mandatory.
- Users running MassCore 64bit will not be able to move their license to another system (or the same system after a Windows re-installation) unless first making this demand through Merging keys@merging.com. Please justify the reason of your system migration or reinstallation as the RTX64 key is not meant to be frequently renewed. If Merging cannot follow up in a quickly enough (in case of emergency or during weekends) then please contact the Interval Zero (RTX) Sales team sales@intervalzero.com
*Note: MassCore/RTX 64bit keys are linked to the system/hardware.
MassCore users can have their MassCore/RTX 64bit keys stored on a separate Dongle instead of having it linked to a unique system. Refer to the Merging option SSK-HUD-RTX.*

Refer to the Ovation v7.1 Installation Guide for more details

<http://www.merging.com/downloads>

Warning:

- Windows 7 users could see this [error](#): " Installation of KB3033929 has failed", potentially this update is already installed, proceed with YES
- Additional Online installation notes are available here:
<https://confluence.merging.com/display/PUBLICDOC/Installation+Notes+v11>

Merging Windows 10 Configuration Guide

<https://confluence.merging.com/display/PUBLICDOC/Windows+10+Configuration>

Note: At the Pyramix launch a warning message box will be displayed if your system updates settings are not configured upon Merging's recommendations.

Merging Windows 10 Spring Creator Configuration Guide

<https://confluence.merging.com/display/DSI/Windows+10+Configuration+UPDATE+for+1803>

Notes:

- *For users with Ovation, Pyramix and VCube installed on the same system, it is mandatory that you upgrade to VCube 7.1 to run alongside Ovation 7.1 and Pyramix v11.1*
- *MassCore RTX64 users upgrading their processor on a system that was running MassCore previously must follow a specific procedure, contact support@merging.com for more details.*
- *A new MTCleanUp v11 utility is available through Merging's Support for those having problems with their installation
Please refer to the Knowledge Base
<https://confluence.merging.com/display/PUBLICDOC/MT+Cleanup>*



Ovation V7.1 Features

New MassCore version as of Ovation v7.1 (as of Beta2)

- Ovation v7.1 comes with MassCore RTX64 v3.4 that is supporting Windows 10 Spring Creator (1803).
 - Refer to the Ovation v7.1 installation guide for more details.
 - For system configuration refer to the link here:
<https://confluence.merging.com/display/PUBLICDOC/Windows+10+Configuration>

Ovation 7.1 supports full Console automation, in addition to former Console Snapshot

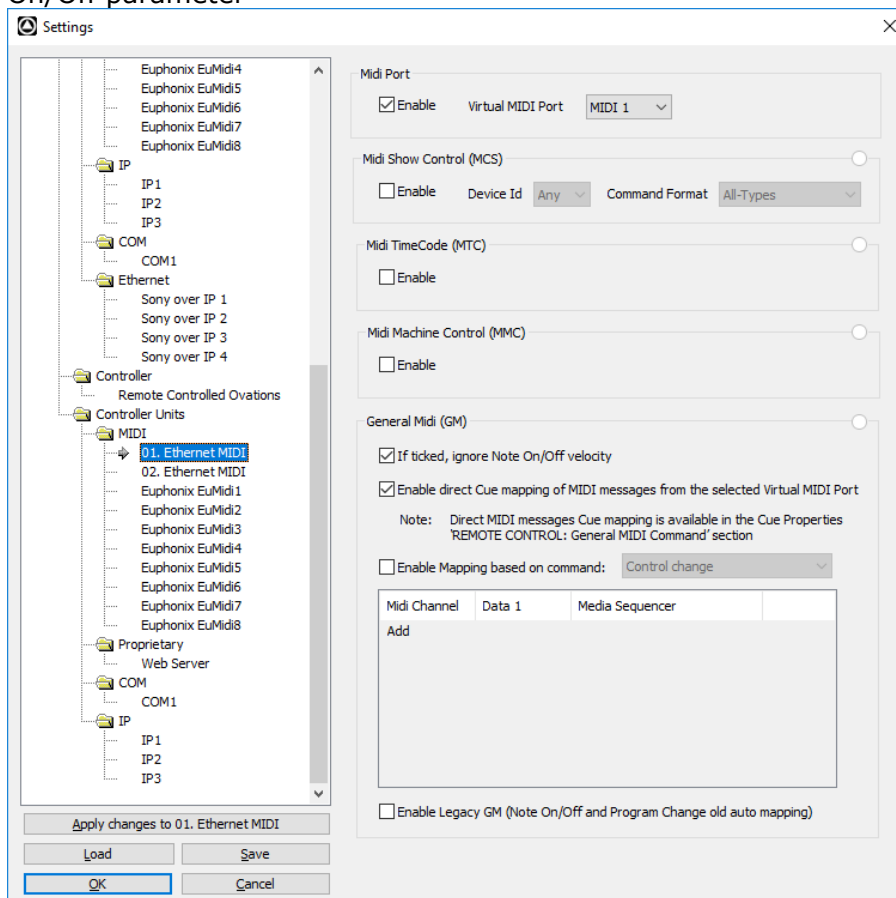
- Automation needs to be initially created in Pyramix. Simply record (and edit) some automation in Pyramix, on top of some audio clips, or without any audio on the timeline, place Mark In and Mark Out to set the beginning and end of the automation region to send to Ovation and call Project > Publish to Ovation as New Cue
- In Ovation a Cue will be created and when fired it will automate the Ovation console the same way it did in Pyramix
- The mixing console in Pyramix and Ovation don't need to be the same, however the automated elements have to be present in both cases. In case of plugins, they must be in the same order and position
- The automation must be recorded in Pyramix on the first track/first strip, however it can be multitrack
- When played back in Ovation the automation can be shifted to other strips than the first one (and followings) by using the Cue Properties > Audio > Audio Output Slot, exactly like audio cues.
- If the Pyramix timeline contained audio clips along with automation during the preparation/recording, the Ovation cue will also contain audio along with its automation.
- The components of the mixing console supported by the Ovation automation are:
 - Faders
 - Panning Control
 - VS3 plug-ins
 - VST plug-ins
- The following components are not supported by the Ovation automation:
 - General Mixing Busses controls
 - Legacy busses controls and panners
 - Masters
- A cue containing mixing console automation displays "Console Automation" in the Cue Properties > Mixer Automation > Type
 - In this case the Glide parameter by default shows "Cue Length", meaning that reducing the cue length will stop the automation earlier
 - If Glide is set to "Automation Length", the automation will keep playing even if the cue ends before the end of the automation track. In this case the automation cannot be stopped until its end

Known limitations:

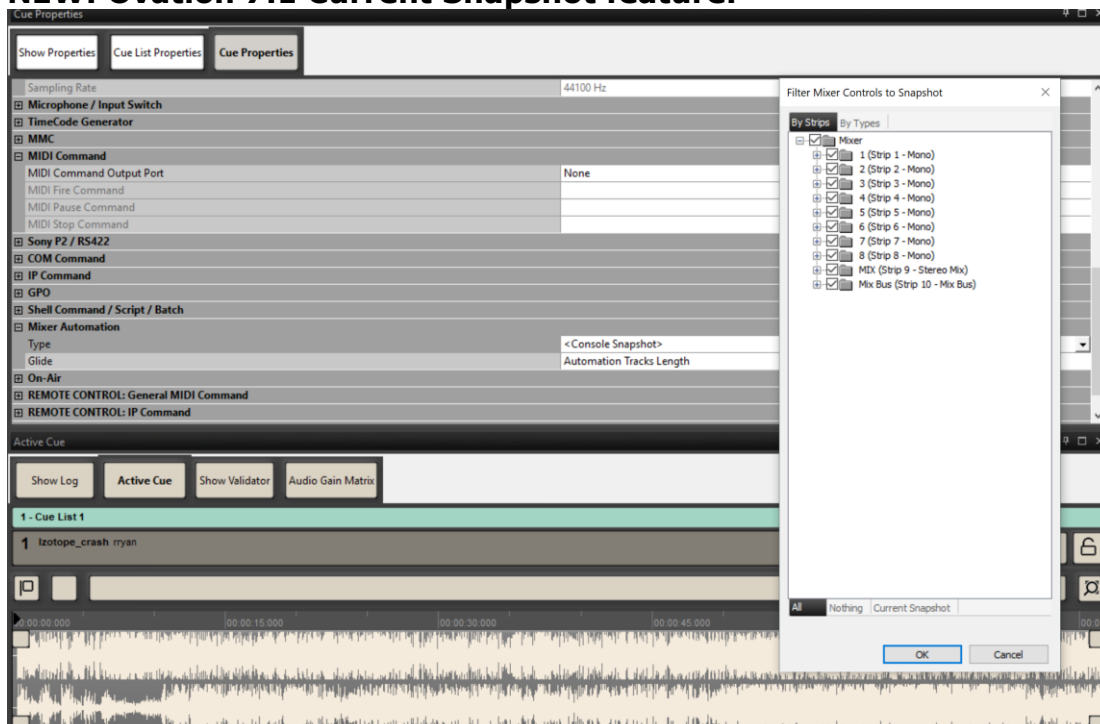
- Only one Panning Control is supported, there must be only one Panning Control in the mixing console
- Edit In Pyramix of a cue does not carry the automation back to Pyramix for editing for now
- Pausing a cue doesn't pause the automation
- Automation of Bus sends are not supported

NEW: Filtering General MIDI command option

This option is available in order to adjust the velocity of a specific MIDI channel, using the On/Off parameter



NEW: Ovation 7.1 Current Snapshot feature.



We've added the auto-selection allowing users to select the already automated items in a cue



Show management:

- Since Ovation v7.1 Shows are not compatible with Previous Ovation version we've added Save special options within the Ovation Show menu
- New Save special as version 7.0 or version3

Mixer:

NEW: Mixer, VST Hosting now supporting the VST3 plugins

Ovation v7.1 is now supporting VST3 plugins:

The VST3 plugins are known their technological advancements and creative basis. Users can now benefit from: Improved performance, Resizable edit windows (when plugin supports) and Multiple dynamic I/O's as VST3 plug-ins are no longer limited to a fixed number of inputs and outputs.

- VST3 plugins are now supported in the Mixer along with the VST2 and VS3 plugins
- The VST3 are scanned by default at the launch of Pyramix and do not require that you mount a folder in All Settings>Mixer>VST-Plugins
Note: VST3 plugins are specified to be added into the c:\Program Files\Common Files\VST3 folder, this folder being scanned at the Pyramix launch of on demand form the Pyramix Settings
- VST3 plugins are as well supported in the FX Rendering
Note: The VST3 plugins are not supported in the Render>Effects Rack
- Save Special to previous version (e.g. Save As v10.0 or v11.0) will leave the VST3 plugin within the Mixer as a ghost plugin. Those will not be accessible from previous Pyramix version despite being seen in the Mixer. Automation of VST3 will not be retrievable in Pyramix version prior to v11.1
- Implementation of a Generic Plugin UI for some of the VST and VST3 Plug-ins that are provided without a user interface

New Plugin Scanning option.

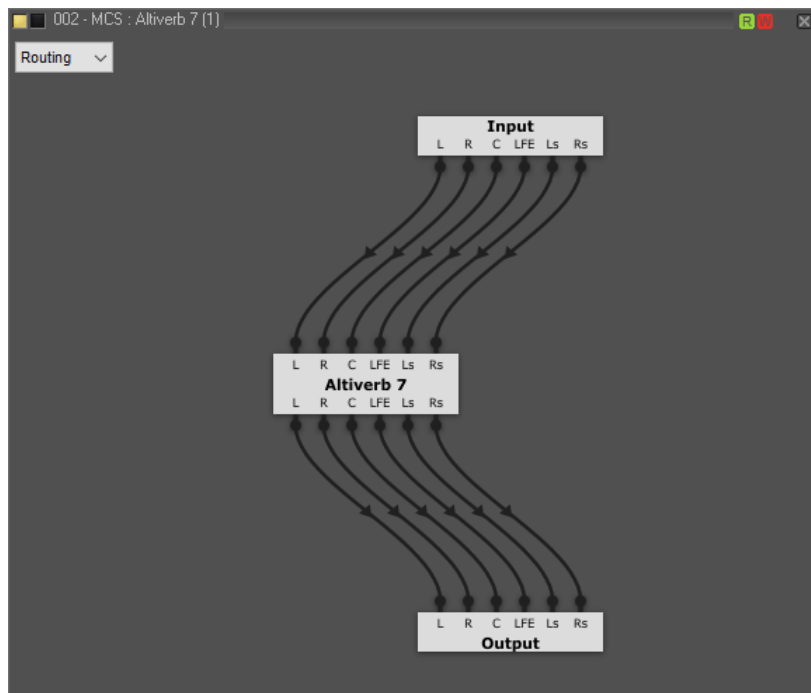
Improvements to the VST Plugins Settings page.

- From the Settings>Mixer>VST Plug-ins Settings we have added options to scan plug-in and move the "Show" button
- In order to scan plugins if those are by example installed while Pyramix is running, first open the Show dialog and then use the *Update* drop down box and select what the scan will consist of:
 - Scan VST and VST3 plug-ins
 - Scan VST plug-ins (VST = VST2)
 - Clean and scan VST plug-ins (will force the VST2 rescan)
 - Scan VST3 plug-ins
 - Clean and scan VST3 plug-ins (will force the VST3 rescan)

NEW: Mixer, VST routing view available in the Plugin user interface, allowing the user to customized their channel routing

The Option menu is now accessible from the plugin UI, in the top left region, where you can select either the Editor or Routing view

- Support for VST2 and VST3 plugins (no VS3 support)
- VST routing view available in the Plugin user interface
- Allows the user to change the automatic channel routing, by simply selecting the connection arrow and moving this one to another IO
- The Input/Output sections' channel mapping, follows the channel order of the strip/bus



Ambisonic support:

The Ambisonic support was removed from Ovation v7.1 as it is now planned for Ovation v8 Beta cycle.

Users that had created project with Ambisonic components will still be able to work on those project in Ovation v7.1 but will not be allowed to create new project with Ambisonic Strips or Buses.

Note: If you absolutely need to complete your Ambisonic project in Ovation v7.1 and cannot wait for a Ovation v8 Beta version, Merging does have an Ambisonic Registry Key that will allow you to continue working on your Ambisonic v7.1 project without the need of waiting for Ovation v8. Ask rryan@merging.com or support@merging.com for more details on this.

UDP/IP support

IP Communication has been extended to the User Datagram Protocol (UDP) support

- The IP Communication has been extended to the User Datagram Protocol (UDP) support
- The TCP/IP connections page setting in Ovation was rename to IP Connections.
- This feature adds two kinds of connection: UDP Streamer, UDP Receiver.
- The Transport column has been removed
- UDP connection have to be set with a port number. The UDP Receiver IP address should be 0.0.0.0 and the UDP Streamer IP address should be fill with the targeted IP device.

ID	Type	IP / Name	Port	Status
IP1	None	0.0.0.0	0	
IP2	None	0.0.0.0	0	
IP3	None	0.0.0.0	0	
IP4	None	0.0.0.0	0	
IP5	None	0.0.0.0	0	
IP6	None	0.0.0.0	0	
IP7	None	0.0.0.0	0	
IP8	None	0.0.0.0	0	
IP9	None	0.0.0.0	0	
IP10	None	0.0.0.0	0	
IP11	None	0.0.0.0	0	
IP12	None	0.0.0.0	0	
IP13	None	0.0.0.0	0	
IP14	None	0.0.0.0	0	
IP15	None	0.0.0.0	0	
IP16	None	0.0.0.0	0	

Remote Controller Improvements

- Buses colors and Selections improvements, affecting all controllers
- General EMC improvements
 - VPot mode navigation changed: all controllers
 - Old behaviour: Multiple VPot mode button press did nothing
 - New behaviour: Multiple VPot mode button press scroll through all function available for a VPot mode (up to 8). E.g. VPot Pan do the following: L/R > F/R > T/B > DIV > LFE > RoLR > RoFR > RoBT > L/R >...
 - Loop mode status feedback added
 - F1 to F8 key remap into the shortcut editor: Mackie, SSL, Studer
 - F1-F8 old behavior: these buttons were used to select a specific VPot sub-item (e.g. VPot set to Pan > F1=L/R, F2=F/R, F3...)
 - F1-F8 new behaviour: these buttons are used to be mapped into the Pyramix shortcut editor. The VPot sub-item selection is now done through a multiple push of the VPot mode button
 - Panning VPot display changed: all controllers
 - Mic/Pre control support: Mackie, SSL Nucleus
 - HUI controller various display timeout increased: all controllers
- SSL NUCLEUS controller support in HUI mode
 - Improvements:
 - General Control support
 - Transport Support
 - Jog/Scrub/Shuttle support
 - StripTools/BusTools plugin's control support
 - Solo/Mute/Send support
 - Horus/Hapi Mic Pre-gain support
 - Automation mode by strip support

For installation follow the procedure here:

<https://confluence.merging.com/display/PUBLICDOC/SSL+Nucleus+2+Installation+and+configuration>

For Nucleus mapping:

<https://confluence.merging.com/display/PUBLICDOC/SSL+Nucleus+2+Mapping>

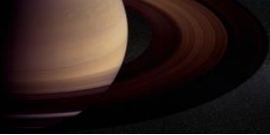
Note: Within Pyramix Settings Controller settings MIDI EMC I/O configuration make sure use the NUCLEUS in the controller "SSL NUCLEUS HUI" mode

Cues Improvements:

In the Cue List Properties, a new entry called "Ended Cue Color" was added. This option allows users to choose a color used for painting any cue in the cuelist once finished playing once and until the show is stopped.

BackUp Improvements:

Ovation now copies the currently saved version of the show in a Backup folder near the show file before replacing it. The 10 last saved versions of the show are kept in the Backup folder.



ANEMAN 1.1.1 Spring 2018:

This new ANEMAN (**A**udio **NET**work **MAN**ager) version, include the following features.

- Zone: Store and Recall configuration implementation
- Zone: Sampling Rate display
- Errors reported from devices
- Improved stability

Refer to the ANEMAN Guide for more details

Important: As of v7.1 the ANEMAN installer is no longer included in the Installer.

Please download and install the latest ANEMAN in order to manage and monitor your AoIP devices from www.aneman.net/#download



Ovation V7 Features

New MassCore (RTX64):

A new version of MassCore must be installed as of Ovation v7.1 Beta2.

- Based on RTX64-3.4
- Supporting Windows 7 - 64 bit and Windows 10 - 64bit
- Requiring a new MassCore / RTX64 - 3.0 key

Note: RTX64-3.4 now supports the Windows 10 Anniversary, Creator, Fall Creator and Spring Creator updates. Make sure you follow the Ovation v7.1 Installation guide for the exact procedure.

ANEMAN:

- ANEMAN is the RAVENNA Easy Connect replacement
- ANEMAN is the first cross platform / cross vendor **A**udio **NE**twork **MAN**ager
- ANEMAN is installed along with Ovation v7
- ANEMAN you can easily connect compatible devices, monitor the network and save/recall connection setups.
- Refer to the ANEMAN User Manual installed along Ovation for all details

Ovation V7.0 Improvements

- Ovation has now better handling of the Inputs modules listing, naming and numbering classification. Typically improved for AD modules.
- S3/S6 Controller support improvements
- The RAVENNA ASIO Driver is now supporting AES67 (48 framing), refer to the RAVENNA ASIO guide for all details

Fixed Bugs in Ovation v7.1.5 HotFix:

- OV71-24: Fixed. Ovation mixer has all faders fixed at 0dB, as if automation snapshot
- HEL-755: Fixed. Dynamics VS3 plugin sounds distorted in AES67 (48smp) mode
- PMX111-257: VST3 plug-ins with processing delay still reports latency when turned off
- Fixed. Configuration. Windows 7 wrong configuration error in regard to file location
- PMX111-193 Fixed. Enhancement: MassCore Hosts inserts should be dynamically disabled when not needed (all inserts OFF) to avoid un-necessary delay
- PMX111-240: Fixed. Mixer configure page random crash
- PMX111-252: Fixed. RAVENNA ASIO Driver not working correctly with 3rd party application
- PMX111-258: Plugin UI does not come on top of current one when click in mixer plugin
- PMX111-259: Fixed. Some VST plugins (such as Celemony Melodyne) are not connecting their routing when used in a Mono context
- PMX111-260: Fixed. Mixer: changing a channel type from the main mixer page does not notify Effects (VS3 or Native) with new layout
- PMX111-265: Fixed. Preamp mode (Mic/Line) in Pyramix opposite to what is set in Horus/Hapi settings, with RAVENNA ASIO driver only.
- PMX111-266: Fixed. Random Mixdown crash
- PMX111-267: Fixed. "Not Enough Streams available" with NAT-STD
- PMX111-275: Fixed. Automating the vst2 "La Petite Excite" plug-in causes random freeze of the User interface (freeze)
- PMX111-279: Fixed. Misleading message box
- HEL-762: Fixed. UAD VST plugins: parameters names not displayed properly - regression
- RAV-896: Fixed. ASIO 11.1 MIDI Pre backward compatible
- RAV-829: Fixed. PTP domain fixe and Glitches on all devices connected to MSC when a device starts
- Fixed: Standard Bypass parameter of a VST3 Generic Editor did not get refreshed when bypass got changed from the DAW (mixer UI) with automation Off
- Fixed. Pyramix Mixer tooltip menu opening
- Fixed. ASIO v11.1 Driver not working accurately with 3rd party DAW
- Fixed. PreAmps remote control inverted (Fixed with RAVENNA ASIO driver v11.1)
- Fixed. Folder structure menu display sorting algorithm now inspect the VST3 folder.

Fixed Bugs in V7.1.4 Release:

- PMX111-255: Fixed. Potential Crash at end of a Mixdown
- PMX111-256: Fixed. Bus Tools crash in Native with low lookahead.
- Fixed. Mixer Configure page shows Legacy bus at the lower level in a legacy sub-menu (to be consistent with the Main Mixer page)
- Fixed. Standardized Dolby Speaker set arrangements
e.g. L, R, C, Surround L, Surround R, Surround Center L, Surround Center R

Fixed Bugs in Ovation v7.1.3 RC2:

- OV71-15: Fixed. Ovation order of Cue lists saved, change at show reopening
Note this requires a special registry key and procedure in order to apply. Refer to support@merging.com if needed.
- Fixed. Implementation of Show BackUp mechanism (see Release Notes improvements)
- PMX111-256: Fixed. Bus Tools crash in Native with low lookahead.
- Fixed. Mixer Configure page shows Legacy bus at the lower level in a legacy sub-menu (to be consistent with the Main Mixer page)
- Fixed. Standardized Dolby Speaker set arrangements

e.g. L, R, C, Surround L, Surround R, Surround Center L, Surround Center R

Fixed Bugs in Ovation v7.1.3 RC1:

- OV71-15: Fixed. Custom cue list cue numbering come back after saving and opening show.
- OV71-16: Fixed. Ovation Audio Control Pane level not working on new general buses.
- OV71-18: Fixed. Ovation not backwards compatible (so preventing users to open Mixer in older version). New Save Special option was added.
- OV71-20: Fixed. Show Autostart was not working
- OV71-21: Fixed. Ovation: Pyramix automation published to Ovation, Faders not moving (potentially none of the Automation)
- PMX111-216: Fixed various VST2 and VST3 instabilities
- PMX111-227: Fixed. Automation Crash with some VST plugins and controllers (Tango)
- PMX111-228: Fixed. Automation Hang after performing Plugins automation and rebuilding the Mixer
- PMX111-233: Fixed. EQx Master Gain still applied when Bypass is engaged
- PMX111-244: Fixed. Pyramix crash when changing the strip return routing
- HEL-585: Fixed. Ovation can crash in Auto-Start mode
- HEL-617: Fixed. Altiverb XL doesn't allow multichannel in FXRendering & Mixer Routing
- ANM-307: Fixed. ANEMAN: Pressing the Pyramix shortcut icon for ANEMAN should re-open this one and not give us warning
- Fixed. Ovation Automation random crash
- Fixed. Ovation Templates are now based on New General Buses
- Fixed. MTFFF was missing from the Ovation import audio list of formats

Fixed Bugs in Ovation v7.1.2 Beta2:

- PMX110-79: Fixed. Meters send are playing incorrectly.
- PMX111-118: Fixed. Mixer: Muting Strip leaves audio leaking into the Aux Buses when send is set to PreFader
- PMX111-139: Fixed. S3-S6: using controller to solo/un-solo strips was not affecting the new Aux Group Buses Sents
- PMX111-167: Fixed. Some VS3 plugins specifically the Delay consume lots of MassCore Memory (limits its usage at high sampling rates DXD)
- PMX111-182: Fixed. Pyramix crash with controllers with VST remote control (Oasis-Tango-Eucon) and going to the Aux Groups and controlling VST plugins
- PMX111-185: Fixed. VST plugin folder listing always empty.
- PMX111-186: Fixed. user presets are now saved in a separate file
- PMX111-194: Fixed. Some VST plugins (Altiverb) are causing Ovation to crash or hang at project opening
- PMX111-202: Fixed. Surround Meter plugin can cause a crash at Project opening (Native)
- PMX111-219: Fixed. Ambisonic: Strangeness with Strip to Ambisonic levels
- HEL-509: Fixed. Remote Controllers. Buses colors and Selection are not applied
- HEL-510: Fixed. Remote Controllers. EQX filter order on S3 not correct
- HEL-591: Fixed. Video thumbnails not playback accurate after seeking (part II)
- HEL-680: Fixed. EuCon Bypass not working with some VS3 plugins
- HEL-695: Fixed. Ovation crash and show gets corrupted when saving with Mixer remote enabled
- HEL-697: Fixed. 'Publish to Ovation as New Cue' without clips on the first track of the timeline do not display correctly
- OV71-3: Fixed. Pyramix edits sent to Ovation were wrong if audio missing on tracks
- RAV-816: Fixed. ASIO status must not be reported as an error but as a status
- ANM-258: Fixed, ANEMAN Matrix fixes and cookie remembers last tab / matrix selection
- ANM-296: Fixed. ANEMAN small enhancements (Zone and reported Sampling rate)
- ANM-297: Fixed. ANEMAN: Horus or Hapi ejected from world view zone at times (when opening the web access)
- ANM-298: Fixed. ANEMAN: Error from Horus not reported in ANEMAN properly

- ANM-300: Fixed. ANEMAN: Not always showing devices with IO connectivity (Hapi/Horus)
- Fixed. Multiple Objects over multiple Object Bus issue
- Fixed. MassCore can now be uninstalled even if you have no MassCore key loaded

Fixed Bugs in Ovation v7.1.1 Beta1:

- HEL-502: Fixed. Ovation default mixing console now created with new General Mixing Bus
- HEL-512: Fixed. VS3 Playback Engine Memory size
- PMX111-142: Fixed. New General Buses missing "apply all strip input gains to send gains" option
- Fixed. Nucleus Controller improvements, also impacting other HUI controllers

Fixed Bugs in Ovation v7.0.6 HotFix:

- PMX110-123: Fixed. New MassCore version (RTX64 v3.3) supporting Windows 10 Fall Creator Update (1709) and the Meltdown and Spectre Windows updates.
- HEL-529: Fixed. Surround Channel options choices in Mixer and Configure Page
- HEL-557: Fixed. Crash when removing strip or bus if Meter Bridge is enabled
- HEL-618: Fixed. Avoid duplicated names in some case for VST plugins such as b<>.com
- GAIA-543/1160/955: Fixed. Hovering over file path should show the entire path name in all windows

Fixed Bugs in Ovation v7.0.5 HotFix:

- OV70-4: Fixed. Ovation might not exit properly and leave an Ovation.exe running in background
- OV70-5: Fixed. Midi controller now authorized with Ovation Silver
- ANEMAN: Fixed. Various improvements

Fixed Bugs in Ovation v7.0.4:

- ANM-209: Fixed. ANEMAN Plug-in Manager bug fixes and version identification

Fixed Bugs in Ovation v7.0 RC1:

- PMX110-78: Fixed. Add Strip MCS 4.0 Quadro (L-R-Ls-Rs) -> 3.1 Surround (L-R-Cs-Lfe)
- PMX110-149: Fixed. Some Channels mappings choices do not create the correct number of channels
- PMX110-155: New MassCore update to RTX64 – 3.2

Bugs fixed in Ovation v7.0 beta2

- PMX110-109: Fixed. Ovation: Consolidate sampling rate not applied imported media from server
- PMX110-74: Fixed. MassCore AES67 BusTools EQ crashes
- PMX110-103: Fixed. Better handling of the Inputs modules listing, naming and numbering classification
- PMX110-122: Fixed. Crash when transport machine object was allocated on high 64-bit address
- PMX110-132: Fixed. SACD render mode can crash at render start

- PMX110-134: Fixed. Crash AMR when having both Hepta SRC and Resampler in the processors stack
- PMX110-138: Fixed. MTOASIS_MACKIE_M.xml error when adding MACKIE HUI controller.
- PMX110-146: Fixed. Opening or closing templates on v11 can cause a crash
- PMX110-152: Fixed. Auto stop SuperFetch Windows service for performance purpose at VS3 start. (MassCore and Native)
- GAIA-188: Fixed. ANEMAN and Easy Connect not allowed to run simultaneously, warning added.
- GAIA-1434: Fixed. Pyramix v10.2 Apple MIDI Session Port 0 instead of default 5004
- HEL-376: Fixed. Album publishing process freeze if output media file pathnames length exceed 260 characters
- HEL-354: Fixed. DC Meter VS3 makes Pyramix hang
- RAV-758: Fixed. RAVENNA ASIO driver issue creating buffer at > 1 FS

ANEMAN Bug Fixed:

- ANM-197: Fixed. ANEMAN Crash when changing sampling rate Horus Master
- ANM-198: Fixed. LTC & Video Ref connections status with proper coloring
- ANM-199: Fixed. LTC out matrix, need to click on the edge of matrix square to connect
- ANM-202: Fixed. New zones overlapping previous ones
- ANM-203: Fixed. Adding a System on the network not always discovered by ANEMAN
- ANM-206: Fixed. ANEMAN not always creating its "aneman" folder under Roaming (missing groups.json)
- ANM-207: Fixed. ANEMAN proxy discovery improvement
- ANM-218: Fixed. Auto expand on click to allow connection if one IO side is collapsed
- ANM-220: Fixed. Do not show connection of deactivated IOs in world view
- ANM-222: Fixed. ANEMAN slowdown and random crash
- ANM-223: Fixed. Devices not recognized depending on the Subnet Mask

Bugs fixed in Ovation v7.0 beta1

S3/S6 Controller support improvements:

- PMX110-7: Fixed. Automation mode (fader strip) (Latch - Trim Touch - Trim Latch not accessible)
- PMX110-8: Fixed. Custom track color now supported
- PMX110-11 Fixed. Bus names not always displayed correctly in EuControl shortcut (S3) page and properly reported on controller (S3-S6)
- HEL-270: Fixed. EQ-X and Parametric EX do not show the Q factor control

Technical Notes & Known Issues

Merging online knowledge database for updates on the known issues

<https://confluence.merging.com/display/PUBLICDOC/Known+Issues>

General

- Ovation keyboard users should update the Keyboard driver and "changeme" software in order to prevent a potential freeze under 64bit of Ovation/Pyramix. Please follow instructions for the Ovation keyboard use.
<https://confluence.merging.com/display/PUBLICDOC/Pyramix+ADR+and+Ovation+keyboard+install+guide>
- Cue not starting up at times. Please make sure that your Media files are at the same sampling rate as your project. We recommend user to have their media files at the same sampling rate as their show.
- When running an Ovation show with timed cue lists for more than 24 hours, it must be noted that any timed cue lists which are manually started (not chasing show time, but manually fired using the header in the timed cue list) will not behave properly. This is due to running multiples of a 24 hour clock. Using timed cue lists in every other fashion will work as normal in multiple day Ovation shows.
- The SeaLevel GPIO's are no longer installed with the Pyramix software. Please refer to the page here for installations:
<https://confluence.merging.com/pages/viewpage.action?pageId=15139174>

MassCore

- MassCore not supported on Core2Duo. Minimum requirement is a QuadCore.
- MassCore is supported under Windows 7 (64bit) and Windows 10 (64bit)
- Ovation v7.1 comes with a new MassCore (RTX64 -3.4) version that requires the 3.0 key

Technical Notes:

- MassCore not supported on Core2Duo since Ovation v4. Minimum requirement is a QuadCore.
- MassCore is supported under Windows 7 (64bit) and Windows 10 (64bit) with Ovation v7
- MassCore as of Ovation v7.1 requires the same RTX64 3.0 Key as Ovation v7.0
- Ovation v7 system recommendations. Details here: <http://www.merging.com/pages/pconfig>
- MassCore 64bit: Activation key is linked to the system and not the dongle) and can only be activated once on a dedicated system. This only applies to 64bit. If you need to re-install MassCore/RTX64 bit on another system using the same key this will not be possible if the key has already been used. For such RTX64 Activation Key Replacement the demand can be made at keys@merging.com or in case of weekend emergency through the Interval Zero Support team [IntervalZero Support site](#) This means that if you already have install MassCore 64bit on system and want to move it to another system you must contact interval zero and RTX64 so that they re-issue the key.
- In order to run MassCore 64bit users will need to have both the RTX64bit Activation key and the MassCore 64-bit key.
- MassCore Ultra Low latency mode can generate noise if used on some configuration (not optimal/Turnkey recommended). In such case we rather recommend to use the AES67 mode or the Extra Low latency mode.
- Merging does not recommend the use Disk models: Green, Eco series and Seagate.
- Merging recommend users with External USB disk to have those disks configured to "Better Performance" under Windows disk properties, profiling option.
- The Network must be Layer 3 compliant and must be a Gigabit network
- Merging has certified the Network Switch for use with Horus/Hapi – Ravenna find details and configuration file here: <http://www.merging.com/products/horus/downloads>
- RAVENNA user should avoid connecting multiple Horus to any a router/Network not certified by Merging. Refer to the Merging RAVENNA Network Guide for all details on the certified RAVENNA switch and configuration.
<https://confluence.merging.com/display/PUBLICDOC/Network+Switches+for+RAVENNA+-+AES67>
<http://www.merging.com/products/horus/downloads>
- Only RAVENNA devices can be connected to the Merging PCIe Ethernet Controller Card NET-MS-GBEX1. Avoid mixing up non-RAVENNA device on this network, like Controllers such as Tango/Isis/Euphonix or other network devices. The same will apply if you are connected to a Merging certified switch for RAVENNA use

- Don't connect a 100MB Ethernet device if the switch is not multicast; otherwise the flow control will reduce drastically the bandwidth.
- A RAVENNA ASIO driver is available for Horus/Hapi users that wish to use their notebook GbE Network RJ-45 system socket. Refer to <http://www.merging.com/products/horus/downloads>

Known issues:

- Listing of Ovation supported remote controller [here](#)
- Horus/Hapi Ravenna: Switching from MADi Standard (56) to MADi Extended (64) can generate small glitch, avoid doing so during realtime operations
- Merging recommends the use of ANEMAN in order to manage all RAVENNA I/O connections, please refer to the ANEMAN User Manual installed along with Pyramix for more details.
- Non-certified Ravenna configurations might not capable of sustaining 384 I/O @ 1FS (44.1/48 kHz). If you experience noise similar to static reduce the Ravenna I/O count enabled in ANEMAN
- Merging recommends that Ravenna users disable the Windows Firewall, as it can partially block some of the Ravenna I/O connections
- Peaks might show up under Pyramix Core section if you power OFF or disconnect the Horus/Hapi. Recommendation: A valid connection an online Horus is always required if the Horus/Hapi is PTP Master. Reset peaks by Mouse Clicking on the Core section.
- Avoid changing a network address on your system or disconnecting Ethernet ports on your system when MassCore Ravenna is running
Refer to the Easy Connect troubleshooting for more information
<https://confluence.merging.com/display/PUBLICDOC/RAVENNA+EasyConnect+Troubleshooting>
- Cannot use the ISIS since running Ravenna with the Merging PCIe Ethernet Controller Card NET-MS-GBEX1
Recommendation: Refer to the ISIS support document below
http://download.merging.com/beta/SupportTools/Docs/ISIS_Vista_or_7_dedicated_lan.pdf

Connections:

In order to create RAVENNA I/O connections please refer to the ANEMAN guide or the RAVENNA Easy Connect guide (installed along with Ovation)

Windows Firewall:

The Windows Firewall can block communication between MassCore and Horus. We recommend users to disable the Public Network Firewall

Procedure:

1. Go in Windows Control Panel > Windows Firewall.
2. Click on "Turn Windows Firewall on or off"
3. Go to the Public Network section and select "Turn Off Windows Firewall"

Windows UAC:

User should disabled the Windows User Account Control

Procedure:

1. Go in Windows Control Panel\All Control Panel Items\User Accounts
2. Open the Change User Account Setting
3. And set it to never notify

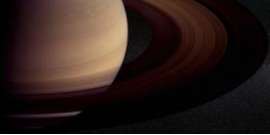
Disable Antivirus:

Some Antivirus as Avast or Sophos have been known to block the Horus discovery and RAVENNA I/O Connections. Merging also recommends that any Antivirus software is properly configured to not interfere with the DAW. See this page for further details:

<https://confluence.merging.com/display/PUBLICDOC/Antivirus+and+Merging+Technologies+Softwares>

Ovation Native Recommendations:

- Windows 7 (64bit) and Windows 10 (64bit) supported with Ovation v7 Native
- RAVENNA ASIO users should have administrator rights
- Disable the WIFI (disable the Wireless adaptor not only the WIFI connection)
- Disable Bluetooth if active (under Windows Device Manager)
- Make sure you select the "High Performance" power plan (very common that Powerful laptop are at times in energy saving mode, create a High-Performance power plan)
- Avoid using battery power, rather have you power cable connected
- Set all your Antivirus to off
- Disable the Windows Public Firewall
- Put Windows UAC (User Account Control) to the lowest level (disabled)
- Set Windows Automatic-Update to "notify me"

- 
- Avoid active internet connection while running Ovation
 - Verify the performance of your Native system by running the DPC Latency checker:
http://www.thesycon.de/deu/latency_check.shtml
 - Refer to the online documentation for all details
<https://confluence.merging.com/display/PUBLICDOC/Native+recommendations>