

MERGING ANUBIS

Eventide® BLACKHOLE

optional plugin



User Guide

EVENTIDE BLACKHOLE

Eventide and Blackhole are registered trademarks of Eventide Inc.

Introduction:

Add-on optional Anubis plugin The Eventide® Blackhole is a classic Eventide reverb effect capable of producing huge spaces and out-of-this-world soundscapes.

Most reverbs are earth-bound and constrained by the physics of the real world. The Eventide Blackhole® reverb breaks the rules by allowing you to create virtual spaces that could never exist in reality (or at least the one we inhabit). At large sizes, its soft attack and lingering, harmonic tails allow it to really shine on guitars, strings, and pads. At small sizes, those very same qualities can add an angelic sheen to vocals or turn a simple drum track into an otherworldly rhythm section.

The Blackhole user interface is designed with an emphasis on user control and playability. Specifically, the knobs are easily adjusted with an up-and-down motion of the finger, and all controls produce a smooth change in the audio, allowing you to glitchlessly shape the effect.

The Eventide Blackhole is available in the ultra-low latency Mixer of Anubis and ideal for guitar player, vocals and live.

Optional Plugin:

The Eventide Blackhole comes as an option that can be purchased from the Merging Online Store.

At purchased a key will be issued, the user must then open the Merging License Manager from either: MAD, VAD ANEMAN or MT Discovery and enter their Blackhole keycode to activate the plugin in the Music Mission.

Note: The Eventide Blackhole requires Firmware 1.4.6 and above with a purchased license.

Activation:

Once having purchased the Eventide Blackhole you will receive an activation code in your emails. Follow the Merging License Manager (MLM) guidelines in order to activate your plugin.

<https://confluence.merging.com/pages/viewpage.action?pageId=97747559>

Once activated the Eventide Blackhole will be available from the Music Mission channel strips as an additional plugin

Type Selection

To select the Eventide Blackhole, open the Reverb (Edit Rev) and under the Type option select the Eventide Blackhole entry.

Note that you can use either the MERGING+REVERB or the Eventide Blackhole.



BLACKHOLE PARAMETERS

Mix

Determines the relative level of the wet and dry signals.

Gravity

The Blackhole's equivalent of decay time. On the right-hand side, the Gravity control sweeps through its forward reverb range from a very dense decay to a very long and smooth decay. On the left hand side, the Gravity control is in its inverse mode and sweeps through a range of reverse reverb-like settings.

Size

Determines the size of the reverb. This can range from cartoonishly small to cosmically epic.

Pre Delay

Sets the amount of delay before the reverb section. When Tempo Sync is off, this ranges from 0 to 100 (2000 mS).

Low

Controls the level of low frequencies in the reverb tail using a shelving filter with a corner frequency of 350 Hz.

High

Controls the level of high frequencies in the reverb tail using a shelving filter with a corner frequency of 2000 Hz.

Mod Depth

Sets the modulation depth in the reverb tail. This can be a subtle control, which nevertheless can reduce ringing in the reverb tail and add some motion to the sound.

Mod Rate

Sets the relative speed of the modulation in the reverb tail. Subtle but useful.

Feedback

Controls the feedback around the entire reverberation structure, for even larger sounds. Turning clockwise to Infinite will allow for infinite reverberation time, while still letting incoming signal into the reverberation structure.

Note: Infinite freeze is not available on the Merging Blackhole version.

Resonance

Controls the resonance of the Low and High filters. When the filters are set to 0, this does nothing, but when they are active, it can create a much more filtered sound. But be careful, extreme settings will increase the chances of overloads.

N.B. that either Mod Depth or Mod Rate must be turned down to 0 in order for infinite reverberation time to be achieved.

SNAPSHOTS

18 snapshots are available for the Eventide Blackhole, with 6 of those being factory snapshots. Save and recall your Anubis Eventide Blackhole snapshots or exchange them with other users.



6 Factory Presets

1: Default:

Dark typical Reverb preset with short resonance

2: Blackhole:

Eventide Blackhole default preset

3: Break on through:

Dark large size Reverb with medium length tail for vocals or guitars

4: Short Duck:

Short size Reverb

5. Cathedral:

Highly diffuse and large reverberation and feedback

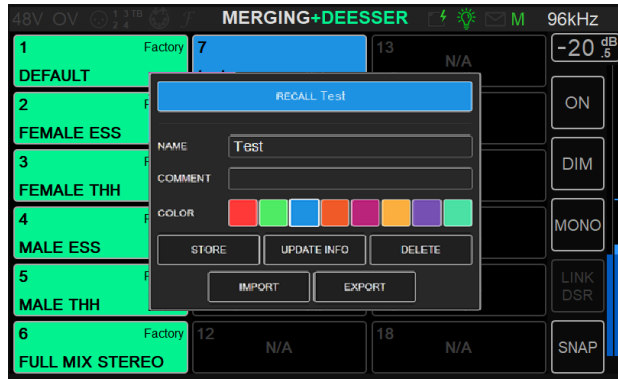
5. Pulsar:

Reverb with modulation and delay

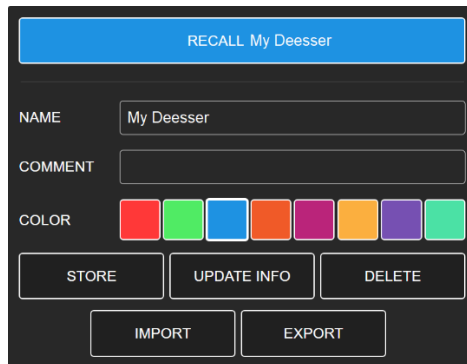
Import and Export of Snapshots

(as of firmware 1.4.3 and above)

Users can Import or Export individual Snapshots locally on their system to re-import to another Anubis or to share with other users this applies to effects as well: EQ, Dynamics, Reverb, Deesser, Blackhole plugins.



When opening a Snapshot with your browser, you will notice an Import and Export buttons allowing the user to name their preset and export them to the connected system. Those can later on be re-imported from this Anubis or from another Anubis.



The file extension of the snapshots is .mumi and will be preceded by the Name, the Effect Type and the Position. e.g. **My_Deesser**_Deesser_7.MuMi

Conclusion

We hope you enjoy the Blackhole plug-in and put it to good use in all of your mixes. Please be sure to check over Merging Plug-In offerings for more unique and interesting effects.